

SOLD



Green Island, 286 Main South Road

Level & Affordable 459sqm Section

This is a great location to build a new home and raise a family, Green Island has it all - the popular kindergarten and primary school, supermarket, gym, numerous cafes and sports clubs - yet you're only minutes from the Dunedin CBD. If you have always wanted to build, or relocate a dwelling, you will consider this an astute purchase and investment. Don't delay, secure this 459m² (more or less) section and you can start planning your new home straight away!



LAND 459 m²

For Sale
Negotiation

Contact
Jason Hynes
021 225 5527
Jason@ljhdunedin.co.nz

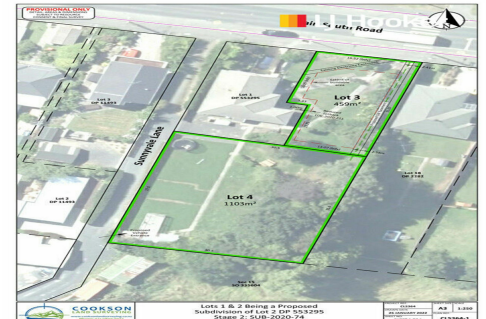
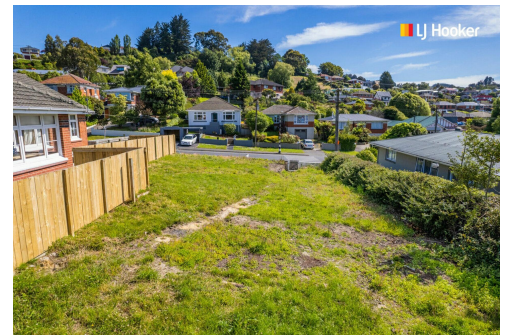
Lawrence Schaumann
027 418 6204
lawrence@ljhdunedin.co.nz

More About this Property

Property ID	3MUPGDS
Property Type	Residential
Land Area	459 m²
Licensed Real Estate Agents (REAA2008)	

Jason Hynes 021 225 5527
Managing Director / Licensee / Auctioneer | Jason@ljhdunedin.co.nz
Lawrence Schaumann 027 418 6204
Licensee | lawrence@ljhdunedin.co.nz

LJ Hooker Dunedin (03) 470 1370
Wayne Graham Realty Ltd
63 Musselburgh Rise, DUNEDIN 9013
dunedin.ljhooker.co.nz | dunedin@ljhdunedin.co.nz



Disclaimer: All information contained therein is gathered from relevant third parties sources. We cannot guarantee or give any warranty about the information provided. Interested parties must rely solely on their own enquiries.

LJ Hooker Dunedin
(03) 470 1370
Wayne Graham Realty Ltd