



Geilston Bay, 20 Lowlynn Court

Geilston Bay - An Affordable Option for Home Builders



LAND 588 m²

For Sale

Offers Over \$175,000

Contact

Ant Manton

0408 621 856

antmanton@ljhookerpinnacle.com

Zac Flanagan

0466 685 937

zflanagan@ljhookerpinnacle.com

Ant's "Fluff-Free" Description...

* High-Demand Hotspot: Nestled in the always-popular Geilston Bay, this location is as sought-after as the last slice of pizza at a party.

* Build or Invest: Whether you're dreaming of a new home or looking to make a smart investment, this block offers a golden opportunity to make your plans a reality.

* Peaceful Cul-de-Sac: Tucked away in a quiet cul-de-sac, you'll enjoy the kind of peace and tranquility that even your meditation app can't compete with.

* Gentle Slope, Great Views: The gently sloping allotment is perfectly elevated to give you sweeping urban views without making your driveway a nightmare.



Disclaimer: All information contained therein is gathered from relevant third parties sources.

We cannot guarantee or give any warranty about the information provided. Interested parties must rely solely on their own enquiries.

LJ Hooker Pinnacle Property Rentals
(03) 6272 8177

* **Sleek Subdivision:** Join a fresh, modern community where every house is new and shiny - just like that car you've been eyeing.

* **Prime Proximity:** Just under 15 minutes to Hobart's CBD. Close enough for convenience, but far enough that you won't have to deal with city traffic - win-win!

* **Local Conveniences:** Minutes away from shops, schools, and recreation facilities. Everything you need is basically on your doorstep, so you can focus on the important things, like what's for dinner.

* **Lindisfarne Village Vibes:** The bustling Lindisfarne Village is just a short drive away. Whether it's brunch, shopping, or a cheeky after-work drink, you're covered.

* **Ready to Go:** With titles already issued and house plans available, this land is primed and ready for you to start building. Oh, and did we mention the soil test is done too? All this at an amazing price - you'd be crazy to pass it up!

* **Lifestyle Upgrade:** Close to schools, the yacht club, and the Derwent River, this location offers a lifestyle that's as active or laid-back as you want it to be.

* **Convenience is King:** A quick drive will get you to shops, parks, restaurants, and schools. So, you can spend less time on the road and more time enjoying your new home.

Onwards and upwards to your Geilston Bay beauty!

"I Work Harder - It's THAT Simple!"

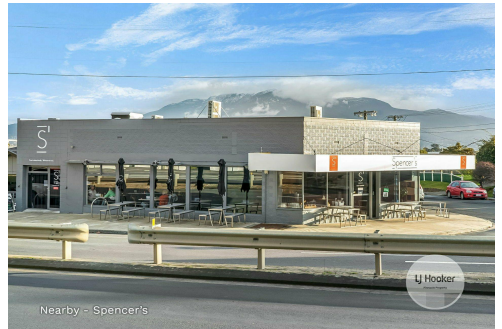
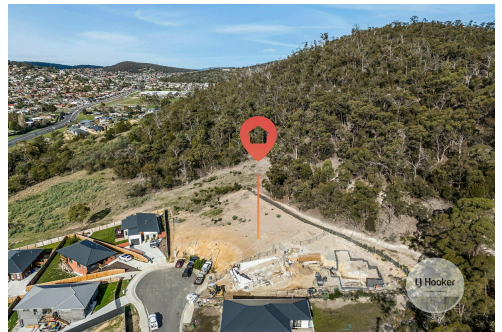
Disclaimer: The information contained herein has been supplied to us and we have no reason to doubt its accuracy, however, cannot guarantee it. Accordingly, all interested parties should make their own enquiries to verify this information.

More About this Property

Property ID	5WPVFCS
Property Type	Residential
Land Area	588 m2

Ant Manton 0408 621 856
Real Estate Agent | antmanton@ljhookerpinnacle.com
Zac Flanagan 0466 685 937
Operations Manager to Ant Manton | zflanagan@ljhookerpinnacle.com

LJ Hooker Pinnacle Property Rentals (03) 6272 8177
122 Murray Street, HOBART TAS 7000
pinnacleproperty.ljhooker.com.au | hello@ljhookerpinnacle.com



Disclaimer: All information contained therein is gathered from relevant third parties sources. We cannot guarantee or give any warranty about the information provided. Interested parties must rely solely on their own enquiries.

LJ Hooker Pinnacle Property Rentals
(03) 6272 8177