

Austral

RISE

Residential Estate



Austral, 40 Eleventh Avenue

Build Your Dream Home | Walking Distance To All Amenities

Be apart of Austral Rise Estate today, cleared and ready to build your dream home today. Premium residential land in one of Austral's most sought-after locations. With prices starting from just \$605,000.

Enjoy comfort and convenience with this tranquil suburban lifestyle with easy access to essential amenities, schools, parks, and transport links.

Whether you're envisioning a spacious family home or an investment opportunity, this is the location for you. With registration imminent, Stage 1 is now registered, and Stage 2 is expected to register in February 2025.

Lot sizes range from 250sqm - 294sqm



Disclaimer: All information contained therein is gathered from relevant third parties sources. We cannot guarantee or give any warranty about the information provided. Interested parties must rely solely on their own enquiries.



LAND 250 m2

For Sale
From \$599,000

Contact
Anthony Bucca
0418 972 882
abucca.leppington@ljhooker.com.au
Samuel Moscabenny
smoscabenny.leppington@ljhooker.com.au

LJ Hooker Leppington | Austral
(02) 9606 4311

Close proximity to everything you need and more including:

St Anthony of Padua College, Austral Shopping Centre, Austral Public School, Leppington Train Station, Leppington Village Shopping Centre, M7 Interchange and a short distance to Western Sydney International Airport.

Contact us today to secure your pick today

Disclaimer: The above information has been furnished to LJ Hooker Leppington | Austral by the vendor/vendors legal representative. We have not verified whether or not that information is accurate, and do not have any belief one way or the other in its accuracy. LJ Hooker Leppington | Austral do not accept any responsibility to any person for its accuracy and do no more than pass it on. All interested parties should make and rely upon their own enquiries in order to determine whether or not this information is, in fact, accurate.

More About this Property

Property ID	11BYHCV
Property Type	Residential
Land Area	250 m2

Anthony Bucca 0418 972 882

Sales Manager | abucca.leppington@ljhooker.com.au

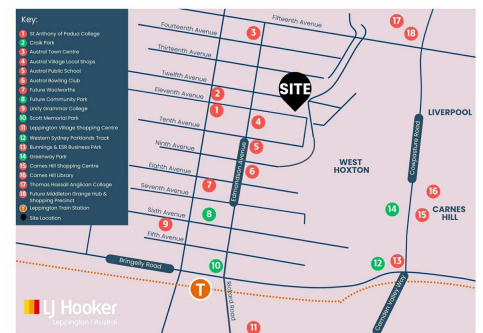
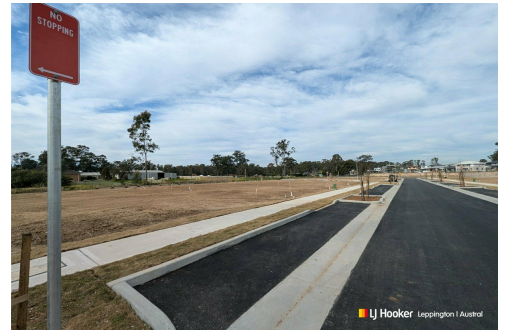
Samuel Moscabenny

Licensed Sales Agent | smoscabenny.leppington@ljhooker.com.au

LJ Hooker Leppington | Austral (02) 9606 4311

Leppington Village Shopping Centre, Shop GC1, 108-116 Ingleburn Road,
LEPPINGTON NSW 2179

leppington.ljhooker.com.au | leppington@ljhooker.com.au



Disclaimer: All information contained therein is gathered from relevant third parties sources. We cannot guarantee or give any warranty about the information provided. Interested parties must rely solely on their own enquiries.

LJ Hooker Leppington | Austral
(02) 9606 4311