



Thornton, 7 Woodford Place

Awesome Commercial/Industrial Offering For Sale Or Lease!

With size, style and sizzle and app 600sqm of floorspace, this outstanding opportunity is ready for its first tenant or new owner, brining with them their fighting spirit to set themselves in place for the future!

This exceptional offering has secure lockable storage on the RHS of the site, and internally there is a standout open plan space in addition to the upstairs viewing platform (mezzanine) recently completed in glass balustrading with stunning matching staircase.

A downstairs office, kitchen and amenities complete the ground floor with potential to adapt your floorplan as you see fit.

Key Features:



Disclaimer: All information contained therein is gathered from relevant third parties sources. We cannot guarantee or give any warranty about the information provided. Interested parties must rely solely on their own enquiries.

For Sale
Contact Agent

Building Area
600sqm

Contact
Todd Fisher
0438 592 920
tfisher.maitland@ljhooker.com.au

LJ Hooker Maitland
(02) 4933 5511

- 1,500sqm site, with approximately 450sqm underroof space plus a lockable storage area of 150sqm*
- Large oversized hardstand for multiple vehicles
- High clearance for versatile usage
- Secure Cul de sac location
- Dual roller doors for easy access and logistics
- Modern amenities for convenience
- Quality lighting throughout
- Secure fencing for added security

E3 Productivity Support Zoning allows for the following;

To provide a range of facilities and services, light industries, warehouses and offices.

- * To provide for land uses that are compatible with, but do not compete with, land uses in surrounding local and commercial centres.
- * To maintain the economic viability of local and commercial centres by limiting certain retail and commercial activity.
- * To provide for land uses that meet the needs of the community, businesses and industries but that are not suited to locations in other employment zones.
- * To provide opportunities for new and emerging light industries.
- * To enable other land uses that provide facilities and services to meet the day to day needs of workers, to sell goods of a large size, weight or quantity or to sell goods manufactured on-site.

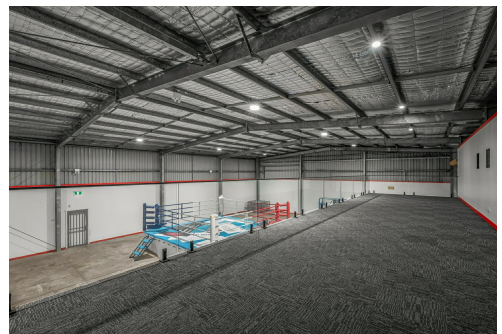
This is a rare opportunity to secure a rejuvenated, high-exposure commercial space in a thriving business hub! Don't get beat to the punch... hit the enquire now button & book your inspection to view your future today!

More About this Property

Property ID	1DZTF6H
Property Type	Industrial/Warehouse
Building Area	600 m²
Land Area	1500 m²

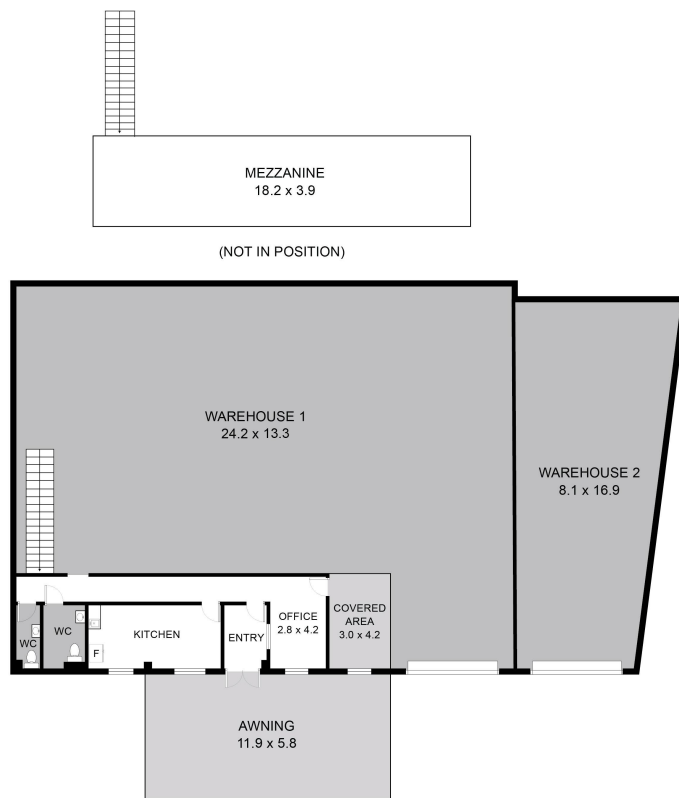
Todd Fisher 0438 592 920
Principal/Licensee in Charge | tfisher.maitland@ljhooker.com.au

LJ Hooker Maitland (02) 4933 5511
24 Ken Tubman Drive, MAITLAND NSW 2320
maitland.ljhooker.com.au | maitland@ljhooker.com.au

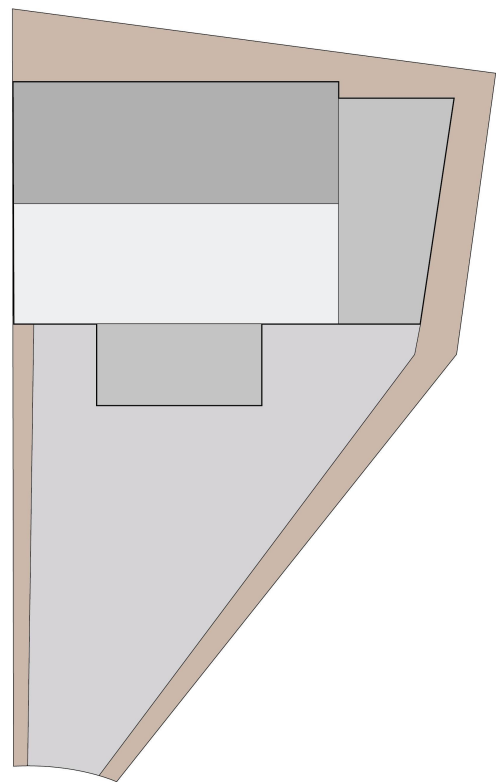


Disclaimer: All information contained therein is gathered from relevant third parties sources. We cannot guarantee or give any warranty about the information provided. Interested parties must rely solely on their own enquiries.

LJ Hooker Maitland
(02) 4933 5511



FLOOR PLAN



SITE PLAN



7 Woodford Place
Thornton

DISCLAIMER: Plans shown are for presentation purposes only and not part of any legal document or title.
They are subject to errors, omissions, inaccuracies and should not be used as a sole and accurate reference.
Interested parties should make their own inquiries using independent sources.
Measurements rounded off to closest 100mm.

 **LJ Hooker**
Maitland

 **LJ Hooker**

LJ Hooker Maitland
(02) 4933 5511

Disclaimer: All information contained therein is gathered from relevant third parties sources.
We cannot guarantee or give any warranty about the information provided. Interested parties must rely solely on their own enquiries.