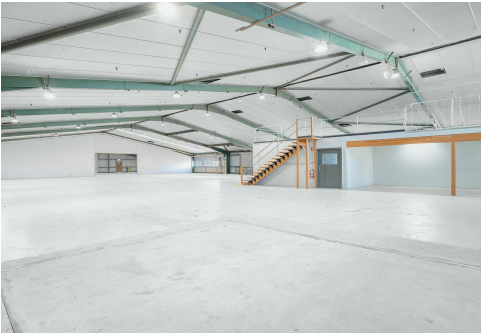




3 Elizabeth Avenue



Taree, 3 Elizabeth Avenue

Now This Is A Shed!

Approx 3,600 m2 of renovated floor space conveniently located within 1km to Taree's CBD. Originally used as the old Bonds Clothing Factory, this quality building has recently undergone major refurbishment by the owner bringing the property up to today's standards and compliancy levels.

Amenities include multiple toilets and showers and kitchen facilities. Office areas are ducted ready for air conditioning and varied in size suitable for larger meeting/training rooms and/or display areas. With strong visual presence from Whitbread Street this property includes 23 car spaces and truck access to loading bays at the rear.

Currently tenanted for \$460,000 net rent per annum.

Zoned: E3 Productivity Support

Land Size: 6,768 m2 approx.

For Sale
\$4,500,000

Building Area
3,600sqm

Contact
Amanda Tate
0427 539 991
atate@ljhtaree.com.au



LJ Hooker Taree
(02) 6552 1133

Disclaimer: All information contained therein is gathered from relevant third parties sources. We cannot guarantee or give any warranty about the information provided. Interested parties must rely solely on their own enquiries.

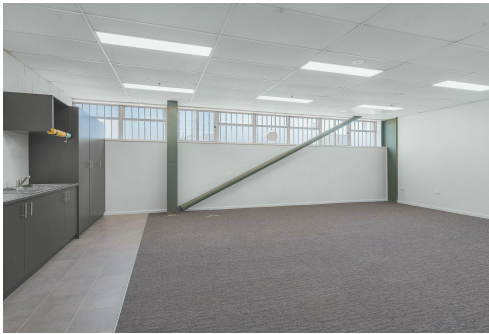
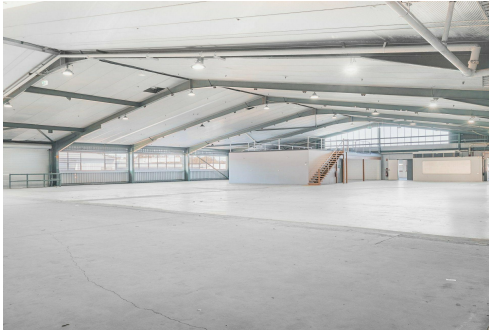
Contact Amanda Tate on 0427 539 991 for further information or to arrange an inspection.

More About this Property

Property ID	1REFF7G
Property Type	Industrial/Warehouse
Building Area	3600 m2
Land Area	6765 m2

Amanda Tate 0427 539 991
Managing Director & Licensee in Charge | atate@ljhtaree.com.au

LJ Hooker Taree (02) 6552 1133
227 Victoria Street, TAREE NSW 2430
taree.ljhooker.com.au | taree@ljhtaree.com.au



Disclaimer: All information contained therein is gathered from relevant third parties sources.
We cannot guarantee or give any warranty about the information provided. Interested parties must rely solely on their own enquiries.

LJ Hooker Taree
(02) 6552 1133