



11 Ellsmere Avenue, Singleton

McDougall Industrial Estate - Units for Lease

- Storage space
- Workshop
- Suitable for many uses
- Brand new premises, located in a quiet cul de sac
- Ideal for small business, the hobbyist, tradesperson or the home owner looking for space for the caravan, boat or extra cars
- Units 1 & 7, ground floor 139.8 sqm + mezzanine 36 sqm
- Units 2 & 3 - 69.6 sqm
- Units 8 & 10 - 140 sqm
- Rent from \$270 per week + Outgoings + GST

For further information or to arrange a private inspection, contact Michael Cruickshanks.

All information contained herein is gathered from sources we deem to be reliable. However, we cannot guarantee its accuracy and interested persons should rely on their own enquiries.

FOR LEASE

From \$270 per week + Outgoings + GST

AGENTS

Michael Cruickshanks
0409 362 130
michael@ljhhv.com.au

AGENCY

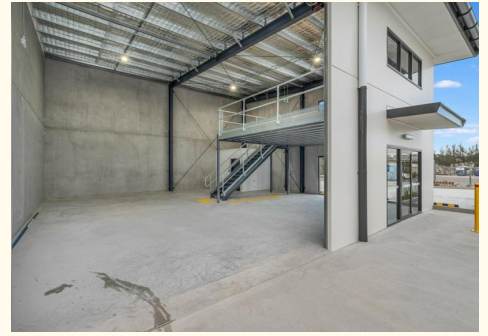
LJ Hooker Singleton
(02) 6572 4930

MORE DETAILS

Property ID 10FTF79
Property Type Industrial/Warehouse

Michael Cruickshanks 0409 362 130
Licensee | michael@ljhvv.com.au

LJ Hooker Singleton (02) 6572 4930
7/172 John Street, SINGLETON NSW 2330
singleton.ljhooker.com.au | reception@ljhvv.com.au



All information contained therein is gathered from relevant third parties sources.
We cannot guarantee or give any warranty about the information provided.
Interested parties must rely solely on their own enquiries.