



## Port Adelaide, 24 Francis Street

### Corporate Office Warehouse - Ideally located

- 390 square metre Gross Lettable Area
- Split 50/50 between office and warehouse
- Landlord to construct subject to tenant requirements.
- 10 + on-site car parks
- Zoned Strategic Employment by the City of Port Adelaide Enfield.

To organise an inspection by appointment only, please contact Fred Ettorre on 0413 445 915 or via email.

**For Lease**  
Contact Agent

**Building Area**  
390sqm

**Contact**  
**Fred Ettorre**  
0413 445 915  
fred@ljhfp.com.au



**Disclaimer:** All information contained therein is gathered from relevant third parties sources. We cannot guarantee or give any warranty about the information provided. Interested parties must rely solely on their own enquiries.

**LJ Hooker Flinders Park**  
**(08) 8352 1155**

## More About this Property

Property ID	HMUH67
Property Type	Industrial/Warehouse
Building Area	390 m2

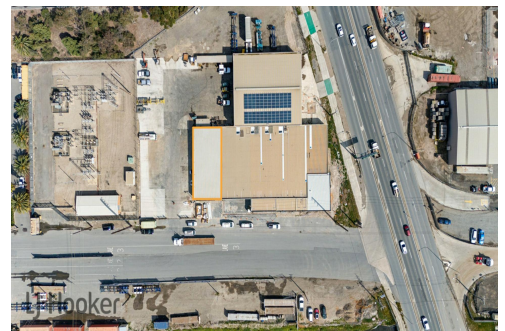
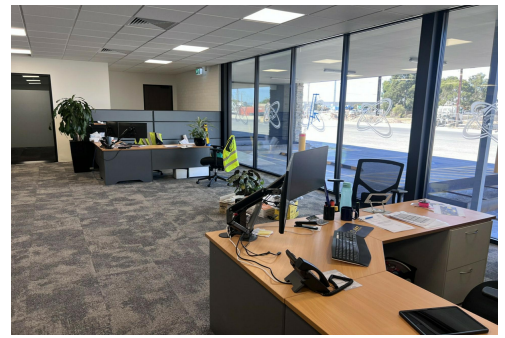
**Fred Ettorre 0413 445 915**

Property Consultant | [fred@ljhfp.com.au](mailto:fred@ljhfp.com.au)

**LJ Hooker Flinders Park (08) 8352 1155**

Suite 2/166-168 Grange Road, FLINDERS PARK SA 5025

[flinderspark.ljhooker.com.au](http://flinderspark.ljhooker.com.au) | [flinderspark@ljhfp.com.au](mailto:flinderspark@ljhfp.com.au)



**LJ Hooker Flinders Park  
(08) 8352 1155**

**Disclaimer:** All information contained therein is gathered from relevant third parties sources.  
We cannot guarantee or give any warranty about the information provided. Interested parties must rely solely on their own enquiries.



