



51 Barry Avenue, Mortdale

Rare Freestanding Asset

LJ Hooker Hurstville are delighted to offer 51 Barry Avenue, Mortdale for Auction.

Situated approximately 23 km south of Sydney CBD: within the popular Mortdale industrial precinct, the property offers excellent connectivity to the M5 Motorway and the new M8 Motorway (WestConnex)

Key Features of the property include:

- Building area: 460 m²
- Land area: 648 m²
- Access via 1x large roller shutter with wide driveway
- office and staff amenities
- 3-Phase power supply
- Additional front area for parking
- General industrial under Georges River Council
- Short drive to M5 Motorway on-ramp & short drive to Mortdale shopping village
- To be sold with vacant possession

To obtain a copy of the contract, please contact the exclusively appointed LJ Hooker Agents

FOR SALE
Under Contract

BUILDING AREA
460sqm

AGENTS

Louie Jovcevski
0418 449 006

louie.jovcevski@ljhooker.com.au

Travis Jovcevski
0421 923 662

travis.jovcevski@ljhooker.com.au

AGENCY

LJ Hooker Hurstville
(02) 9580 8887

All information contained therein is gathered from relevant third parties sources.
We cannot guarantee or give any warranty about the information provided.
Interested parties must rely solely on their own enquiries.



Disclaimer: Sizes & dimensions are approximate

Louie Jovcevski 0418 449 006
Travis Jovcevski 0421 923 662

MORE DETAILS

Property ID	C6PHEE
Property Type	Industrial/Warehouse
	2
Building Area	460 m2
Land Area	648 m2
Parking	3

Louie Jovcevski 0418 449 006

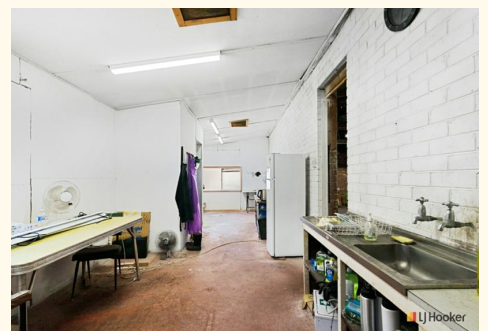
Principal/ Licensee in Charge | louie.jovcevski@ljhooker.com.au

Travis Jovcevski 0421 923 662

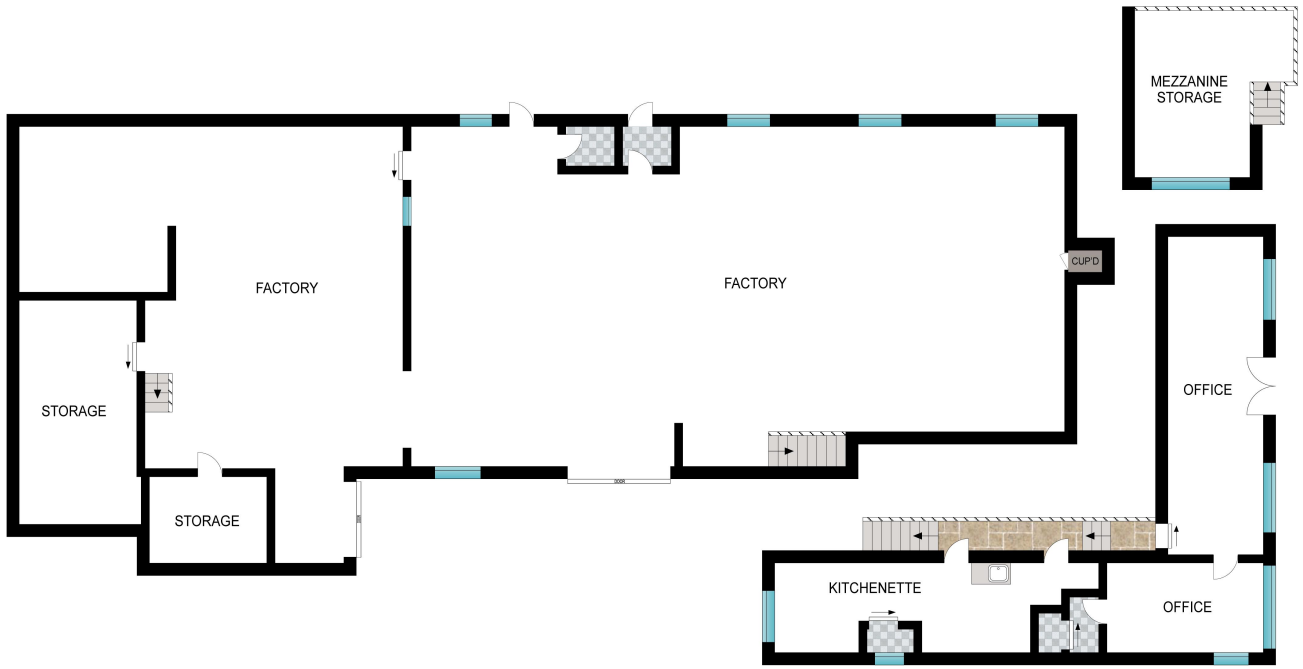
Sales and Property Executive | travis.jovcevski@ljhooker.com.au

LJ Hooker Hurstville (02) 9580 8887

Shop 6, 182 Forest Road, HURSTVILLE NSW 2220
hurstville.ljhooker.com.au | hurstville@ljhooker.com.au



All information contained therein is gathered from relevant third parties sources.
We cannot guarantee or give any warranty about the information provided.
Interested parties must rely solely on their own enquiries.



INT: 460 m²
TOTAL: 640 m²

0 1 2 3 4 5

Scale in metres. Indicative only. Dimensions are approximate. All information contained herein is gathered from sources we believe to be reliable. However, we cannot guarantee its accuracy and interested persons should rely on their own enquiries.

51 Barry Avenue, Mortdale