

## Manunda, Lot 37/170-182 Mayers Street

### Factory, Warehouse & Industrial

- 133m2 with car parks on title.
- Internal Toilet & Shower
- Hardstand area 36m2.
- 6m High ceilings.
- Motorised high roller door- (4.4m approx.)
- Clean span ceiling
- Two Exclusive Use Car Parks
- Communal wash-down area
- Ease of access close to CBD & airport
- Solid walls between each unit

#### For Lease

\$28,000 + GST + Outgoings

#### Contact

**Juliet Harper**

julieth@ljheh.com.au

These sheds are in high demand and move quickly so don't delay or risk missing out.....

Call Juliet Harper on 0403 201 456 for an inspection.



**Disclaimer:** All information contained therein is gathered from relevant third parties sources. We cannot guarantee or give any warranty about the information provided. Interested parties must rely solely on their own enquiries.

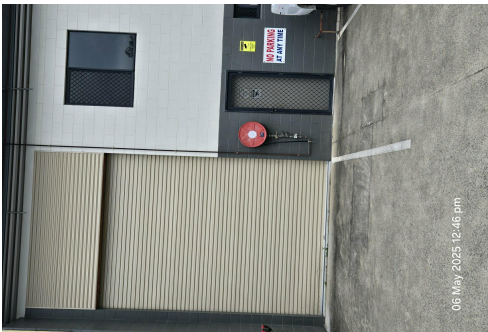
**LJ Hooker Cairns Edge Hill**  
(07) 4053 9999

# More About this Property

Property ID	3X89FMB
Property Type	Industrial/Warehouse
Land Area	133 m2

**Juliet Harper**  
Property Management Consultant | [julieth@ljheh.com.au](mailto:julieth@ljheh.com.au)

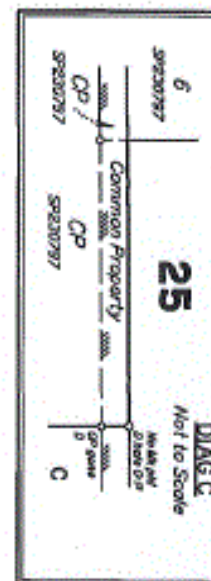
**LJ Hooker Cairns Edge Hill (07) 4053 9999**  
81 - 83 Woodward Street, EDGE HILL QLD 4870  
[cairnsedgehill.ljhooker.com.au](mailto:cairnsedgehill.ljhooker.com.au) | [cairnsedgehill@ljheh.com.au](mailto:cairnsedgehill@ljheh.com.au)



**Disclaimer:** All information contained therein is gathered from relevant third parties sources.  
We cannot guarantee or give any warranty about the information provided. Interested parties must rely solely on their own enquiries.

**LJ Hooker Cairns Edge Hill**  
**(07) 4053 9999**

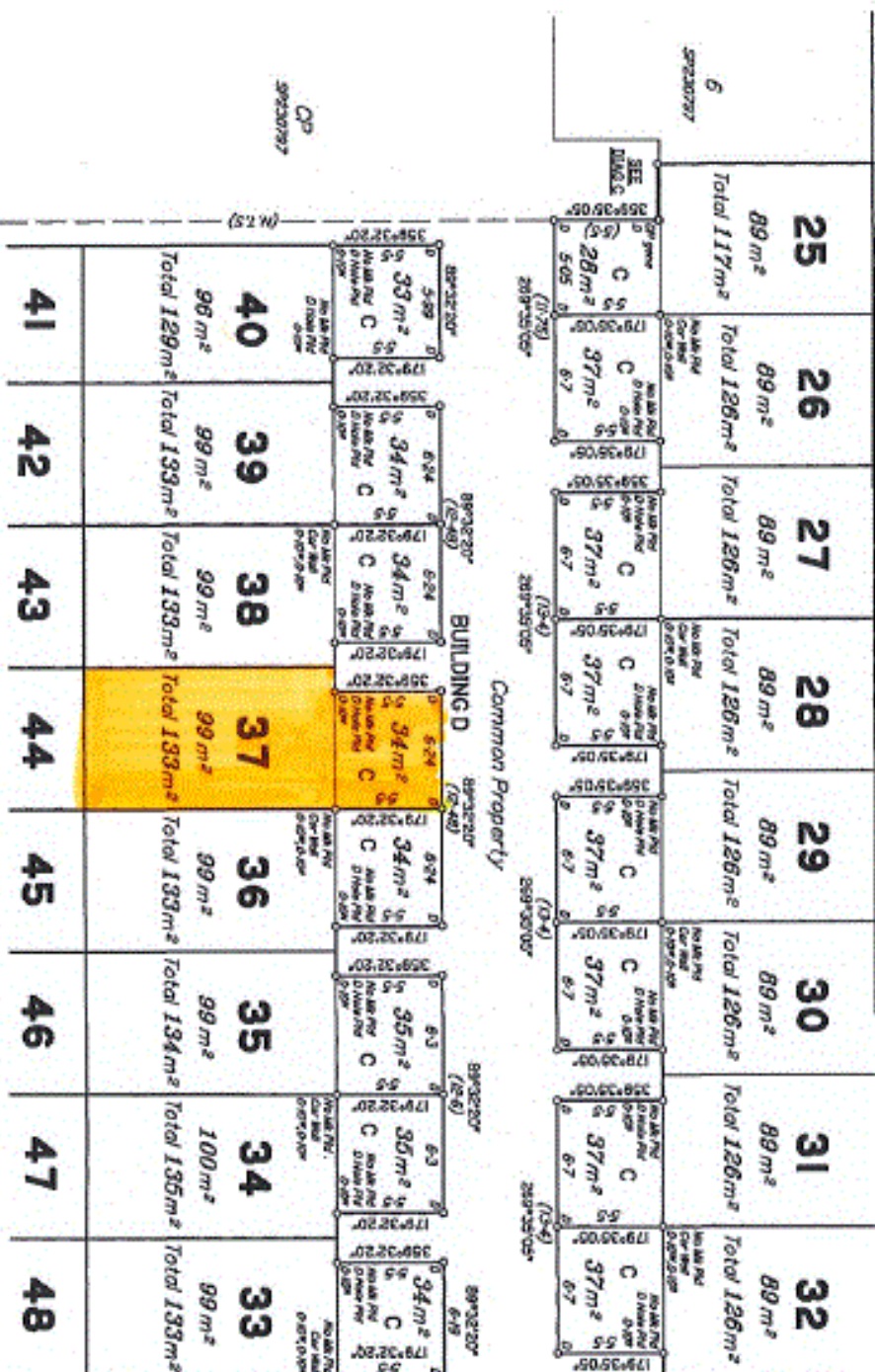




# LEVEL A

Level A Site Version 1: Level A Site Version 1

## Common Property



ADDITIONAL SHEET

All boundaries are structural features unless shown otherwise.  
C - Courtyard  
D - Drill Hole in Concrete

Scale 1:250 - Lengths are in Metres.

SEE SHEET 58

SP243596