

Manunda, Lot 37/170-182 Mayers Street

Factory, Warehouse & Industrial

- 133m2 with car parks on title.
- Internal Toilet & Shower
- Hardstand area 36m2.
- 6m High ceilings.
- Motorised high roller door- (4.4m approx.)
- Clean span ceiling
- Two Exclusive Use Car Parks
- Communal wash-down area
- Ease of access close to CBD & airport
- Solid walls between each unit

For Lease

\$28,000 + GST + Outgoings

Contact

Juliet Harper

julieth@ljheh.com.au

These sheds are in high demand and move quickly so don't delay or risk missing out.....

Call Juliet Harper on 0403 201 456 for an inspection.



LJ Hooker Cairns Edge Hill
(07) 4053 9999

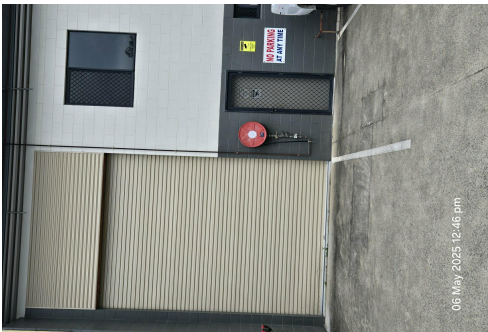
Disclaimer: All information contained therein is gathered from relevant third parties sources. We cannot guarantee or give any warranty about the information provided. Interested parties must rely solely on their own enquiries.

More About this Property

Property ID	3X89FMB
Property Type	Industrial/Warehouse
Land Area	133 m2

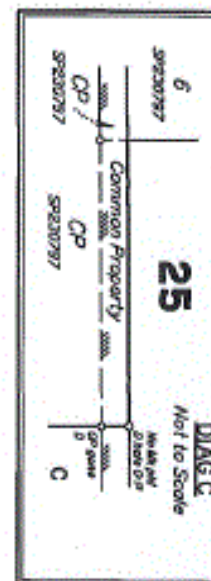
Juliet Harper
Property Management Consultant | julieth@ljheh.com.au

LJ Hooker Cairns Edge Hill (07) 4053 9999
81 - 83 Woodward Street, EDGE HILL QLD 4870
cairnsedgehill.ljhooker.com.au | cairnsedgehill@ljheh.com.au



Disclaimer: All information contained therein is gathered from relevant third parties sources.
We cannot guarantee or give any warranty about the information provided. Interested parties must rely solely on their own enquiries.

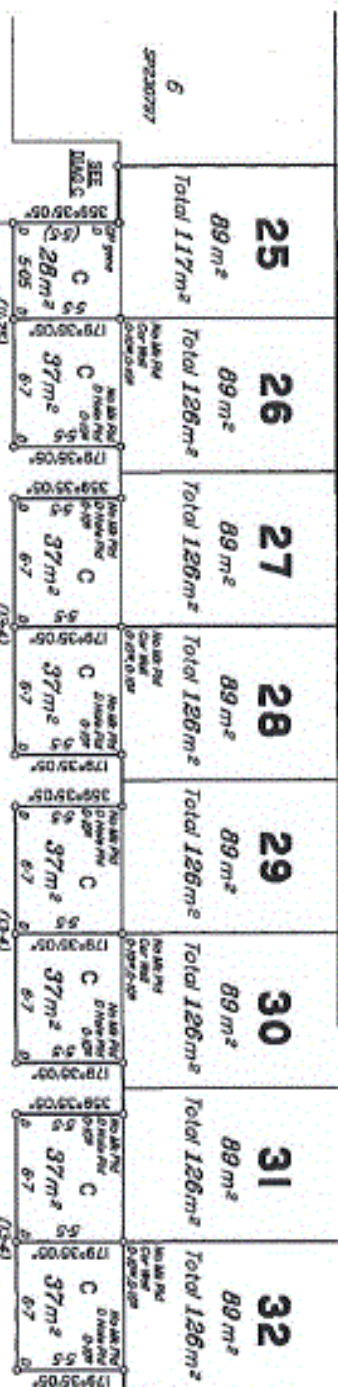
LJ Hooker Cairns Edge Hill
(07) 4053 9999



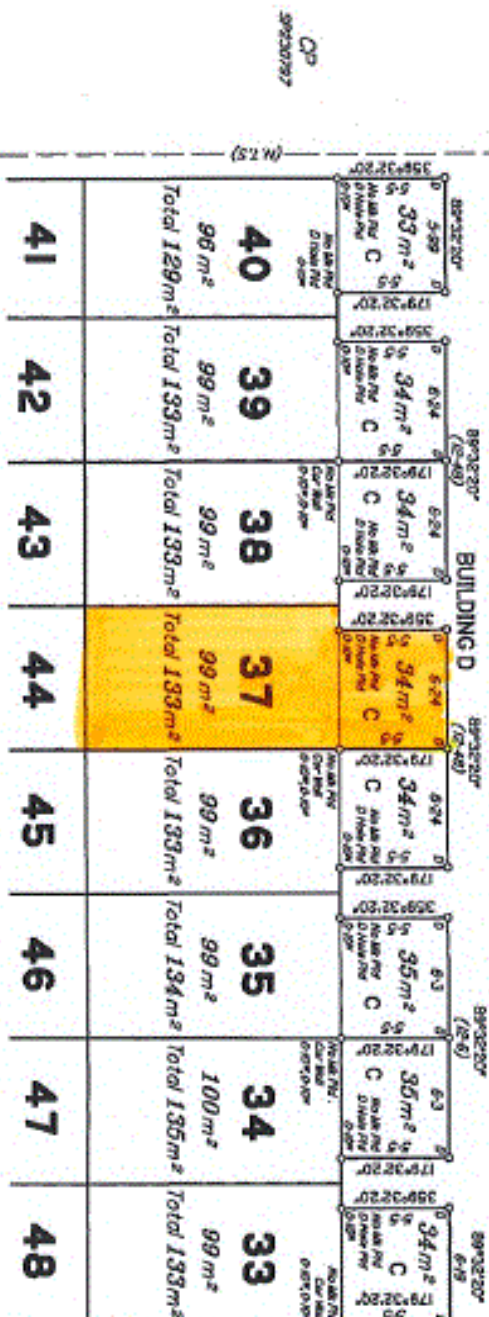
LEVEL A

Level A Site Version 1: Level A Site Version 1

Common Property BUILDING A



Common Property BUILDING D



All boundaries are structural features unless shown otherwise.
C - Courtyard
D - Drill Hole in Concrete

SEE SHEET 58

Scale 1:250 - Lengths are in Metres.

SP243596

ADDITIONAL SHEET

LJ Hooker Cairns Edge Hill
(07) 4053 9999



Disclaimer: All information contained therein is gathered from relevant third parties sources. We cannot guarantee or give any warranty about the information provided. Interested parties must rely solely on their own enquiries.