



286 North East Road, Klemzig

Versatile Office with Showroom/Warehouse

LJ Hooker Commercial Adelaide is proud to present to the market for lease 286 North East Road, Klemzig. A high-quality office with showroom/warehouse positioned in a prominent, high-traffic location. This versatile property provides an excellent opportunity for a wide range of businesses seeking strong exposure and convenient access.

Property features:

- Prime high-exposure frontage to North East Road
- 378 sqm of quality accommodation*
- 619 sqm of total site area*
- Substantial existing fit-out
- Flexible and functional layout
- 8 on-site car parks located at the front of the building
- Fully fenced and secure premises
- Conveniently located approximately 7km from the Adelaide CBD

To arrange an inspection please contact either -

Mario Bonomi 0412 080 993
Daniel Ferraro 0422 626 995

FOR LEASE
Contact Agent

BUILDING AREA
378sqm

AGENTS

Mario Bonomi
0412 080 993
mario.bonomi@ljhcommercialadelaide.com.au

Daniel Ferraro
0422 626 995
daniel.ferraro@ljhcommercialadelaide.com.au

AGENCY

Adelaide
(08) 8232 8844

All information contained therein is gathered from relevant third parties sources. We cannot guarantee or give any warranty about the information provided. Interested parties must rely solely on their own enquiries.

 **LJ Hooker Commercial**

- Approximate

RLA 231015

MORE DETAILS

Property ID	8JZH94
Property Type	Industrial/Warehouse Offices Showrooms/Bulky Goods
Building Area	378 m2
Land Area	619 m2

Mario Bonomi 0412 080 993

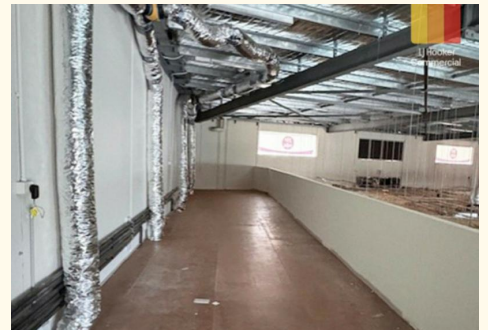
Principal | mario.bonomi@ljhcommercialadelaide.com.au

Daniel Ferraro 0422 626 995

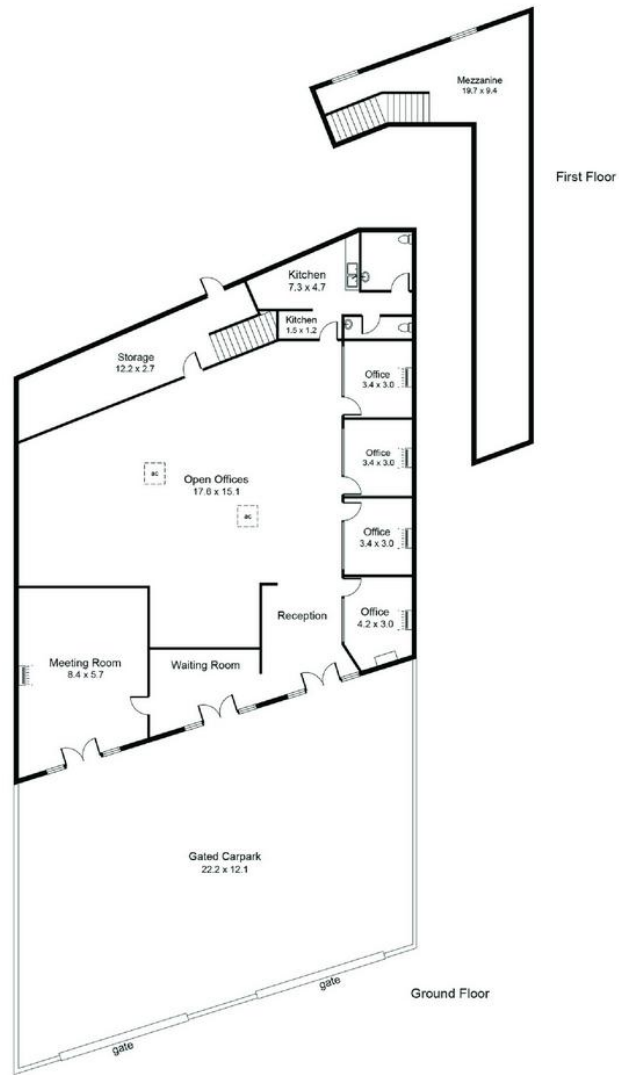
Commercial Sales & Leasing - Partner |
daniel.ferraro@ljhcommercialadelaide.com.au

Adelaide (08) 8232 8844

81 Flinders Street, ADELAIDE SA 5000
adelaide.ljhcommercial.com.au |
commercialadelaide@ljhcommercialadelaide.com.au



All information contained therein is gathered from relevant third parties sources.
We cannot guarantee or give any warranty about the information provided.
Interested parties must rely solely on their own enquiries.



619m²	378m²	241m²
TOTAL	Internal	Carpark



286 North East Road, Klemzig

Disclaimer: The information & figures obtained within this document has been compiled from information provided by vendor & sources that we believe are reliable. No warranty is given to their accuracy & all figures are subject to change without notice.