

## Kingaroy, Shop 2/10 Kingaroy Street

### Showroom and workshop

Located within the main Industrial Estate of Kingaroy comprises a flexible use shed.  
Approx - 108 sqm of air-conditioned showroom/office space, 54sqm of workshop/storage,  
54 sqm carport, kitchenette and toilet, bitumen car park and driveway.

Would Suite:

- Office space
- Storage space
- Depot for trade businesses
- Small scale workshop

#### For Lease

Please Call

#### Building Area

216sqm

#### Contact

**Clem Smith**

0419 642 209

[clem@ljhkingaroy.com.au](mailto:clem@ljhkingaroy.com.au)



**Disclaimer:** All information contained therein is gathered from relevant third parties sources.  
We cannot guarantee or give any warranty about the information provided. Interested parties must rely solely on their own enquiries.

**LJ Hooker South Burnett**  
**(07) 4162 1620**

## More About this Property

<b>Property ID</b>	7QVCH6K
<b>Property Type</b>	Industrial/Warehouse
<b>Building Area</b>	216 m2

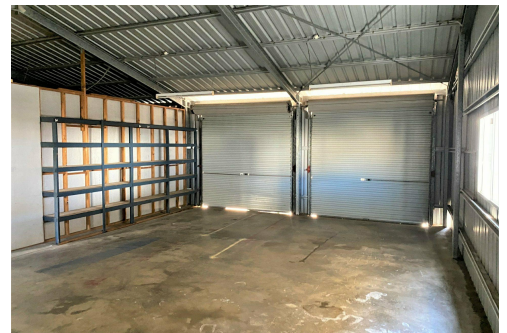
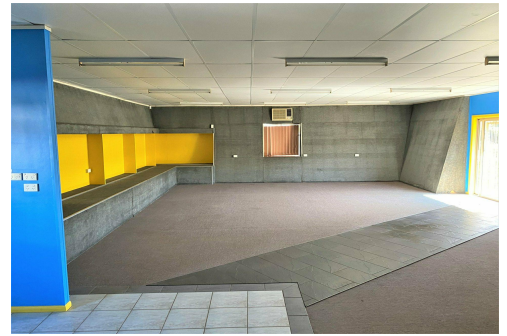
**Clem Smith 0419 642 209**

Principal | [clem@ljhkingaroy.com.au](mailto:clem@ljhkingaroy.com.au)

**LJ Hooker South Burnett (07) 4162 1620**

196 Haly Street, KINGAROY QLD 4610

[kingaroy.ljhooker.com.au](mailto:kingaroy.ljhooker.com.au) | [kingaroy@ljhkingaroy.com.au](mailto:kingaroy@ljhkingaroy.com.au)



**Disclaimer:** All information contained therein is gathered from relevant third parties sources.  
We cannot guarantee or give any warranty about the information provided. Interested parties must rely solely on their own enquiries.

**LJ Hooker South Burnett  
(07) 4162 1620**