

Currumbin Waters, 11/7 Traders Way

Rare Currumbin Waters Opportunity —Iconic Creative Industrial Space

We're proud to announce our exclusive appointment to lease one of Currumbin Waters' most tightly held and sought-after industrial spaces —a rare opportunity for creative and industrial operators alike.

Tucked away in a private location just minutes from the M1, this 124sqm versatile unit offers easy access north and south, with nearby neighbours including Balter Brewing and a mix of surf, design, and trade businesses.

Currently fitted as a surfboard shaping facility, the space includes:

- * 2 x shaping bays
- * Air-conditioning & 3-phase power
- * Kitchenette & bathroom
- * Exclusive rear courtyard with outdoor shower

For Lease

\$2,275 pcm + Outgoings + GST

Building Area

124sqm

Contact

Beau Cater

0415 131 494

beau@ljhookersgc.com.au

Tara Imlach

0452 418 343

tara@ljhookersgc.com.au



Southern Gold Coast
(07) 5576 5500

Disclaimer: All information contained therein is gathered from relevant third parties sources. We cannot guarantee or give any warranty about the information provided. Interested parties must rely solely on their own enquiries.

- * High roller door & onsite parking
- * Minutes to the M1 and major local operators

Available from July 2025, the fit-out can remain for a shaper looking to step into a purpose-built setup or be removed for those needing a blank canvas.

This is a unique chance to secure a space in one of the most in-demand industrial precincts on the Southern Gold Coast - offering privacy, functionality, and flexibility in a location synonymous with creativity, surf culture, and local industry.

For more information or to arrange an inspection, contact Exclusive Agents:
Beau Cater 0415 131 494 | Tara Imlach 0452 418 343

Disclaimer:

All information (including but not limited to the property area, floor size, price, address and general property description) is provided as a convenience to you, and has been provided to LJ Hooker by third parties. LJ Hooker is unable to definitively confirm whether the information listed is correct or 100% accurate. LJ Hooker does not accept any liability (direct or indirect) for any injury, loss, claim, damage or any incidental or consequential damages, including but not limited to lost profits or savings, arising out of or in any way connected with the use of any information, or any error, omission or defect in the information, contained on the Website. Information contained on the Website should not be relied upon and you should make your own enquiries and seek legal advice in respect of any property on the Website. Prices displayed on the Website are current at the time of issue, but may change.

More About this Property

Property ID	1RFHXB
Property Type	Industrial/Warehouse
Building Area	124 m2

Beau Cater 0415 131 494

Commercial Sales & Leasing Specialist | beau@ljhookersgc.com.au

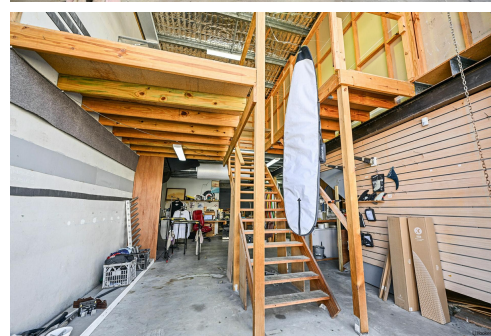
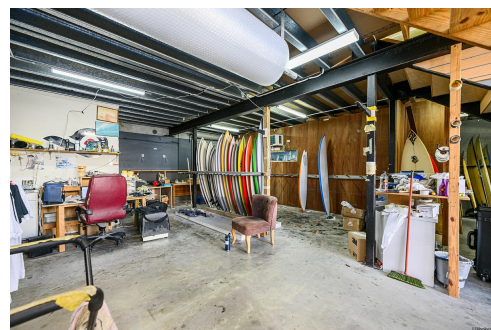
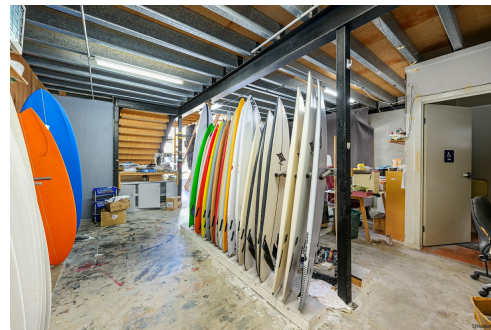
Tara Imlach 0452 418 343

Senior Commercial Sales & Leasing Specialist - Independent Contractor | tara@ljhookersgc.com.au

Southern Gold Coast (07) 5576 5500

1/18 Park Ave, BURLEIGH HEADS QLD 4220

southerngoldcoast.ljhcommercial.com.au | commercial@ljhookersgc.com.au

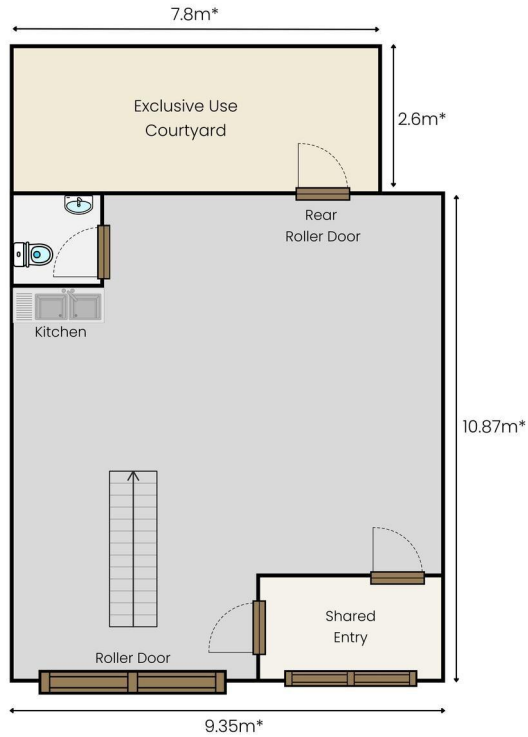


Disclaimer: All information contained therein is gathered from relevant third parties sources. We cannot guarantee or give any warranty about the information provided. Interested parties must rely solely on their own enquiries.

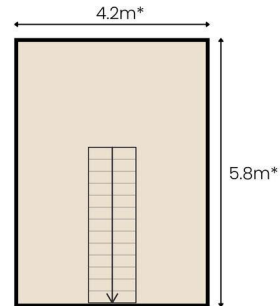
Southern Gold Coast
(07) 5576 5500

11/7 Traders Way
Currumbin Waters 4223

LJ Hooker Commercial
Southern Gold Coast



Total Area : 124m*



Beau Cater
0415 131 494
beau@ljhookersgc.com.au

Tara Imlach
0452 418 343
tara@ljhookersgc.com.au

DISCLAIMER:
Plans shown are only indicative of layout.
Dimensions are approximate.
*Approximate

LJ Hooker

LJ Hooker Commercial

Southern Gold Coast
(07) 5576 5500

Disclaimer: All information contained therein is gathered from relevant third parties sources.
We cannot guarantee or give any warranty about the information provided. Interested parties must rely solely on their own enquiries.