

## Currumbin Waters, 1/6 Nuban Street

SOLD BY TARA IMLACH & BEAU CATER

Perfectly positioned to leverage Currumbin Waters' expanding commercial landscape, this spacious 384sqm\* property offers the ideal setting for diverse business ventures-from manufacturing to warehousing. Designed to maximize functionality, this asset provides a blend of high-spec office and warehouse amenities in one of the Gold Coast's most desirable industrial hubs.

### Property Highlights:

- 384sqm\* of versatile space
- Executive corner office with floor-to-ceiling glass, flooding the space with natural light
- Open meeting room and dedicated server room
- Reception/waiting area
- Kitchenette and lounge room
- Full-height warehouse with motorised roller door access
- Private Amenities

**For Sale**  
\$1,500,000

**Building Area**  
350sqm

**Contact**  
**Tara Imlach**  
0452 418 343  
tara@ljhookersgc.com.au

**Beau Cater**  
0415 131 494  
beau@ljhookersgc.com.au



**Southern Gold Coast**  
**(07) 5576 5500**

**Disclaimer:** All information contained therein is gathered from relevant third parties sources. We cannot guarantee or give any warranty about the information provided. Interested parties must rely solely on their own enquiries.



- Security system
- Ducted air-conditioning
- High growth area
- Excellent accessibility: M1 - 3 mins, GC Airport - 10 minutes, NSW boarder - 6 mins

Don't miss this chance to secure a prime industrial asset in the sought-after Currumbin Waters. Contact us today to discuss this opportunity.

Disclaimer:

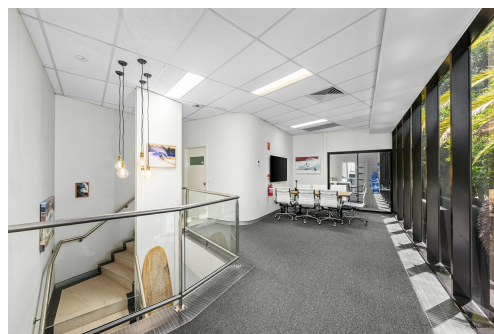
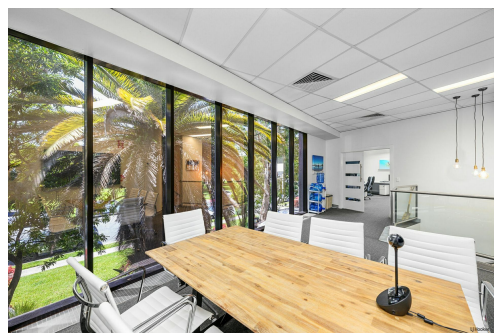
All information (including but not limited to the property area, floor size, price, address and general property description) is provided as a convenience to you, and has been provided to LJ Hooker by third parties. LJ Hooker is unable to definitively confirm whether the information listed is correct or 100% accurate. LJ Hooker does not accept any liability (direct or indirect) for any injury, loss, claim, damage or any incidental or consequential damages, including but not limited to lost profits or savings, arising out of or in any way connected with the use of any information, or any error, omission or defect in the information, contained on the Website. Information contained on the Website should not be relied upon and you should make your own enquiries and seek legal advice in respect of any property on the Website. Prices displayed on the Website are current at the time of issue, but may change.

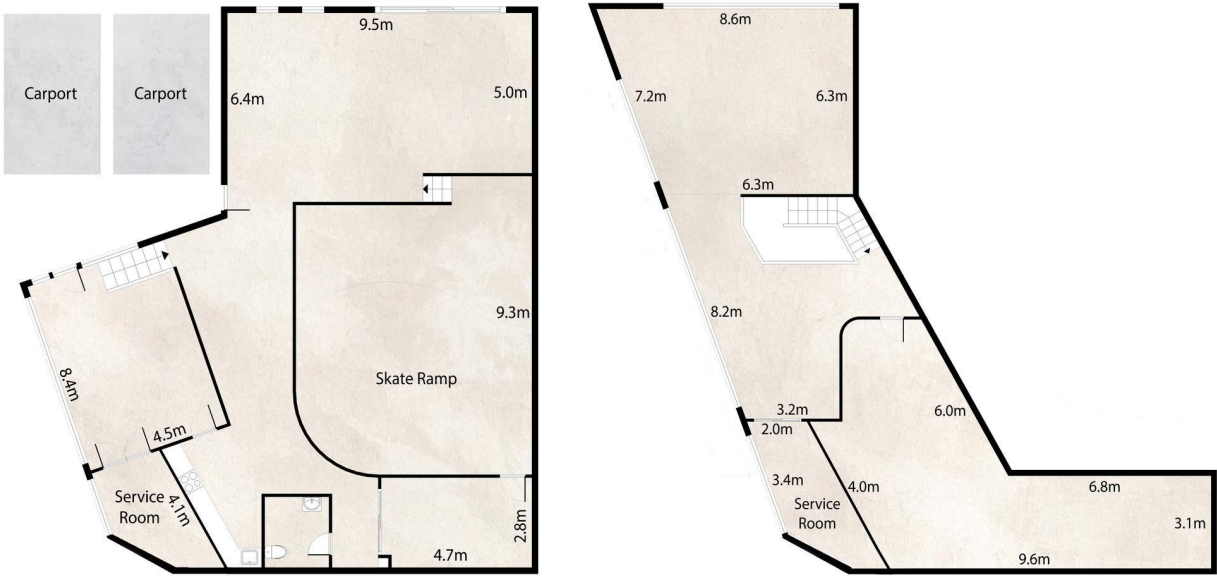
## More About this Property

Property ID	1NJHXB
Property Type	Industrial/Warehouse
Building Area	350 m2

**Tara Imlach 0452 418 343**  
 Senior Commercial Sales & Leasing Specialist - Independent Contractor |  
 tara@ljhookersgc.com.au  
**Beau Cater 0415 131 494**  
 Commercial Sales & Leasing Specialist | beau@ljhookersgc.com.au

**Southern Gold Coast (07) 5576 5500**  
 1/18 Park Ave, BURLEIGH HEADS QLD 4220  
 southerngoldcoast.ljhcommercial.com.au | commercial@ljhookersgc.com.au





All measurements are approximate and for illustrative purposes only. This floorplan is to be considered a general guide only. Interested parties should rely on their own enquiries. Floorplan provided by [www.AshChynowethPhotography.com](http://www.AshChynowethPhotography.com)

LJ Hooker