

Condell Park, 19/390 Marion Street

Available Now | Mezzanine Office

LJ Hooker Bankstown are pleased to present for lease Unit 19 / 390 Marion Street, Condell Park.

Key features of the property include:

- Building office space with total area approximately 70 sqm
- Presentable air conditioned mezzanine office with floorboards
- Practical floorplan set up with 2 individual offices and waiting area
- Separate shower room & shared toilet with warehouse
- Separate kitchenette and lunch area
- Secure complex with automated security gate allowing for 24 hour access
- Great location - minutes to the M5 Motorway, Milperra Road and Hume Highway

For Lease

\$20,800 pa

Building Area

70-70sqm

Contact

Brooke El Hakim

0430 082 202

Brooke.bm@ljhooker.com.au



LJ Hooker Bankstown | Moorebank
(02) 9708 2244

Disclaimer: All information contained therein is gathered from relevant third parties sources. We cannot guarantee or give any warranty about the information provided. Interested parties must rely solely on their own enquiries.

Contact the exclusive agent Brooke El Hakim on 0452 180 080 for further information or to arrange an inspection.

More About this Property

Property ID	RVEF8E
Property Type	Industrial/Warehouse
Building Area	70-70 m ²

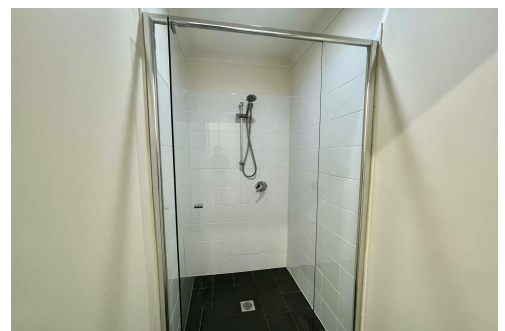
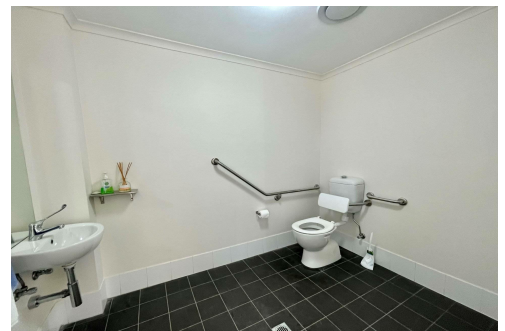
Brooke El Hakim

Property Manager | Brooke.bm@ljhooker.com.au

LJ Hooker Bankstown | Moorebank (02) 9708 2244

11 Marion Street, BANKSTOWN NSW 2200

bankstown.ljhooker.com.au | bankstown@ljhooker.com.au



**LJ Hooker Bankstown | Moorebank
(02) 9708 2244**

Disclaimer: All information contained therein is gathered from relevant third parties sources. We cannot guarantee or give any warranty about the information provided. Interested parties must rely solely on their own enquiries.