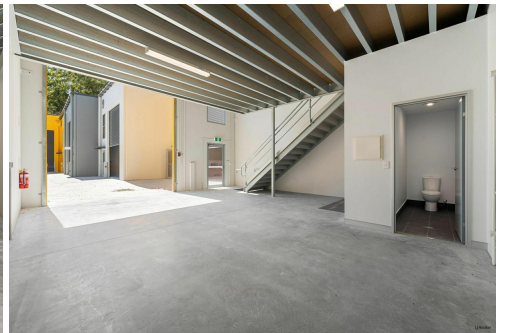
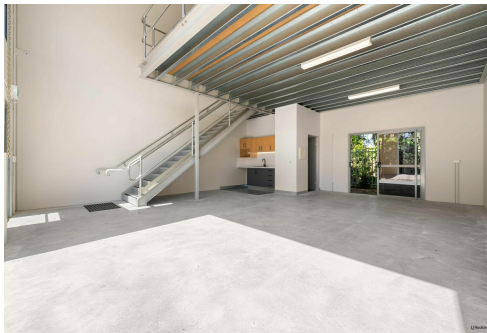


 LJ Hooker Commercial

Burleigh Heads



Burleigh Heads, 11/26 Ern Harley Drive

102m²* Warehouse, New Build

Available Now —Move-In Ready

This versatile commercial property, located in the heart of Burleigh Heads, presents an excellent opportunity for businesses seeking a modern, secure environment. The property is ideal for a range of commercial uses and offers immediate availability.

Total Area: 102m²

Location: 11/26 Ern Harley Drive, Burleigh Heads QLD 4220

Lease Terms: Competitive rental rates. Available for immediate occupancy.

Rent: \$2,500 per month + GST + outgoings

Contact the owners exclusive agent Jack Young 0404 035 871

For Lease

\$2,500.00pcm +GST +Outgoings

Building Area

102sqm

Contact

Jack Young

0404 035 871

jack@ljhookersgc.com.au

Disclaimer:

All information (including but not limited to the property area, floor size, price, address and

LJ Hooker

Disclaimer: All information contained therein is gathered from relevant third parties sources.

We cannot guarantee or give any warranty about the information provided. Interested parties must rely solely on their own enquiries.

LJ Hooker Southern Gold Coast
(07) 5534 4033

general property description) is provided as a convenience to you, and has been provided to LJ Hooker by third parties. LJ Hooker is unable to definitively confirm whether the information listed is correct or 100% accurate. LJ Hooker does not accept any liability (direct or indirect) for any injury, loss, claim, damage or any incidental or consequential damages, including but not limited to lost profits or savings, arising out of or in any way connected with the use of any information, or any error, omission or defect in the information, contained on the Website. Information contained on the Website should not be relied upon and you should make your own enquiries and seek legal advice in respect of any property on the Website. Prices displayed on the Website are current at the time of issue, but may change.

More About this Property

Property ID	1TY8F47
Property Type	Industrial/Warehouse
Building Area	102 m2

Jack Young 0404 035 871
Commercial Property Manager | jack@ljhookersgc.com.au

LJ Hooker Southern Gold Coast (07) 5534 4033
Shop 2, 10 Fifth Avenue, PALM BEACH QLD 4221
southerngoldcoast.ljhooker.com.au | enquiries@ljhookersgc.com.au

