

16 Flinders Street, Wollongong

High-Visibility Streetfront

Make your brand unmissable with large-format windows, strong signage lines and practical on-site amenities. Exposure to busy Flinders Street traffic to and from Wollongong CBD. Property can be leased as two separate premises as follows:

Whole Property | \$94,800 pa + GST
Street Level | \$52,000 pa + GST
Basement Level | \$42,000 pa + GST

Features

- Big street-facing windows suited to bold displays
- Excellent signage sightlines for steady drive-by visibility
- Rear parking for staff/customers
- Separate downstairs storage area
- Simple, open plan that's easy to configure
- Existing cool rooms on site (redundant/in situ)
- Range hood in place for food-oriented operators
- Opposite petrol station and laundromat for constant vehicle movements

A straightforward, high-impact base for retail, showroom or food-adjacent use. Inspect by appointment.
E3 Zoning | Productivity Support Commercial Zone

FOR LEASE

\$94,800 pa plus GST

BUILDING AREA

326sqm

AGENTS

Chris Tudzarov
0451 714 441
chris.tudzarov@ljhwollongong.com.au

Con Papadopoulos
0408 604 040
con.papadopoulos@ljhwollongong.com.au

AGENCY

LJ Hooker Wollongong | Corrimal | Shellharbour
(02) 4229 8600

MORE DETAILS

Property ID	VHBHQZ
Property Type	Retail Other Industrial/Warehouse
Building Area	326 m2
Land Area	551 m2
Parking	5

Chris Tudzarov 0451 714 441

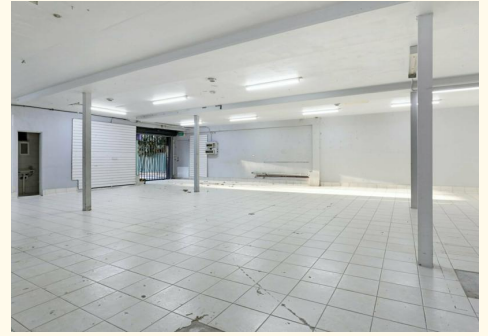
Commercial Sales & Leasing | chris.tudzarov@ljhwollongong.com.au

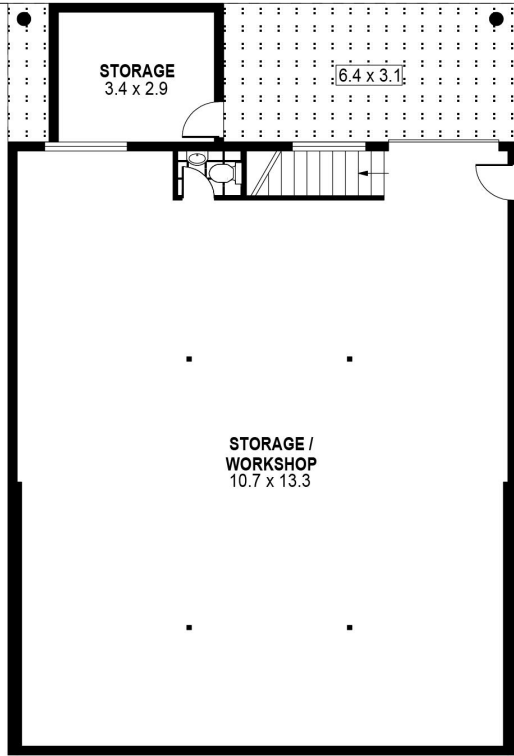
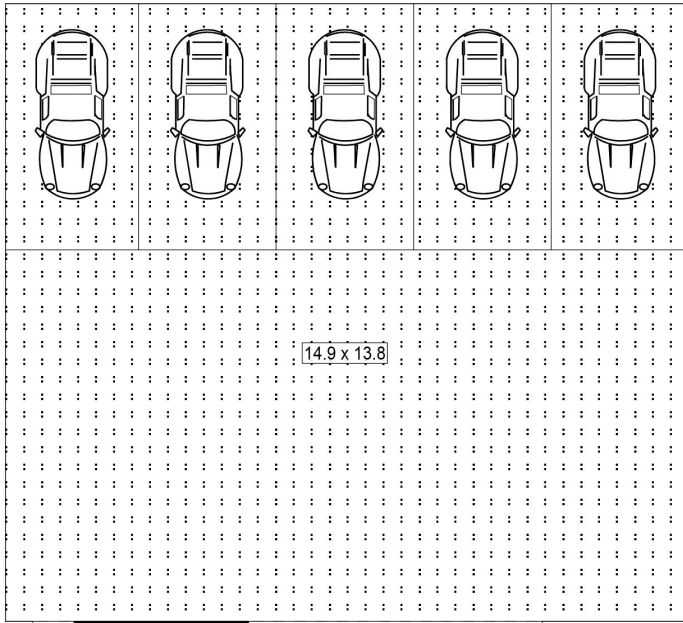
Con Papadopoulos 0408 604 040

Commercial Property Manager |
con.papadopoulos@ljhwollongong.com.au

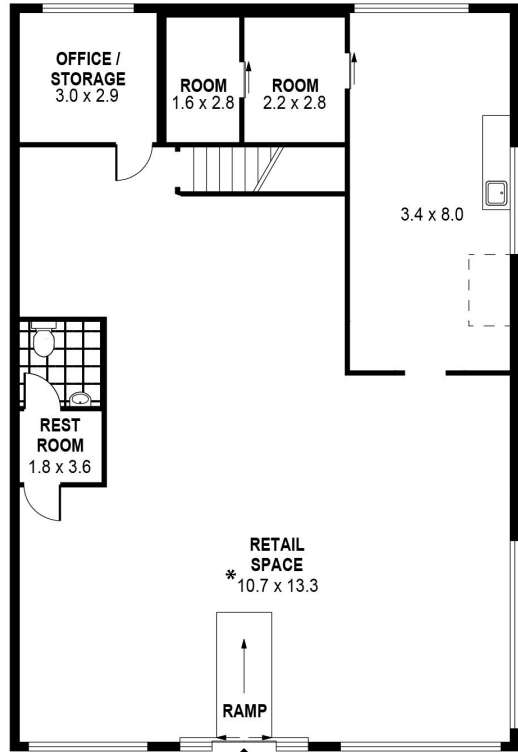
LJ Hooker Wollongong | Corrimal | Shellharbour (02) 4229 8600

69 Kembla Street, WOLLONGONG NSW 2500
wollongong.ljhooker.com.au | wollongong@ljhooker.com.au





LOWER LEVEL



GROUND LEVEL



SCALE (METRES)

PLANS SHOWN ONLY INDICATIVE OF LAYOUT. DIMENSIONS ARE APPROXIMATE.
Ref. No: 84772

INT : 316m²
EXT : 225m²
STORAGE : 10m²

16 FLINDERS STREET

WOLLONGONG