



Waimate, 16 Timaru Road

Kingswood Motel - Your Perfect Investment Opportunity!

\$1,790,000 + GST (if any)

Nestled in the heart of the South, Kingswood Motel is a fantastic business opportunity with unbeatable location and potential. This well-maintained twelve-unit motel offers a range of accommodation options, including one wheelchair-accessible unit with a shower.

- Two-Bedroom Manager's Residence - Fully self-contained with an internal access garage for ultimate convenience.
- Spacious & Practical - A separate office, on-site laundry, and a double carport provide added functionality.
- Guest Comfort & Convenience - Each unit has off-street parking, ensuring a seamless experience for visitors.
- Prime Location - A short stroll to town for local amenities and positioned as the perfect gateway to the stunning lakes and outdoor adventures.

Whether you're an investor or looking for a lifestyle change, Kingswood Motel is a rare

For Sale
\$1,790,000

Building Area
690sqm

Contact
Ruth Burke
027 280 6352
ruth@ljhwaimate.co.nz



LJ Hooker Waimate
(03) 689 7974
Enting Real Estate Limited

Disclaimer: All information contained therein is gathered from relevant third parties sources. We cannot guarantee or give any warranty about the information provided. Interested parties must rely solely on their own enquiries.

opportunity to own a thriving accommodation business in a sought-after location.

Don't miss out - contact me today for more details!

Disclaimer:

This information has been supplied by the owners and Corelogic. LJ Hooker Timaru, Geraldine and Waimate are merely passing over this information as supplied to us. We cannot guarantee its accuracy and reliability as we have not checked, audited or reviewed the information. All intending purchasers are advised to conduct their own due diligence investigation into this information. To the maximum extent permitted by law, we do not accept any responsibility to any part for the accuracy or use of the information herein. Enting Real Estate Limited Licensed (REAA 2008).

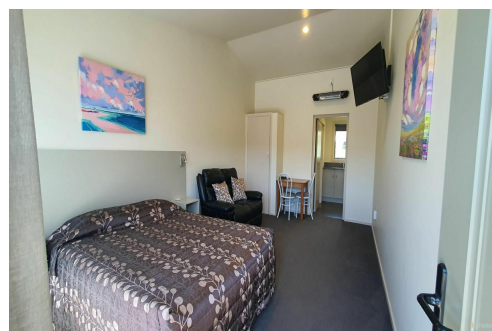
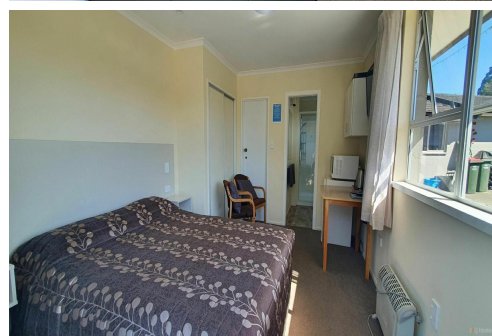
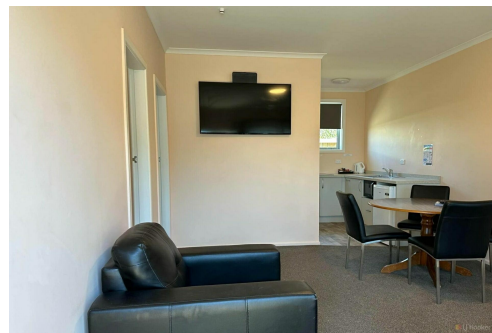
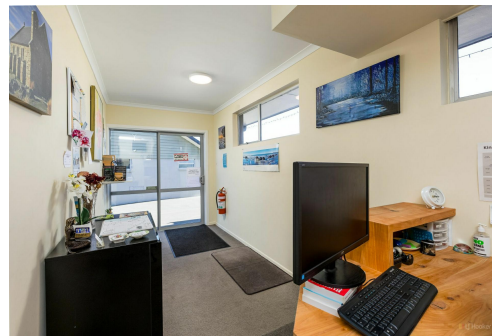
More About this Property

Property ID	866GNG
Property Type	Hotel/Leisure
Building Area	690 m ²
Land Area	2114 m ²

Licensed Real Estate Agents (REAA2008)

Ruth Burke 027 280 6352
Licensed Branch Manager | ruth@ljhwaimate.co.nz

LJ Hooker Waimate (03) 689 7974
Enting Real Estate Limited
83 Queen Street, WAIMATE 7924
waimate.ljhooker.co.nz | Waimate@ljhooker.co.nz



Disclaimer: All information contained therein is gathered from relevant third parties sources. We cannot guarantee or give any warranty about the information provided. Interested parties must rely solely on their own enquiries.

LJ Hooker Waimate
(03) 689 7974
Enting Real Estate Limited