



## Tully, 147 Tully Gorge Road

### SECURE STORAGE SHEDS

Need somewhere to store your belongings that's not far from town?

Large sheds 6x3.- \$250.00 per month

Small sheds 3x3. - \$200.00 per month

1 Month minimum rental

\*Bond and conditions apply - Location is approximately 5 minutes from Town.

#### For Lease

\$250.00 OR \$200 P/MTH

#### Building Area

18sqm

#### Contact

**Sam Herrod**

leasing@ljhtully.com.au



**LJ Hooker Tully**  
**(07) 4068 1100**

**Disclaimer:** All information contained therein is gathered from relevant third parties sources. We cannot guarantee or give any warranty about the information provided. Interested parties must rely solely on their own enquiries.

## More About this Property

<b>Property ID</b>	IDMGYA
<b>Property Type</b>	Commercial Farming
<b>Building Area</b>	18 m <sup>2</sup>
<b>Land Area</b>	1005 m <sup>2</sup>

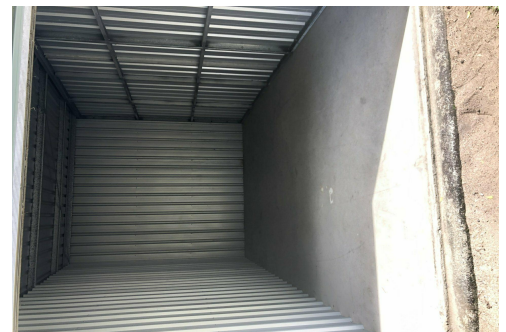
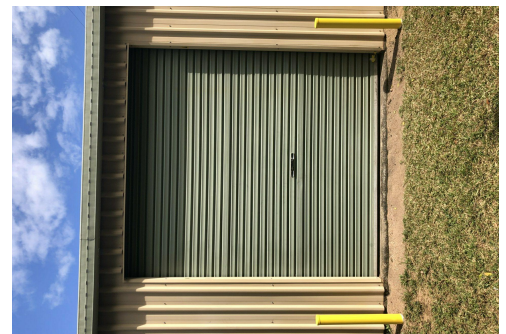
### Sam Herrod

Commercial Investment Manager | [leasing@ljhtully.com.au](mailto:leasing@ljhtully.com.au)

### LJ Hooker Tully (07) 4068 1100

53 Butler Street, TULLY QLD 4854

[tully.ljhooker.com.au](http://tully.ljhooker.com.au) | [reception@ljhtully.com.au](mailto:reception@ljhtully.com.au)



**LJ Hooker Tully**  
**(07) 4068 1100**

**Disclaimer:** All information contained therein is gathered from relevant third parties sources. We cannot guarantee or give any warranty about the information provided. Interested parties must rely solely on their own enquiries.