

1/20 Carrington Road, Torrington

## A-Class Showroom Facility with Exceptional Exposure!

An exceptional leasing opportunity at 1/20 Carrington Road, Torrington. Located on Toowoomba's "Machinery Mile" this quality 945m<sup>2</sup>\* tilt panel offering has unrivalled exposure with a highly functional mix of warehousing & display area.

Current fit out includes:

- 560m<sup>2</sup>\* of retail showroom with air conditioning
- Loading dock with 252m<sup>2</sup>\* warehouse/storage with electric roller door
- 3 private offices a kitchen and Male/Female amenities
- Ample on-site car parking
- Medium Impact Industry zoning
- Complimented by quality national businesses
- Prominent Carrington Road exposure offering optimal signage opportunities
- Ready for a new tenant early 2025\*

For more information, please contact marketing agents Chris Stewart of L J Hooker Commercial Toowoomba.

- approx

**FOR LEASE**  
Contact Agent

**BUILDING AREA**  
945sqm

**AGENTS**

Christopher Stewart  
0451 948 001  
cstewart@ljht.com.au

**AGENCY**

Toowoomba  
(07) 4688 2222

All information contained therein is gathered from relevant third parties sources. We cannot guarantee or give any warranty about the information provided. Interested parties must rely solely on their own enquiries.

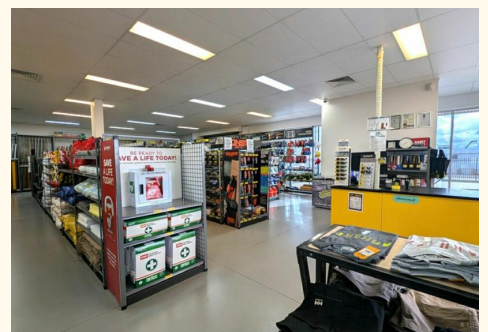
 **LJ Hooker Commercial**

## MORE DETAILS

Property ID	ZYNG6F
Property Type	Showrooms/Bulky Goods Industrial/Warehouse
Building Area	945 m <sup>2</sup>
Land Area	1.65 ha
Parking	20

**Christopher Stewart 0451 948 001**  
Managing Director | [cstewart@ljht.com.au](mailto:cstewart@ljht.com.au)

**Toowoomba (07) 4688 2222**  
Level 1, 677-683 Ruthven Street, TOOWOOMBA QLD 4350  
[toowoomba.ljhcommercial.com.au](http://toowoomba.ljhcommercial.com.au) | [toowoomba@ljhtc.com.au](mailto:toowoomba@ljhtc.com.au)



All information contained therein is gathered from relevant third parties sources.  
We cannot guarantee or give any warranty about the information provided.  
Interested parties must rely solely on their own enquiries.