



342 Preservation Drive, Sulphur Creek

Freehold Business with Residence! 'Highway Halt'

Outstanding opportunity to purchase this iconic business. The residence comprises of 2 bedrooms, kitchen, bathroom/laundry and a living room with stunning sea views.

- Freehold business, WIWO
- Prime trading location
- Quick stop milk bar/takeaway with dine-in area
- Two bedroom Residence upstairs with internal & external access
- Total land area 602m2, built in 1980.

Located on beautiful Preservation Drive a busy main road just off the Bass Highway. This thriving coastal Tassie town is absolutely booming, the possibilities are endless.

The current owners have operated this successful business for over 15 years and it's time for someone else to take over and add their own special touch!

Phone Keryn for further details!

- *** The information on this website has been provided to LJ Hooker Wynyard by third parties. While LJ Hooker Wynyard have

FOR SALE
\$1,200,000

AGENTS

Keryn Newman
0427 539 989
knewman.wynyard@ljhooker.com.au

AGENCY

LJ Hooker Wynyard
(03) 6442 3477

All information contained therein is gathered from relevant third parties sources. We cannot guarantee or give any warranty about the information provided. Interested parties must rely solely on their own enquiries.



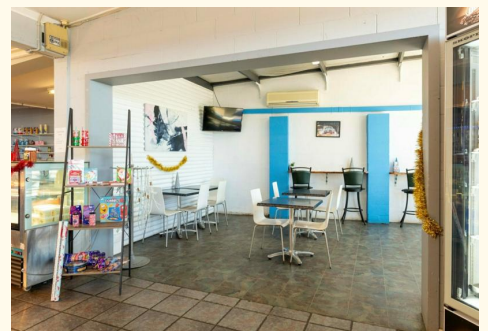
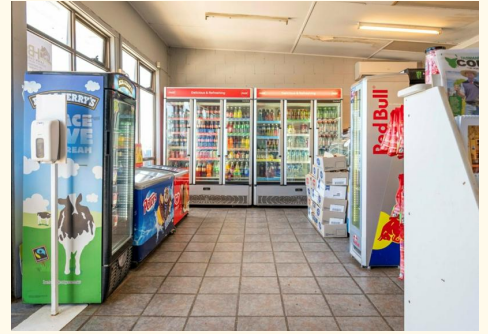
taken every care to verify the accuracy of the property details this information should not be relied upon and you should make your own enquiries and seek legal advice in respect of any property on the Website. All measurements are approximates ****

MORE DETAILS

Property ID	JTXFD3
Property Type	Retail
Land Area	602 m2
Including	Toilets (3)

Keryn Newman 0427 539 989
Real Estate Agent | knewman.wynyard@ljhooker.com.au

LJ Hooker Wynyard (03) 6442 3477
98 Goldie Street, WYNYARD TAS 7325
wynyard.ljhooker.com.au | wynyard@ljhooker.com.au



All information contained therein is gathered from relevant third parties sources.
We cannot guarantee or give any warranty about the information provided.
Interested parties must rely solely on their own enquiries.

