

DISCLAIMER: This is for illustrative purposes only. All dimensions are approximate and it does not constitute part of any legal documents.

Address:  
**2 Albert Road, Strathfield**



## Strathfield, 2 Albert Road

### Bright and Airy - Choice of 2 Office Spaces!

Situated on the first floor right opposite Strathfield Station with an abundance of natural light is a choice of 2 office spaces. Rent negotiable, flexible terms offers considered, no outgoings!

Features include:

- \* Office 1: approx. over 24m<sup>2</sup>
- \* Office 2: approx. 30m<sup>2</sup>
- \* Suitable for various uses
- \* Flexible terms and conditions
- \* Air-conditioning
- \* Located across from Strathfield Station
- \* Close to all amenities
- \* Available now

#### For Lease

Contact Agent

#### Building Area

24sqm

#### Contact

**Tom Xenakis**

0419 353 353

tom@ljhstrathfield.com.au



**LJ Hooker Strathfield**  
**(02) 9746 2222**

**Disclaimer:** All information contained therein is gathered from relevant third parties sources. We cannot guarantee or give any warranty about the information provided. Interested parties must rely solely on their own enquiries.

For further information please contact Tom Xenakis on 0419 353 353 or by email at [tom@ljhstrathfield.com.au](mailto:tom@ljhstrathfield.com.au)

## More About this Property

Property ID	SV7FAX
Property Type	Offices
Building Area	24 m2

**Tom Xenakis 0419 353 353**  
Director | [tom@ljhstrathfield.com.au](mailto:tom@ljhstrathfield.com.au)

**LJ Hooker Strathfield (02) 9746 2222**  
2 Albert Road, STRATHFIELD NSW 2135  
[strathfield.ljhooker.com.au](http://strathfield.ljhooker.com.au) | [info@ljhstrathfield.com.au](mailto:info@ljhstrathfield.com.au)

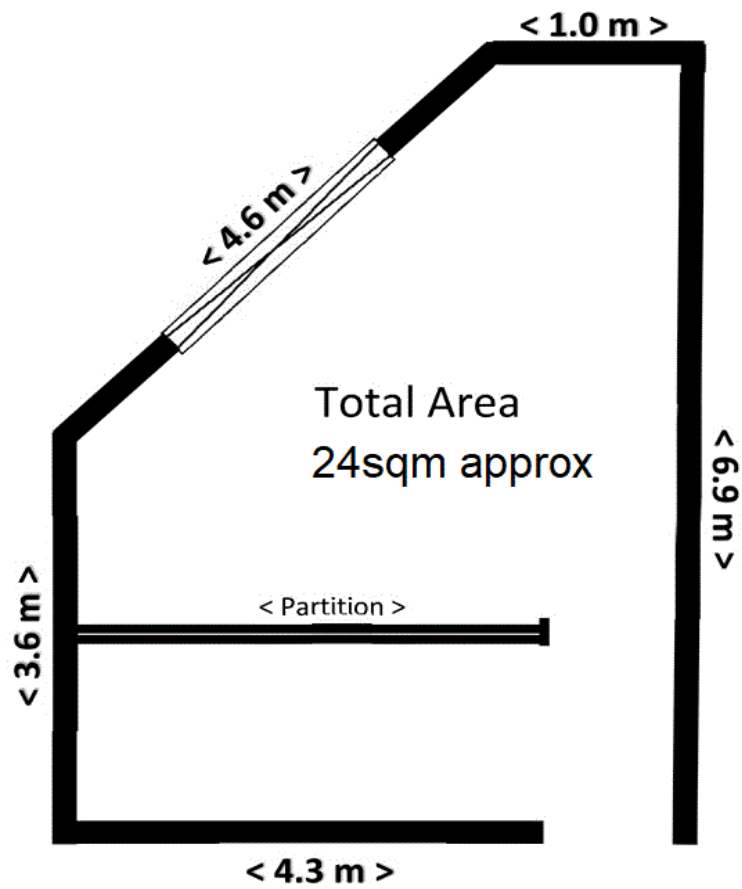


DISCLAIMER: This is for illustrative purposes only. All dimensions are approximate and it does not constitute part of any legal documents. Address: **2 Albert Road, Strathfield**



**LJ Hooker Strathfield**  
**(02) 9746 2222**

**Disclaimer:** All information contained therein is gathered from relevant third parties sources. We cannot guarantee or give any warranty about the information provided. Interested parties must rely solely on their own enquiries.



DISCLAIMER: This is for illustrative purposes only. All dimensions are approximate and it does not constitute part of any legal documents.

Address:

**Suite A/2 Albert Road, Strathfield**