

Stepney, 128-134 Payneham Road

High-Profile Investment Opportunity on Payneham Road

Key Attributes:

- Combined Land Area: 1,360 sqm*
- Combined Build Area: 960m2*
- 4 established tenants across two titles
- On-Site Parking, enhancing accessibility
- High Street Exposure with exposure to 34,500 vehicles daily*
- Location: 4km* from Adelaide GPO
- Zoned: Suburban Activity Centre
- Council: City or Norwood, Payneham & St Peters
- Development Potential (STCA)

Investment Opportunity:

This property presents an ideal opportunity for savvy investors seeking a combination of steady rental income and long-term growth potential. With four tenanted spaces, it

For Sale

Contact Agent

Building Area

960sqm

Contact

Fendi Klementou

0426 258 030

fendi.klementou@ljhcommercialadelaide.com.au

Mario Bonomi

0412 080 993

mario.bonomi@ljhcommercialadelaide.com.au



Adelaide

(08) 8232 8844

Disclaimer: All information contained therein is gathered from relevant third parties sources.

We cannot guarantee or give any warranty about the information provided. Interested parties must rely solely on their own enquiries.

provides immediate cash flow and a secure financial return. The off-street parking and its strategic location just 4km from the heart of Adelaide ensure its appeal to both tenants and future developers.

Future Development Potential:

Situated on a generous 1,360 sqm land holding, this site is ripe for future redevelopment (STCA). Whether you're looking to benefit from on the current commercial use or explore residential, retail, or mixed-use development, this site offers endless possibilities. Its high exposure and proximity to the Adelaide GPO, making it an attractive acquisition for a range of investors.

Inspection Times:

Wednesday 23rd October at 3:45pm

For further information please contact Mario Bonomi on 0412 080 993 or Fendi Klementou on 0426 258 030.

*Approximately.

RLA 231015

More About this Property

Property ID	8AMH94
Property Type	Offices
Building Area	960 m2
Land Area	1360 m2

Fendi Klementou 0426 258 030

Sales & Leasing - Commercial | fendi.klementou@ljhcommercialadelaide.com.au

Mario Bonomi 0412 080 993

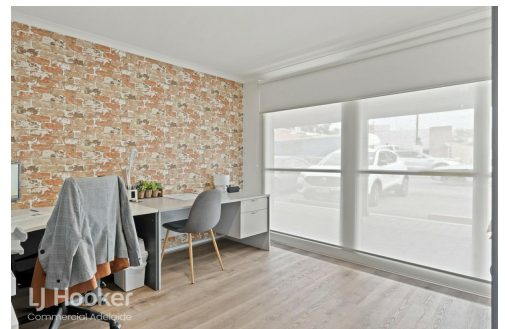
Principal | mario.bonomi@ljhcommercialadelaide.com.au

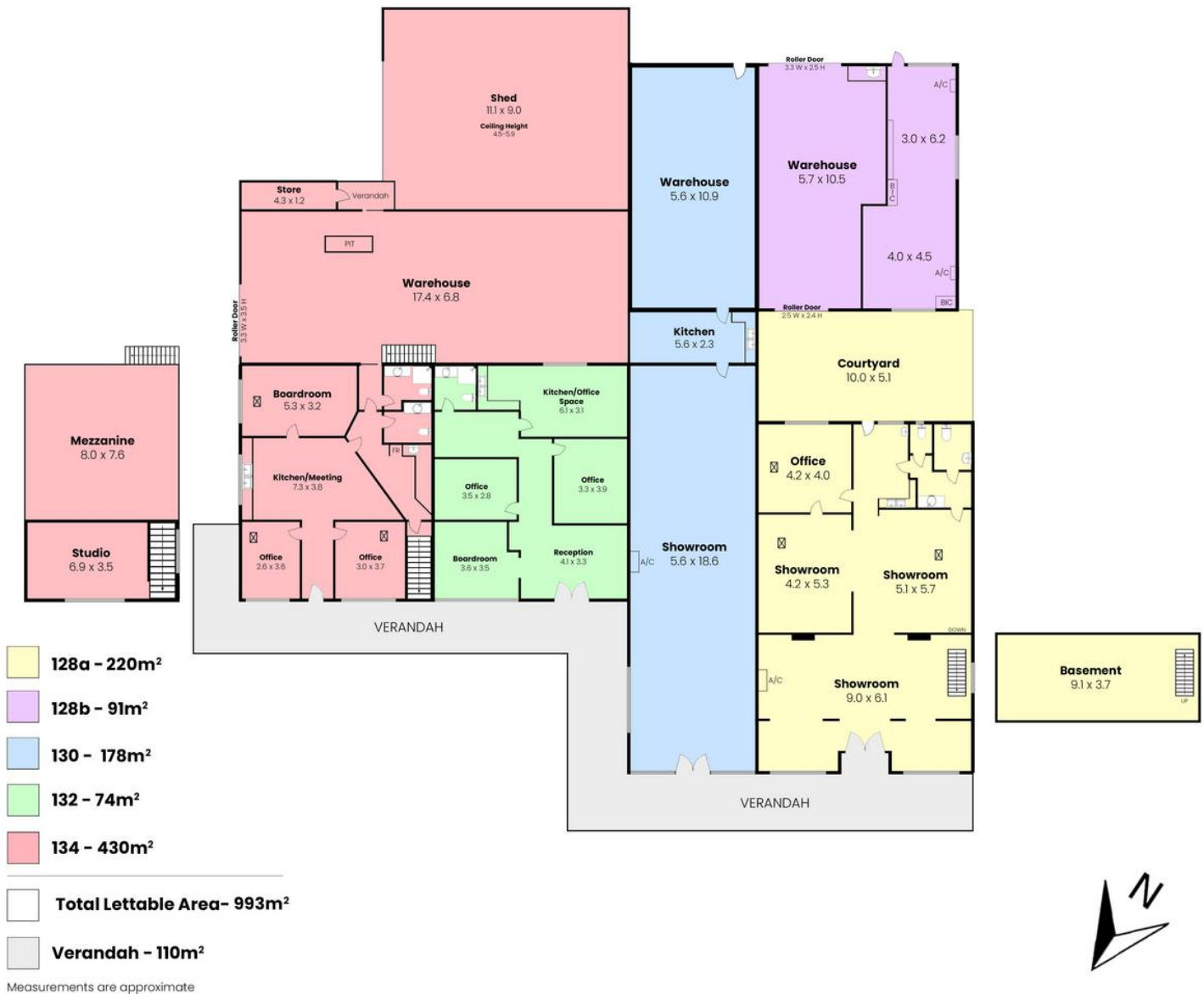
Adelaide (08) 8232 8844

81 Flinders Street, ADELAIDE SA 5000

adelaide.ljhcommercial.com.au |

commercialadelaide@ljhcommercialadelaide.com.au





LJ Hooker
Commercial Adelaide

128 - 134 Payneham Road, Stepney SA 5069

Disclaimer: The information & figures obtained within this document has been compiled from information provided by vendor & sources that we believe are reliable. No warranty is given to their accuracy & all figures are subject to change without notice.

LJ Hooker Commercial

Adelaide
(08) 8232 8844

Disclaimer: All information contained therein is gathered from relevant third parties sources. We cannot guarantee or give any warranty about the information provided. Interested parties must rely solely on their own enquiries.