



3 Lyrebird Ridge Road, Springbrook

## Gold Coasts Most Iconic Fudge Shop! First Time to Market in Nearly 50 Years

Rich in history, this remarkable property was home to Springbrook's first two-story building, constructed in 1932. Over the decades, it has served many purposes - from a potato and dairy farm, a mechanic's workshop, a family home, and a recording studio, to a Fudge Shop established in 2000.

Situated at the heart of Springbrook on an 8,498 sqm block, this property is zoned Township —Commercial Precinct, offering endless possibilities for development, business, or lifestyle ventures. It also borders Eaglemont Farm, purchased by the Gold Coast City Council in 2024 and earmarked for eco-tourism development, adding further potential and long-term value.

Owned by the same family for nearly 50 years, this rare offering combines history, versatility, and prime positioning.

### Key Features:

- 8,498 sqm usable block
- Prime corner location at Springbrook Road and Lyrebird Ridge Road

### FOR SALE

Expressions of Interest

### BUILDING AREA

140sqm

### AGENTS

Roelien Powell  
0420 664 690  
roelien@ljhgcp.com.au

Jessica Powell  
Mudgeeraba@ljhgcp.com.au

### AGENCY

LJ Hooker Mudgeeraba  
07 5530 6000

All information contained therein is gathered from relevant third parties sources. We cannot guarantee or give any warranty about the information provided. Interested parties must rely solely on their own enquiries.



- Bordering Eaglemont Farm, earmarked for eco-tourism by Gold Coast City Council
- 3-bedroom, double-story home built in 1932
- Separate outdoor kitchen, ideal for markets or events
- Covered outdoor seating area, previously a carport
- Includes the current fudge shop business and its well-known fudge
- Water tank and septic system
- Ample off-road parking
- Large grassed areas with established trees

It had a DA approval for more retail shops and a restaurant that has recently lapsed.

This property offers a once-in-a-lifetime opportunity for buyers seeking a historic, versatile, and commercially zoned property in Springbrook. Don't miss your chance to own a piece of local history and unlock the endless potential this unique property offers.

## MORE DETAILS

Property ID	CGJ15
Property Type	Land/Development
	Retail
	Other
Building Area	140 m2
Land Area	8498 m2

### Roelien Powell 0420 664 690

Principal Licensee / Sales Specialist | [roelien@ljhgcp.com.au](mailto:roelien@ljhgcp.com.au)

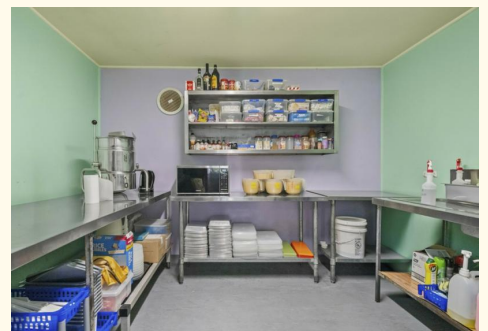
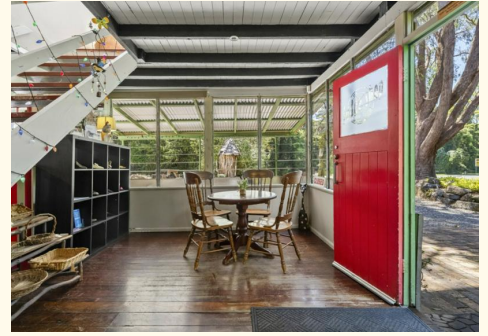
### Jessica Powell

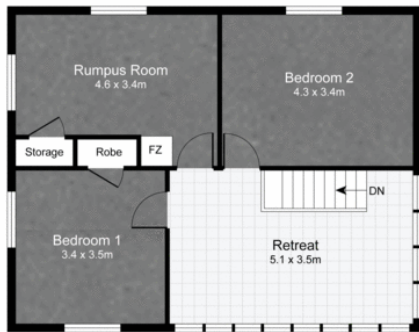
Office Manager / Sales Specialist | [mudgeeraba@ljhgcp.com.au](mailto:mudgeeraba@ljhgcp.com.au)

### LJ Hooker Mudgeeraba 07 5530 6000

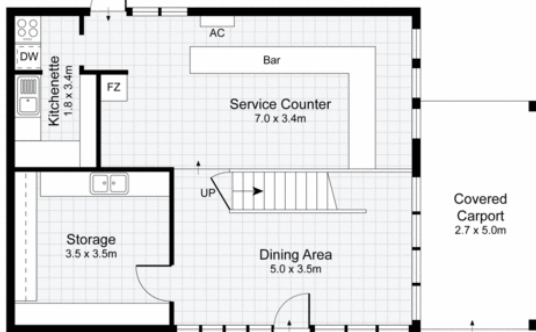
1/58 Railway Street, MUDGEERABA QLD 4213

[mudgeeraba.ljhooker.com.au](http://mudgeeraba.ljhooker.com.au) | [mudgeeraba@ljhgcp.com.au](mailto:mudgeeraba@ljhgcp.com.au)

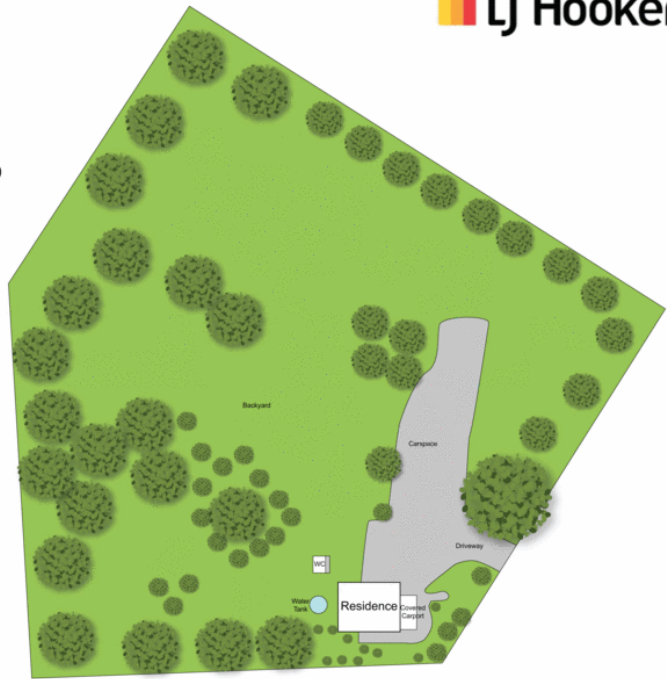




First Floor



Ground Floor



Site Plan

3 LYREBIRD RIDGE ROAD, SPRINGBROOK QLD 4213, AUSTRALIA



2 0.5 6

Land Size: 8494m<sup>2</sup> | Internal: 126m<sup>2</sup> | External: 14m<sup>2</sup> | Total: 140m<sup>2</sup>

Scale in meters. Indicative only. Dimensions are approximate. All information contained herein is gathered from sources we believe to be reliable. However, we cannot guarantee its accuracy and interested persons should rely on their own enquiries.