

13/105 Scarborough Street



13/105 Scarborough Street, Southport

3 MONTHS RENT FREE. PRIME SOUTHPORT RETAIL / FOOD TENANCY

Take advantage of 3 months rent free and secure this exceptional tenancy in the heart of the Southport CBD.

Located within the landmark Nexus Towers, this ground-floor space is ideal for hospitality or retail operators wanting maximum exposure and foot traffic.

Highlights:

- " 112m² total area
- Built-in cold room and walk-in freezer (owner happy to remove if required)
- Positioned within a thriving mixed-use development with two high-rise towers
- Neighbouring Gold Coast TAFE, Australia Fair, and the

FOR LEASE
Contact Agent

BUILDING AREA
112sqm

AGENTS

Elle Osborne
0410 992 602
eosborne.southport@ljhooker.com.au

AGENCY

LJ Hooker Southport
(07) 5591 5222

All information contained therein is gathered from relevant third parties sources. We cannot guarantee or give any warranty about the information provided. Interested parties must rely solely on their own enquiries.



Courthouse

- Steps to the Light Rail, Broadwater Parklands, and major training institutions
- High-traffic location surrounded by thousands of residents and workers

Perfectly suited for food, beverage, or convenience retail operators ready to establish or expand their business in Southport's busiest growth precinct.

Disclaimer: Whilst every effort has been made to ensure the accuracy of the information above, no warranty is given by the vendor or agent as to its accuracy. Interested parties should not rely on this information as statements or representations of fact and must satisfy themselves by inspection or otherwise.

MORE DETAILS

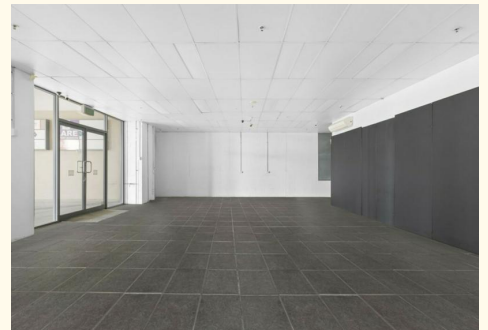
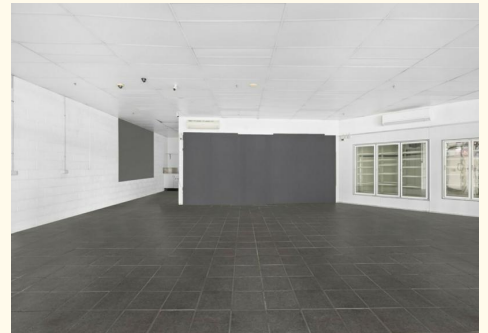
Property ID	10B8F4K
Property Type	Retail
Building Area	112 m2
Outgoings	\$23,261.00

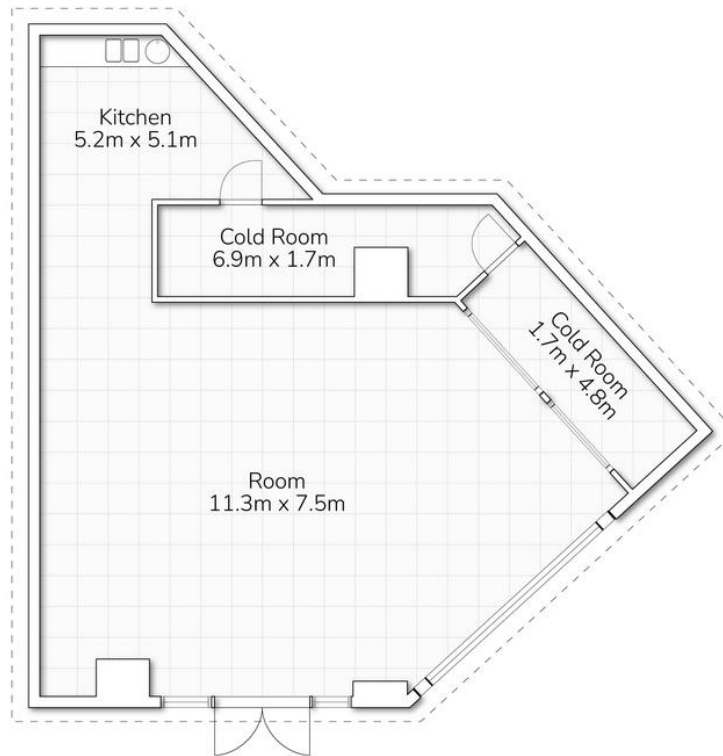
Elle Osborne 0410 992 602

Business Development Manager |
eosborne.southport@ljhooker.com.au

LJ Hooker Southport (07) 5591 5222

2308-2309 Level 3 Southport Central, Tower 2, 5 Lawson Street,
SOUTHPORT QLD 4215
southport.ljhooker.com.au | southport@ljhooker.com.au





13/105 SCARBOROUGH STREET, SOUTHPORT

Internal 98m² | External 10m² | Total 108m²

This floor plan is for marketing purposes only. Dimensions and layout are approximate. Mountfort Media gives no guarantee or warranty over the accuracy of this plan.