



South Maitland, 43 Louth Park Road

Prime Commercial Space for Lease —Perfect for Your Growing Business!

Looking for the ideal location to take your business to the next level? This versatile shop front offers multiple office spaces, or consultation rooms providing the perfect setup for a small business looking to take those important next steps! With ample parking for staff and customers, convenience is key!

Located in a high-traffic area, the exposure here is A Garde & this space is ideal for professional services, retail, or creative enterprises. Don't miss out on this opportunity to establish your business in a thriving location.

Proudly marketed by LJ Hooker Maitland, please call exclusive agents Todd Fisher 0438 592 920 or Ben Cotton 0434 638 822 - 7 days for all inspections & further information.

All information contained herein is gathered from sources we deem to be reliable.



Disclaimer: All information contained therein is gathered from relevant third parties sources. We cannot guarantee or give any warranty about the information provided. Interested parties must rely solely on their own enquiries.

For Lease

\$20,000 P.A plus Outgoings

Building Area

450sqm

Contact

Todd Fisher

0438 592 920

tfisher.maitland@ljhooker.com.au

LJ Hooker Maitland
(02) 4933 5511

However, we cannot guarantee its accuracy and interested persons should rely on their own enquiries.

More About this Property

Property ID	1DZ4F6H
Property Type	Retail
Building Area	450 m ²
Land Area	705 m ²

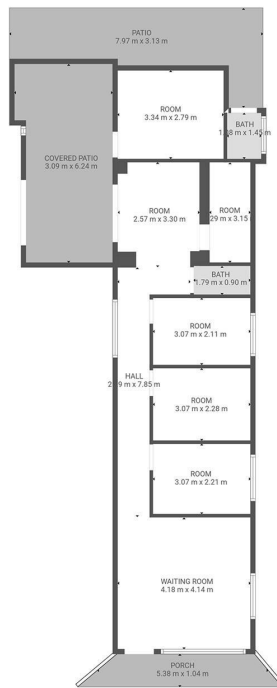
Todd Fisher 0438 592 920
Principal/Licensee in Charge | tfisher.maitland@ljhooker.com.au

LJ Hooker Maitland (02) 4933 5511
24 Ken Tubman Drive, MAITLAND NSW 2320
maitland.ljhooker.com.au | maitland@ljhooker.com.au



Disclaimer: All information contained therein is gathered from relevant third parties sources.
We cannot guarantee or give any warranty about the information provided. Interested parties must rely solely on their own enquiries.

LJ Hooker Maitland
(02) 4933 5511



TOTAL: 65 m²
FLOOR 1: 65 m²
**EXCLUDED AREAS: COVERED PATIO: 18 m², PATIO: 15 m², PORCH: 6 m²,
 ROOM: 9 m², BATH: 2 m²**

FLOOR PLAN

43 Louth Park Rd
 South Maitland

DISCLAIMER: Plans shown are for presentation purposes only and not part of any legal document or title.
 They are subject to errors, omissions, inaccuracies and should not be used as a sole and accurate reference.
 Interested parties should make their own inquiries using independent sources.

LJ Hooker
 Maitland

LJ Hooker

LJ Hooker Maitland
(02) 4933 5511

Disclaimer: All information contained therein is gathered from relevant third parties sources.
 We cannot guarantee or give any warranty about the information provided. Interested parties must rely solely on their own enquiries.