

Smithfield, 4/2 Anderson Walk

Excellent Retail/Office Space

LJ Hooker Commercial Adelaide are pleased to present Shop 4, 2 Anderson Walk, Smithfield to the market for Lease.

This well positioned tenancy on the corner of Anderson Walk & Queen Street. Offers a great opportunity to join a complementary mix of tenants.

- 122 sqm*
- Close proximity to Munno Para Shopping City, Smithfield Civic Park, the Smithfield Hotel and the developing Curtis Road commercial precinct
- Shared on-site Parking
- Exclusive shared bathroom and kitchen facilities
- High exposure area

For further information or to organise an inspection please contact Mark Tettis 0433 139

For Lease
Contact Agent

Building Area
122sqm

Contact
Mark Tettis
0433 139 892
mark.tettis@ljhcommercialadelaide.com.au

John Zavos
0414 229 211
john.zavos@ljhcommercialadelaide.com.au



Adelaide
(08) 8232 8844

Disclaimer: All information contained therein is gathered from relevant third parties sources. We cannot guarantee or give any warranty about the information provided. Interested parties must rely solely on their own enquiries.

892 or John Zavos 0414 229 211.

RLA 231 015

* approx

** All information provided has been obtained from sources we believe to be accurate, however, we cannot guarantee the information is accurate and we accept no liability for any errors or omissions (including but not limited to a property's land size, floor plans and size, building age and condition). Interested parties should make their own enquiries and obtain their own legal advice.

More About this Property

Property ID	8C4H94
Property Type	Offices
Building Area	122 m2

Mark Tettis 0433 139 892

Sales & Leasing - Commercial | mark.tettis@ljhcommercialadelaide.com.au

John Zavos 0414 229 211

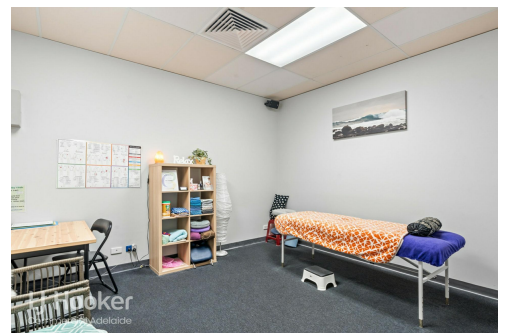
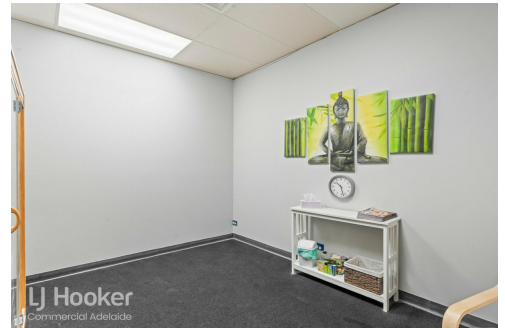
Sales & Leasing - Commercial | john.zavos@ljhcommercialadelaide.com.au

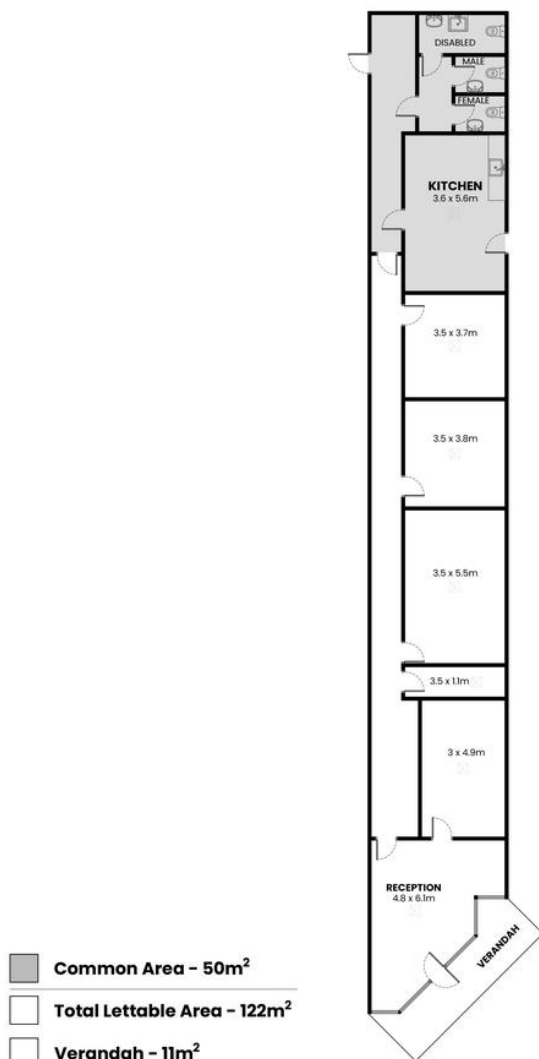
Adelaide (08) 8232 8844

81 Flinders Street, ADELAIDE SA 5000

adelaide.ljhcommercial.com.au |

commercialadelaide@ljhcommercialadelaide.com.au





LJ Hooker
Commercial Adelaide

4/2 Anderson Walk, Smithfield SA 5114

Disclaimer: The information & figures obtained within this document has been compiled from information provided by vendor & sources that we believe are reliable. No warranty is given to their accuracy & all figures are subject to change without notice.