

Royston Park, Shops 3 & 4/297 Payneham Road

Prime Exposure —Your Space, Your Choice!

*187 sqm of Possibilities!!

*Take One or Take Them Both! The ultimate flexibility —whether you're after a single space or an expansive setup, the choice is yours!

*Generous Floor Space that adapts to your vision —perfect for retail, food ventures, or professional services.

*Ample On-Site Parking —Convenience for your customers, so no hassle, just easy access.

Ready to elevate your business? Whether it's a bustling retail or office space, this is where great things happen!

To arrange an inspection or for further information please contact Claude Buccella on 0419 394 110 or Anton Faranda on 0401 818 436.

For Lease
Contact Agent

Building Area
187sqm

Contact
Claude Buccella
0419 394 110
claude.buccella@ljhadelaidemetro.com.au
Anton Faranda
0401 818 436
anton.faranda@ljhcommercialadelaide.com.au



Disclaimer: All information contained therein is gathered from relevant third parties sources. We cannot guarantee or give any warranty about the information provided. Interested parties must rely solely on their own enquiries.

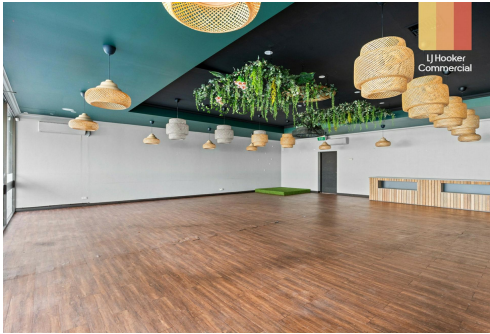
Adelaide
(08) 8232 8844

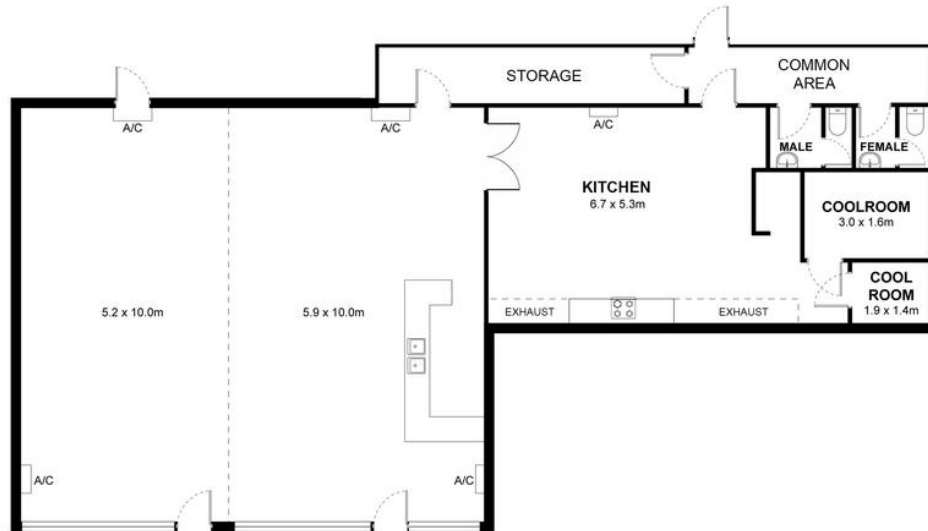
More About this Property

Property ID	8FBH94
Property Type	Retail
Building Area	187 m2

Claude Buccella 0419 394 110
Principal | claudio.buccella@ljhadelaidemetro.com.au
Anton Faranda 0401 818 436
Commercial Property Management |
anton.faranda@ljhcommercialadelaide.com.au

Adelaide (08) 8232 8844
81 Flinders Street, ADELAIDE SA 5000
adelaide.ljhcommercial.com.au |
commercialadelaide@ljhcommercialadelaide.com.au





 Total Lettable Area - 187m²



Shops 3 & 4, 297 Payneham Road, Royston Park, SA 5070

Disclaimer: The information & figures obtained within this document has been compiled from information provided by vendor & sources that we believe are reliable. No warranty is given to their accuracy & all figures are subject to change without notice.