



2 Curtis Street, Redwood

## 315m<sup>2</sup> of Prestigious Office Accommodation - Horton House~

LJ Hooker Commercial Toowoomba is pleased to present Horton House, offered to the leasing market for the first time in over 15 years. Located at 2 Curtis Street, Redwood, this 315m<sup>2</sup> character office\* provides a rare opportunity to secure a beautifully appointed workspace in one of Toowoomba's most sought-after blue-chip locations.

Elevated on the scenic Redwood ridge, Horton House delivers an uplifting and inspiring professional environment, combining breathtaking views, soft natural light, and timeless character throughout. Its unique position offers the ideal balance of central connectivity and remarkable privacy perfect for teams seeking comfort, charm, and convenience in a truly premium setting.

### Our Differences

- " 315m<sup>2</sup> of character office space with functional layout in place.
- Stunning elevated views across the Range and surrounding escarpment
- Bright, airy interiors with excellent natural light throughout

### FOR LEASE

Contact Agent

### BUILDING AREA

315sqm

### AGENTS

Christopher Stewart  
0451 948 001  
cstewart@ljht.com.au

### AGENCY

Toowoomba  
(07) 4688 2222

All information contained therein is gathered from relevant third parties sources. We cannot guarantee or give any warranty about the information provided. Interested parties must rely solely on their own enquiries.

 LJ Hooker Commercial

- Generous on-site parking with easy access for staff and visitors
- Landscaped surrounds and a peaceful setting that enhances productivity
- Convenient location only minutes to Toowoomba CBD, Range Shopping Centre, St Vincent's Hospital and major arterials
- Prominent corner position offering strong signage exposure
- Ideal for professional services, medical/allied health, consultancy or creative businesses seeking a unique office environment

For more information, contact exclusive marketing agent Chris Stewart on 0451 948 001.

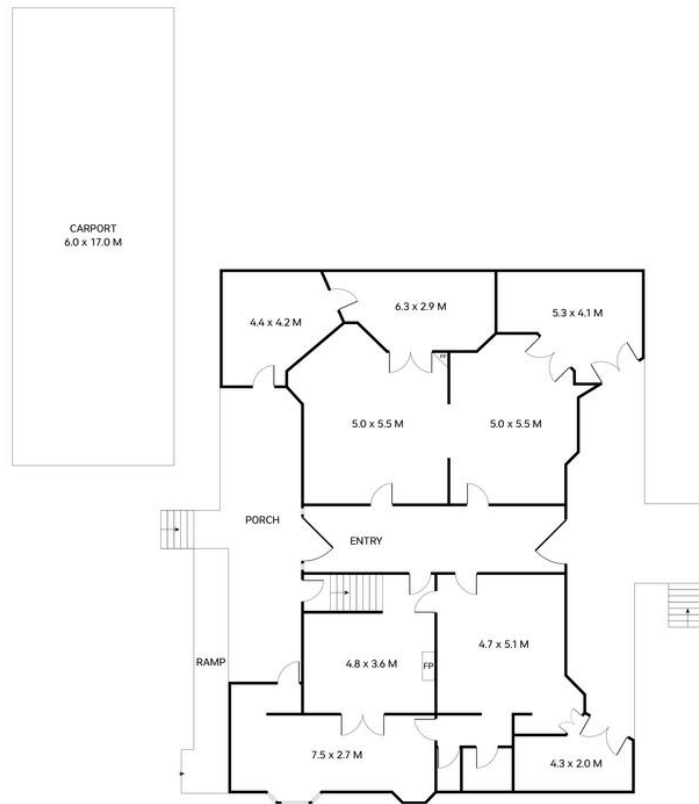
## MORE DETAILS

Property ID	10M5G6F
Property Type	Offices
Building Area	315 m2

**Christopher Stewart 0451 948 001**  
 Managing Director | [cstewart@ljht.com.au](mailto:cstewart@ljht.com.au)

**Toowoomba (07) 4688 2222**  
 Level 1, 677-683 Ruthven Street, TOOWOOMBA QLD 4350  
[toowoomba.ljhcommercial.com.au](http://toowoomba.ljhcommercial.com.au) | [toowoomba@ljhtc.com.au](mailto:toowoomba@ljhtc.com.au)





Total: 315m<sup>2</sup>

2 Curtis Street  
Redwood



This plan is for representational purposes only. All dimensions are approximate and shouldn't be solely relied upon.  
Floorplan created by Vue Digital.