

Payneham South, 102 Portrush Road

Premium Medical Suite Available in East End

LJ Hooker Commercial Adelaide is pleased to present 102 Portrush Road, Payneham—an outstanding leasing opportunity in Adelaide's sought-after eastern corridor. Comprising five versatile rooms, well-maintained amenities, and convenient on-site parking, this property offers both functionality and appeal. Its prime frontage ensures exceptional exposure to the high-traffic Portrush Road, adding further value to this impressive offering.

Key Points:

- Five spacious main rooms
- Impressive reception area —perfect for welcoming clients
- Ample onsite parking —7 dedicated car parks
- Fully self-contained with kitchen facilities
- Total building area of approx. 190sqm
- 18.29m frontage to Portrush Road —maximum exposure to high-volume traffic

For Lease
Contact Agent

Building Area
166sqm

Contact
Mario Bonomi
0412 080 993
mario.bonomi@ljhcommercialadelaide.com.au

Brooke Stead
0404 226 919
commercialadelaide@ljhcommercialadelaide.com.au



Disclaimer: All information contained therein is gathered from relevant third parties sources. We cannot guarantee or give any warranty about the information provided. Interested parties must rely solely on their own enquiries.

Adelaide
(08) 8232 8844

For more information or to arrange an inspection please do not hesitate to contact Mario Bonomi on 0412 080 993 or Brooke Stead on 0404 226 919.

RLA 231 015

More About this Property

Property ID	8DHH94
Property Type	Medical/Consulting
Building Area	166 m2
Land Area	713 m2

Mario Bonomi 0412 080 993

Principal | mario.bonomi@ljhcommercialadelaide.com.au

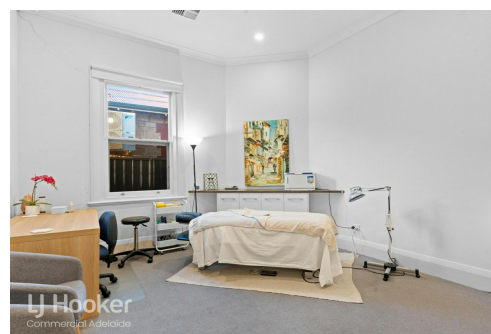
Brooke Stead 0404 226 919

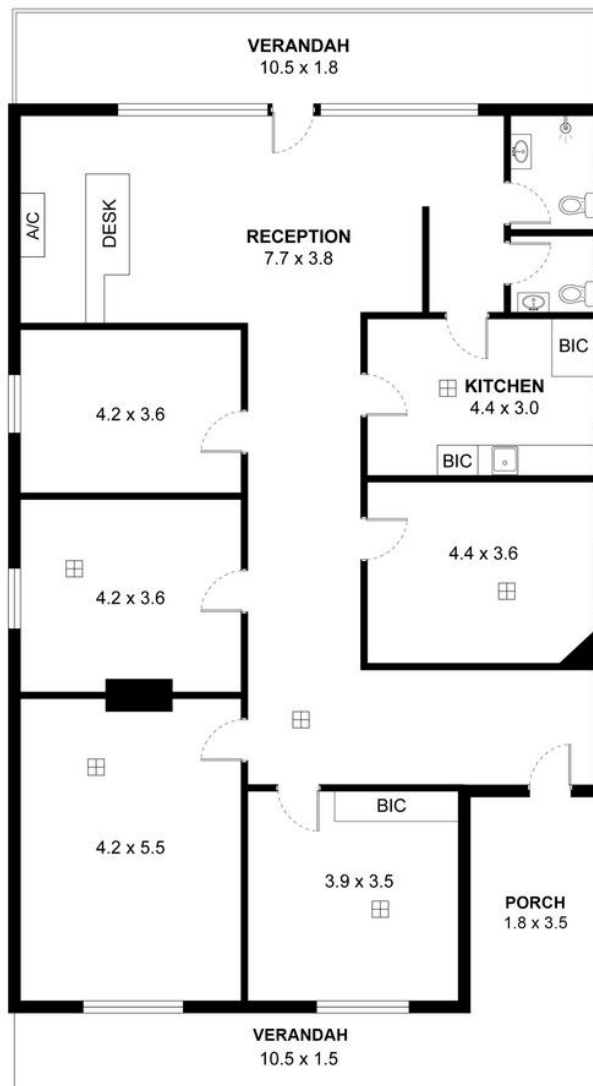
Sales & Leasing - Commercial / BSO | commercialadelaide@ljhcommercialadelaide.com.au

Adelaide (08) 8232 8844

81 Flinders Street, ADELAIDE SA 5000

adelaide.ljhcommercial.com.au | commercialadelaide@ljhcommercialadelaide.com.au





 **Total Lettable Area - 166m²**

 **Verandahs/Porch - 41m²**

Measurements are approximate

LJ Hooker
Commercial Adelaide

102 Portrush Road, Payneham South SA 5070

Disclaimer: The information & figures obtained within this document has been compiled from information provided by vendor & sources that we believe are reliable. No warranty is given to their accuracy & all figures are subject to change without notice.

 **LJ Hooker Commercial**

Adelaide
(08) 8232 8844

Disclaimer: All information contained therein is gathered from relevant third parties sources. We cannot guarantee or give any warranty about the information provided. Interested parties must rely solely on their own enquiries.