



Paradise, Level 1/683 Lower North East Road

LIFT TO BE INSTALLED - Prime Commercial Space in Paradise

LJ Hooker Commercial Adelaide are proud to present to the market for Lease Level 1 / 693 Lower North East Road, Paradise.

Prime elevated position at a high exposure intersection. The property offers unparalleled and adaptable office space with a high quality fit out throughout. Located on the corner of Lower North East Road and Darley Road allowing for easy access to the broader Adelaide area.

Key features of the property include:

- High quality construction
- Bathroom and shower facilities
- Adaptable floor plan



Disclaimer: All information contained therein is gathered from relevant third parties sources. We cannot guarantee or give any warranty about the information provided. Interested parties must rely solely on their own enquiries.

For Lease
Contact Agent

Building Area
400sqm

Contact
Rino Pancione
0417 822 987
rino.pancione@ljhcommercialadelaide.com.au

Mark Tettis
0433 139 892
mark.tettis@ljhcommercialadelaide.com.au

Adelaide
(08) 8232 8844

- Excellent signage and branding opportunities
- Exposure to in excess of 70,000* cars daily
- Accompanied on the ground floor by Beaumont Tiles and Poetry Indian Restaurant
- Ample on-site parking
- 400 sqm* of lettable area

To arrange an inspection please contact Rino Pancione 0417 822 987 or Mark Tettis 0433 139 892.

RLA 231 015

More About this Property

Property ID	89DH94
Property Type	Offices
Building Area	400 m2

Rino Pancione 0417 822 987

Principal | rino.pancione@ljhcommercialadelaide.com.au

Mark Tettis 0433 139 892

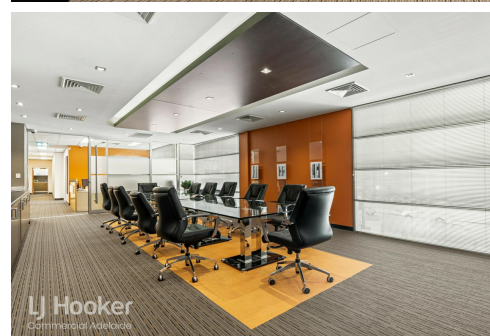
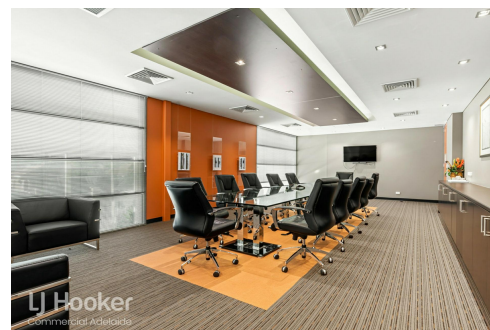
Sales & Leasing - Commercial | mark.tettis@ljhcommercialadelaide.com.au

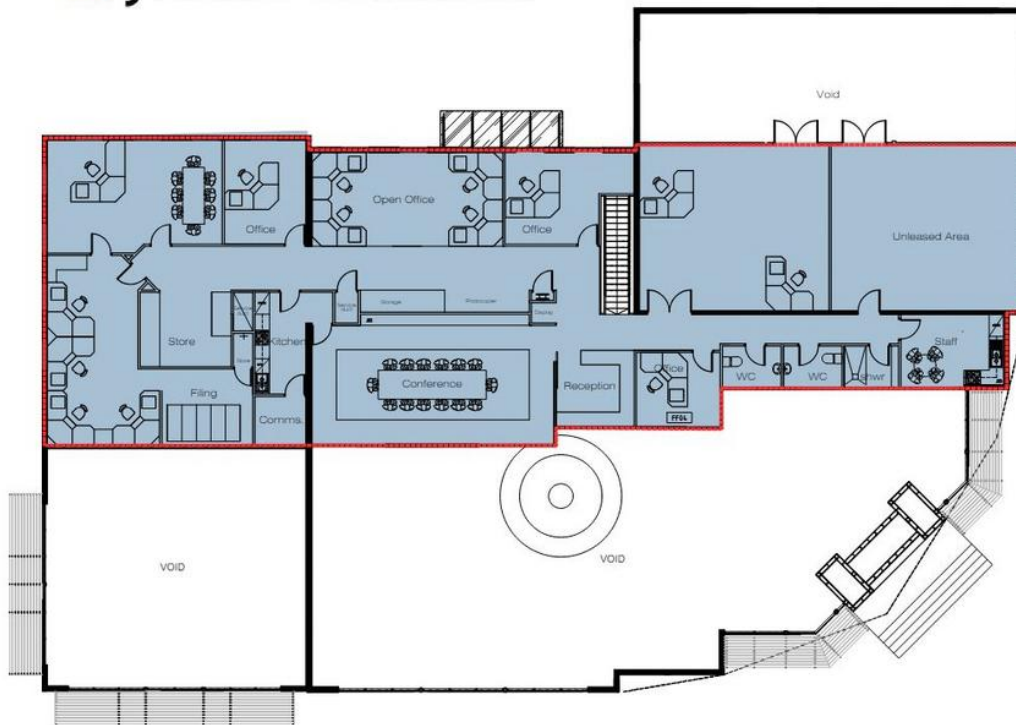
Adelaide (08) 8232 8844

81 Flinders Street, ADELAIDE SA 5000

adelaide.ljhcommercial.com.au |

commercialadelaide@ljhcommercialadelaide.com.au





First Floor



Lettable Area: 400 sqm*

*approx.