



95 Beulah Road, Norwood

Brilliance on Beulah Road Norwood

95 Beulah Road Norwood, 5067

- 643sqm* site
- Fully renovated office of 125sqm* plus 7sqm* cellar
- Significant further development potential (STCC)
- Zoned Business Neighbourhood

Opportunities in this tightly held commercial pocket are rare. Whether you're an owner-occupier looking to elevate your business presence or an investor seeking strong rental demand in a blue-chip suburb, 95 Beulah Road, Norwood delivers on location, flexibility, and future growth.

Flexible floorplan suitable for office, consulting, or retail use
Professional presentation with restored traditional finishes and modern conveniences

- site parking and convenient customer access

Excellent signage opportunities

Strong surrounding mix of retail, hospitality & professional services.

For sale by Private Treaty.

Mario Bonomi 0412 080 993

Jo Chapley 0403 056 889

LJHooker Commercial Adelaide

FOR SALE
Contact Agent

BUILDING AREA
132sqm

AGENTS

Mario Bonomi
0412 080 993

mario.bonomi@ljhcommercialadelaide.com.au

Joanne Chapley
0403 056 889

jo.chapley@ljhcommercialadelaide.com.au

AGENCY

Adelaide
(08) 8232 8844

All information contained therein is gathered from relevant third parties sources.
We cannot guarantee or give any warranty about the information provided.
Interested parties must rely solely on their own enquiries.

 **LJHooker Commercial**

RLA: 231015

MORE DETAILS

Property ID	8JXH94
Property Type	Offices Medical/Consulting Other
Building Area	132 m2

Mario Bonomi 0412 080 993

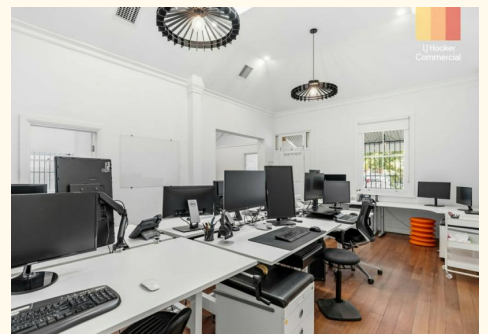
Principal | mario.bonomi@ljhcommercialadelaide.com.au

Joanne Chapley 0403 056 889

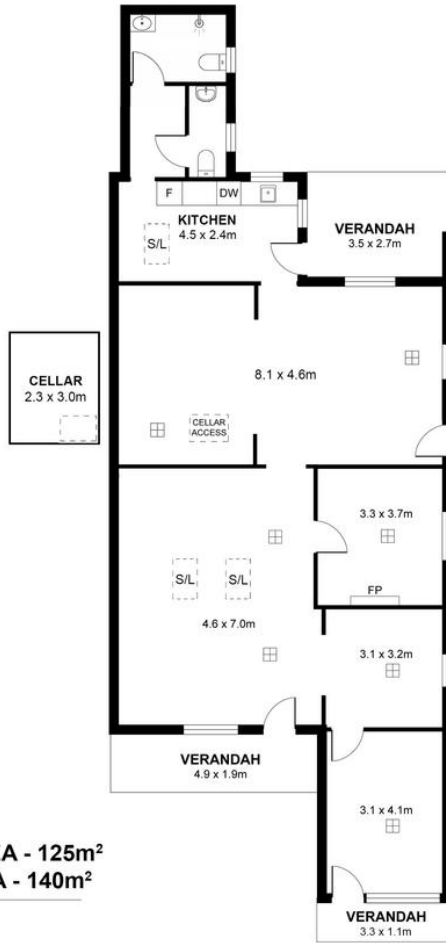
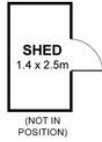
Commercial Sales & Leasing |
jo.chapley@ljhcommercialadelaide.com.au

Adelaide (08) 8232 8844

81 Flinders Street, ADELAIDE SA 5000
adelaide.ljhcommercial.com.au |
commercialadelaide@ljhcommercialadelaide.com.au



All information contained therein is gathered from relevant third parties sources.
We cannot guarantee or give any warranty about the information provided.
Interested parties must rely solely on their own enquiries.



NET LETTABLE AREA - 125m²
GROSS BUILD AREA - 140m²
 Cellar - 7m²
 Verandahs - 13m²
 Shed - 3m²

Measurements are approximate



95 Beulah Road, Norwood, SA 5067

Disclaimer: The information & figures obtained within this document has been compiled from information provided by vendor & sources that we believe are reliable. No warranty is given to their accuracy & all figures are subject to change without notice.