

Norwood, 231 The Parade

SOPHISTICATED ELEGANCE WITH RARE CHARACTER CHARM

Step into a world where historic charm meets contemporary elegance at Ground Floor, 231 The Parade, Norwood.

This stunning, recently renovated character building is located in the vibrant inner-eastern suburb of Norwood, just 3km from the Adelaide CBD.

With a generous build area of a spacious 379 sqm, this property seamlessly combines the allure of yesteryear with the conveniences of today.

Bathed in an abundances of natural light beaming through the arched windows along the facade and atrium located in the centre of the property.

Key Features:

- Build Area: Spacious 379 sqm*
- On-Site, Rear Parking (from Wesley Lane)
- 3km from Adelaide CBD, offering excellent accessibility

For Lease
Contact Agent

Building Area
379sqm

Contact
Joanne Chapley
0403 056 889
jo.chapley@ljhcommercialadelaide.com.au

Mark Tettis
0433 139 892
mark.tettis@ljhcommercialadelaide.com.au



Adelaide
(08) 8232 8844

Disclaimer: All information contained therein is gathered from relevant third parties sources. We cannot guarantee or give any warranty about the information provided. Interested parties must rely solely on their own enquiries.

- Prominent frontage along The Parade, Norwood
- Zoned: Urban Corridor (Main Street)

Potential Usages (STCC*):

- Ideal for a child care facility with its spacious layout and central location
- Perfect for consulting rooms, offering a professional and welcoming environment
- Suitable for educational facilities, providing a convenient and accessible location
- Excellent for office accommodation, combining modern amenities with character charm

This property is a rare find, offering a unique opportunity to establish your business in one of Norwood's most sought-after locations.

With its prime position, significant frontage, and versatile zoning, this space is ready to accommodate your business needs and aspirations.

Don't miss out on this exceptional leasing opportunity.

Please contact Jo Chapley on 0403 056 889 or Mark Tettis on 0433 139 892 for more information or to arrange an inspection.

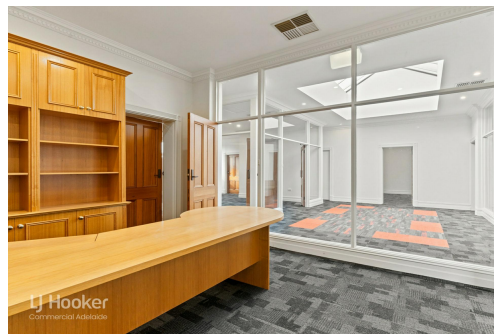
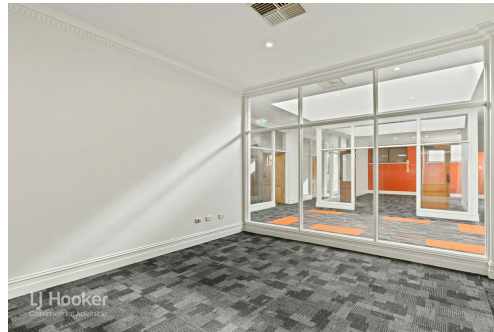
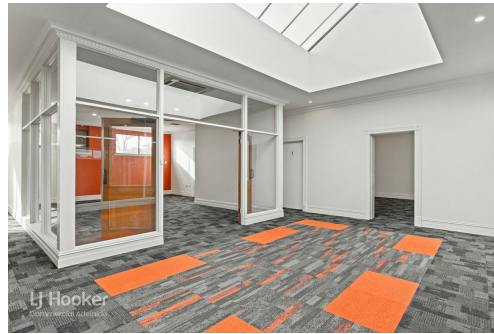
RLA 231015

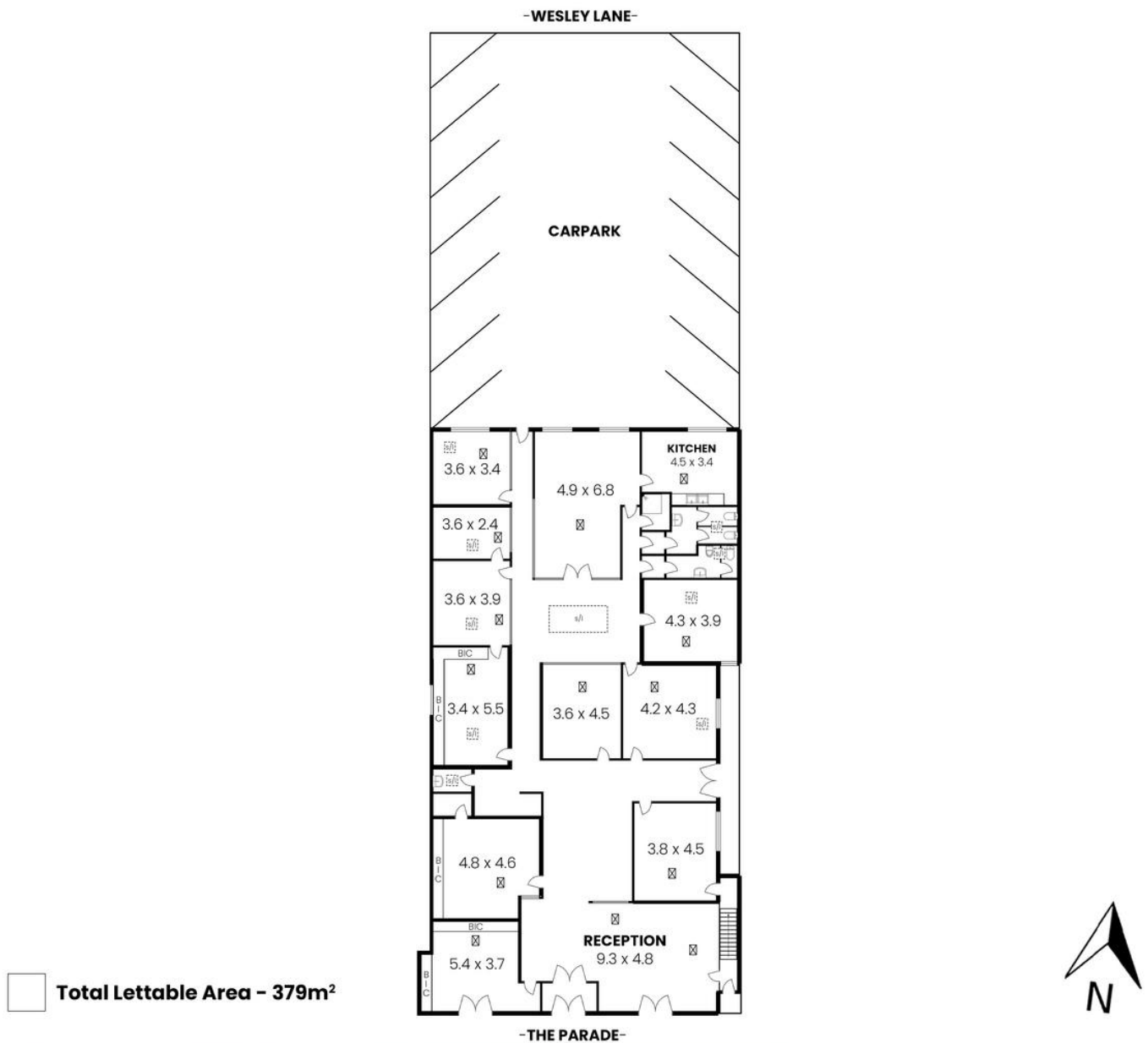
More About this Property

Property ID	89SH94
Property Type	Medical/Consulting
Building Area	379 m2

Joanne Chapley 0403 056 889
 Sales and Leasing â€” Commercial | jo.chapley@ljhcommercialadelaide.com.au
Mark Tettis 0433 139 892
 Sales & Leasing - Commercial | mark.tettis@ljhcommercialadelaide.com.au

Adelaide (08) 8232 8844
 81 Flinders Street, ADELAIDE SA 5000
 adelaide.ljhcommercial.com.au |
 commercialadelaide@ljhcommercialadelaide.com.au





LJ Hooker
Commercial Adelaide

231 The Parade, Norwood SA 5067

Disclaimer: The information & figures obtained within this document has been compiled from information provided by vendor & sources that we believe are reliable. No warranty is given to their accuracy & all figures are subject to change without notice.

LJ Hooker Commercial

Adelaide
(08) 8232 8844

Disclaimer: All information contained therein is gathered from relevant third parties sources. We cannot guarantee or give any warranty about the information provided. Interested parties must rely solely on their own enquiries.