

Mile End South, 37 Sir Donald Bradman Drive

Prime High Exposure Corner Site

LJ Hooker Commercial Adelaide are proud to present 37 Sir Donald Bradman Drive, Mile End South to the market for Lease.

The property presents a rare opportunity to operate in a prime inner-west location 2km* from the CBD and in close proximity to Bunnings Warehouse, Adelaide Airport and the Mile End Homemaker Centre.

Key features:

- 701 sqm*
- Exposure to 30,000* vehicles per day
- Ample off street parking
- 42m* frontage to Sir Donald Bradman Drive



Disclaimer: All information contained therein is gathered from relevant third parties sources. We cannot guarantee or give any warranty about the information provided. Interested parties must rely solely on their own enquiries.

For Lease
Contact Agent

Building Area
701sqm

Contact
Mario Bonomi
0412 080 993
mario.bonomi@ljhcommercialadelaide.com.au

John Zavos
0414 229 211
john.zavos@ljhcommercialadelaide.com.au

Adelaide
(08) 8232 8844

- 3 phase power
- Excellent signage opportunities

For further information or to inspect the property please contact Mario Bonomi 0412 080 993 or John Zavos 0414 229 211.

* approx

** All information provided has been obtained from sources we believe to be accurate, however, we cannot guarantee the information is accurate and we accept no liability for any errors or omissions (including but not limited to a property's land size, floor plans and size, building age and condition). Interested parties should make their own enquiries and obtain their own legal advice.

RLA 231 015

More About this Property

Property ID	8D7H94
Property Type	Showrooms/Bulky Goods
Building Area	701 m2

Mario Bonomi 0412 080 993

Principal | mario.bonomi@ljhcommercialadelaide.com.au

John Zavos 0414 229 211

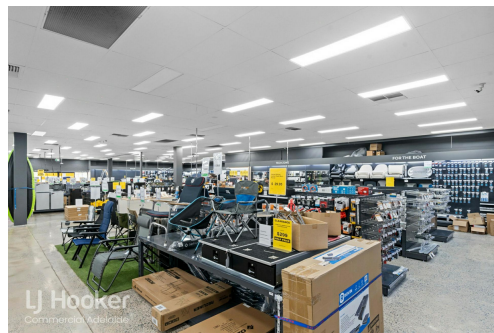
Sales & Leasing - Commercial | john.zavos@ljhcommercialadelaide.com.au

Adelaide (08) 8232 8844

81 Flinders Street, ADELAIDE SA 5000

adelaide.ljhcommercial.com.au |

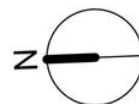
commercialadelaide@ljhcommercialadelaide.com.au





- ☐ Showroom/Retail - 645m²
- ☐ Workshop - 56m²
- ☐ Total Lettable Area - 701m²
- ☐ Verandah - 7m²

Measurements are approximate



LJ Hooker
Commercial Adelaide

37 Sir Donald Bradman Drive, Mile End South SA 5031

Disclaimer: The information & figures obtained within this document has been compiled from information provided by vendor & sources that we believe are reliable. No warranty is given to their accuracy & all figures are subject to change without notice.

 **LJ Hooker Commercial**

Adelaide
(08) 8232 8844

Disclaimer: All information contained therein is gathered from relevant third parties sources. We cannot guarantee or give any warranty about the information provided. Interested parties must rely solely on their own enquiries.