



Masterton, 12 Perry Street

LOCATED TO SUIT

GENEROUS LANDLORD FIT OUT CONTRIBUTION AVAILABLE TO APPROVED TENANT

- * Situated only a few metres from the centre of Masterton's CBD
- * 201m² floor area
- * Large window frontage
- * Light and fresh interior
- * Rear access with two carparks directly behind the building
- * Ample client parking out front plus bonus of two hour free parking almost directly opposite
- * Very realistic gross rent at \$28,275 p.a. plus GST
- * NBS rating of 70%

Call David McHattie or Ben Moorcock to discuss this opportunity.



Disclaimer: All information contained therein is gathered from relevant third parties sources. We cannot guarantee or give any warranty about the information provided. Interested parties must rely solely on their own enquiries.

For Lease

\$28,275

Building Area

201-201sqm

Contact

David McHattie

021 447 041

dmchattie.masterton@ljhooker.co.nz

Ben Moorcock

0274 768 283

bmoorcock.masterton@ljhooker.co.nz

LJ Hooker Masterton

(06) 378 8666

McHattie Realty Ltd MREINZ

More About this Property

Property ID VHFGES

Property Type Offices

Building Area 201-201 m²

Licensed Real Estate Agents (REAA2008)

David McHattie

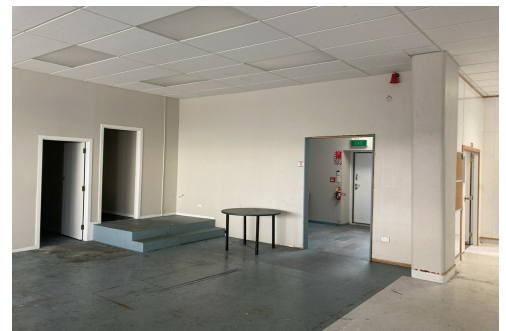
Residential & Commercial Sales Consultant |
dmchattie.masteron@ljhooker.co.nz

Ben Moorcock

Managing Partner & Licensed Sales Specialist |
bmoorcock.masteron@ljhooker.co.nz

LJ Hooker Masterton (06) 378 8666

McHattie Realty Ltd MREINZ
4 Renall Street, MASTERTON 5810
masterton.ljhooker.co.nz | masterton@ljhooker.co.nz

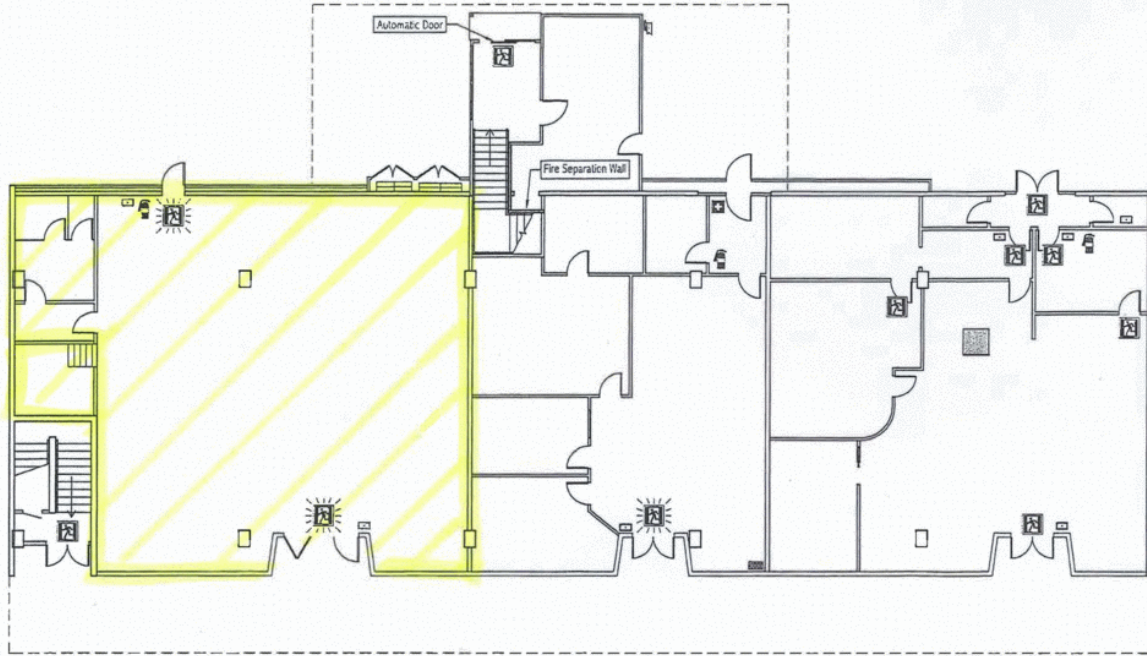


Disclaimer: All information contained therein is gathered from relevant third parties sources. We cannot guarantee or give any warranty about the information provided. Interested parties must rely solely on their own enquiries.

LJ Hooker Masterton
(06) 378 8666

McHattie Realty Ltd MREINZ

BUILDING LAYOUT



LEGEND

- | | | | |
|------------|-----------------------|----------------|------------------------|
| EXIT SIGN | ILLUMINATED EXIT SIGN | FIRST AID | FIRE EXTINGUISHER |
| CALL POINT | ALARM PANEL | FIRE HOSE REEL | MECHANICAL VENTILATION |

GROUND FLOOR
16 PERRY STREET, MASTERTON