

Maitland, 1/416 High Street

ONE OF A KIND STUNNING BUILDING!

The Hills Chambers Building has been a wonderful home for quality tenants over the years and now comes your opportunity to move into this sensational space - and for the right individual or company, we're happy to consider incentives to suit!

The architecturally designed and constructed interior (circa 190sqm) is a fitting outcome for such a grand building. The building was originally built in 1907 and completely modified and refurbished inside in 2010 by Mark Dawson providing to reflect what it is today.

Home to Newcastle Music Academy for many years (who added their own touches of brilliance) and in later times, Metier Medical as their Head Office, the space provides ample room and great facilities for multiple employees or groups.

Available now for the first time in more than a decade, we are seeking a professional tenant or group who will love The Hills Chambers as much as we do.

For Lease

\$40K PA + Outs

Building Area

190sqm

Contact

Todd Fisher

0438 592 920

tfisher.maitland@ljhooker.com.au

Ben Cotton

0434 638 822

bcotton.maitland@ljhooker.com.au



LJ Hooker Maitland
(02) 4933 5511

Disclaimer: All information contained therein is gathered from relevant third parties sources. We cannot guarantee or give any warranty about the information provided. Interested parties must rely solely on their own enquiries.

Note: Some previous images used

More About this Property

Property ID	1DJXF6H
Property Type	Offices
Building Area	190 m2

Todd Fisher 0438 592 920

Principal/Licensee in Charge | tfisher.maitland@ljhooker.com.au

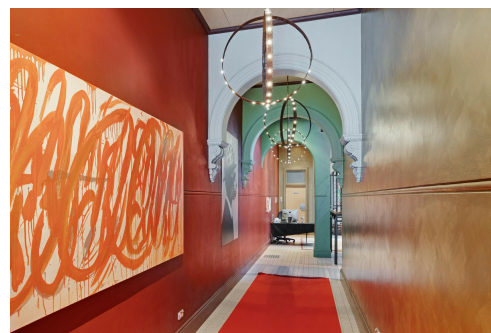
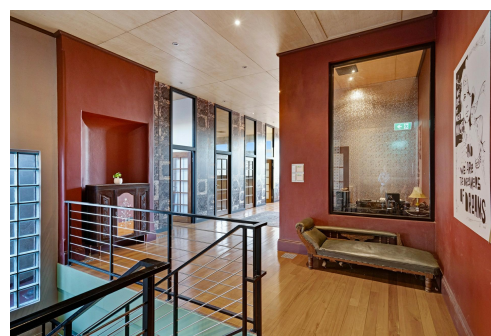
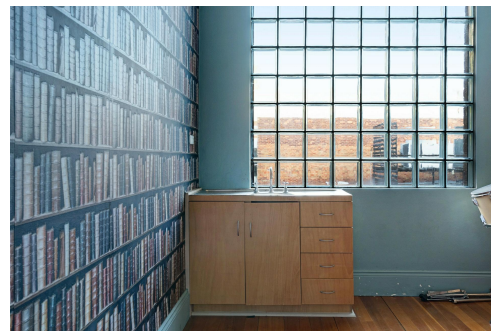
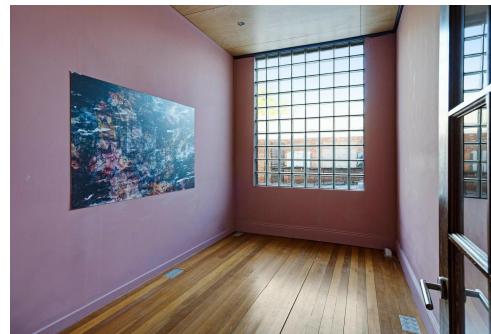
Ben Cotton 0434 638 822

Licensed Real Estate Agent & Auctioneer | bcotton.maitland@ljhooker.com.au

LJ Hooker Maitland (02) 4933 5511

24 Ken Tubman Drive, MAITLAND NSW 2320

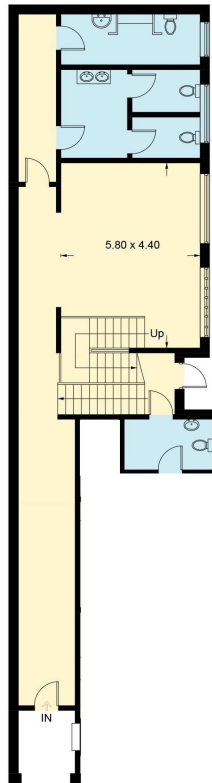
maitland.ljhooker.com.au | maitland@ljhooker.com.au



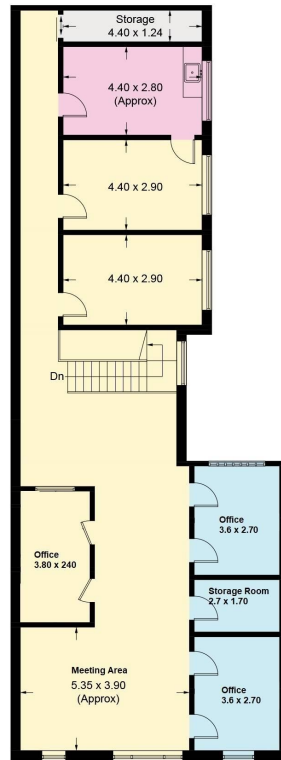
LJ Hooker Maitland
(02) 4933 5511

Disclaimer: All information contained therein is gathered from relevant third parties sources.
We cannot guarantee or give any warranty about the information provided. Interested parties must rely solely on their own enquiries.

416, High Street, Maitland



Ground Floor



First Floor

Illustration for identification purposes only, measurements are approximate, not to scale. floorplansUsketch.com © (ID590600)