



Lithgow, 155 Main Street

Prime CBD Health Care Space with Attached Studio

A prominent central CBD position for this thoroughly renovated double brick premises, ideal for use as health care, medical or dental surgery. There is a current approval in place for orthodontic and dental use.

The property offers the additional advantage of an attached modern one-bedroom apartment with off street parking at the rear.

High exposure location with solid retail and professional office buildings adjacent and opposite. A Woolworths supermarket and BWS is located immediately to the rear of the property. A fantastic opportunity for an owner occupier or astute investor.

For Sale
Contact Agent

Building Area
420sqm

Contact
Jamie Giokaris
0418 201 028
jgiokaris@ljhlithgow.com.au



Disclaimer: All information contained therein is gathered from relevant third parties sources. We cannot guarantee or give any warranty about the information provided. Interested parties must rely solely on their own enquiries.

LJ Hooker Lithgow
(02) 6351 2548

More About this Property

Property ID	1AV9F9X
Property Type	Medical/Consulting
Building Area	420 m ²
Land Area	475 m ²

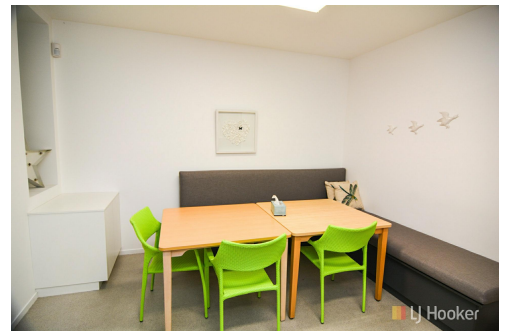
Jamie Giokaris 0418 201 028

Principal & Licensee | jgiokaris@ljhlithgow.com.au

LJ Hooker Lithgow (02) 6351 2548

201 Main Street, LITHGOW NSW 2790

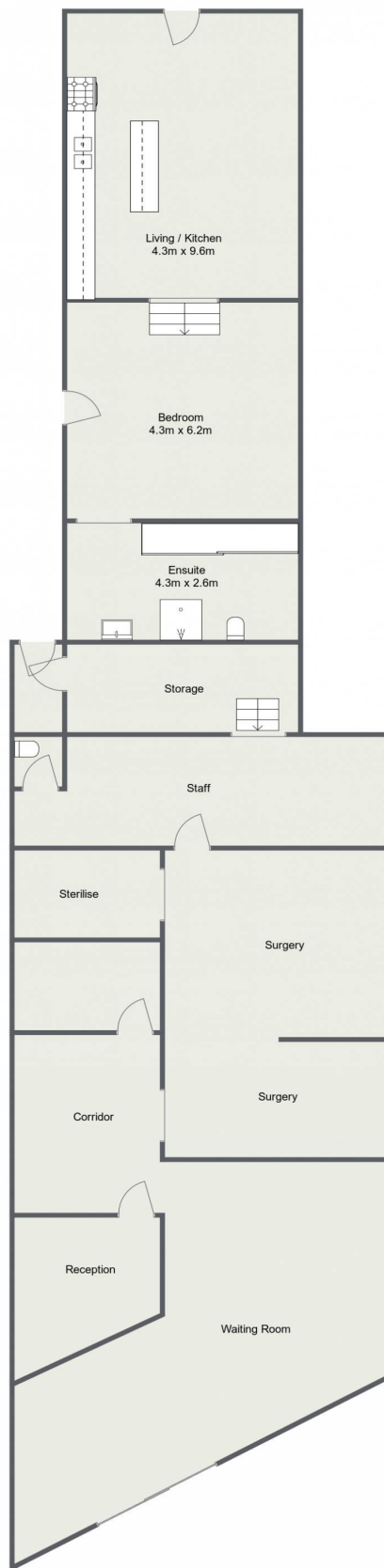
lithgow.ljhooker.com.au | enquiries@ljhlithgow.com.au



Disclaimer: All information contained therein is gathered from relevant third parties sources. We cannot guarantee or give any warranty about the information provided. Interested parties must rely solely on their own enquiries.

LJ Hooker Lithgow
(02) 6351 2548

155 Main Street, Lithgow



Please Note: The above dimensions are approximate and are intended to be used as a guide only. Interested parties are urged to rely on their own enquiries.