



15B King William Street, Kent Town

## Perfect City Fringe Office in Kent Town

Position your business for success in this stylish and functional ground floor office suite of approximately 92sqm\*, perfectly located on the city fringe just minutes from the Adelaide CBD.

The layout offers flexibility and comfort, featuring:

- Open-plan workspace
- Private office/meeting room
- Kitchenette and private bathroom facilities
- Balcony with sliding glass doors for natural light and fresh air
- Secure rear access to on-site parking

Don't miss this opportunity to secure premium office accommodation in highly sought-after Kent Town.

For further information or to book an inspection please contact Rino Pancione on 0417 822 987 or Brooke Stead on 0404 226 919.

- Approximately

RLA 231015

**FOR LEASE**  
Contact Agent

**BUILDING AREA**  
92sqm

### AGENTS

Rino Pancione  
0417 822 987  
rino.pancione@ljhcommercialadelaide.com.au

Brooke Stead  
0404 226 919  
brooke.stead@ljhcommercialadelaide.com.au

### AGENCY

Adelaide  
(08) 8232 8844

All information contained therein is gathered from relevant third parties sources. We cannot guarantee or give any warranty about the information provided. Interested parties must rely solely on their own enquiries.

**LJ Hooker Commercial**

## MORE DETAILS

Property ID	8FWH94
Property Type	Offices Medical/Consulting Other
Building Area	92 m2
Parking	1

### Rino Pancione 0417 822 987

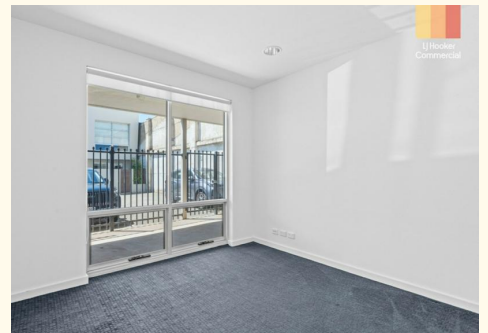
Principal | [rino.pancione@ljhcommercialadelaide.com.au](mailto:rino.pancione@ljhcommercialadelaide.com.au)

### Brooke Stead 0404 226 919

Commercial Sales & Leasing |  
[brooke.stead@ljhcommercialadelaide.com.au](mailto:brooke.stead@ljhcommercialadelaide.com.au)

### Adelaide (08) 8232 8844

81 Flinders Street, ADELAIDE SA 5000  
[adelaide.ljhcommercial.com.au](http://adelaide.ljhcommercial.com.au) |  
[commercialadelaide@ljhcommercialadelaide.com.au](mailto:commercialadelaide@ljhcommercialadelaide.com.au)



All information contained therein is gathered from relevant third parties sources.  
We cannot guarantee or give any warranty about the information provided.  
Interested parties must rely solely on their own enquiries.



 Total Lettable Area - 71m<sup>2</sup>

 Verandah - 21m<sup>2</sup>

Measurements are approximate



 **LJ Hooker Commercial**  
Adelaide

**15b King William Street, Kent Town, SA 5067**

**Disclaimer:** The information & figures obtained within this document has been compiled from information provided by vendor & sources that we believe are reliable. No warranty is given to their accuracy & all figures are subject to change without notice.