



Gawler, Shop 6/5-9 Murray Street

Murray Street Opportunity

LJ Hooker Commercial Adelaide are proud to present to the market for lease, Shop 6/5-9 Murray Street, Gawler.

Situated within Murray Plaza, offering main street exposure and excellent signage and branding opportunities.

Murray Street is the main commercial and retail hub of Gawler, South Australia's largest regional town. As the town's primary thoroughfare, Murray Street features a mix of heritage architecture and modern developments.

The precinct is home to a diverse range of businesses, including national retailers, independent boutiques, cafés, restaurants, professional services, and essential amenities such as banks and medical centres. Major shopping destinations along Murray Street include Gawler Central Shopping Centre and the Coles-anchored Gawler Park

For Lease
Please Call

Building Area
105sqm

Contact
Rino Pancione
0417 822 987
rino.pancione@ljhcommercialadelaide.com.au

Mark Tettis
0433 139 892
mark.tettis@ljhcommercialadelaide.com.au



Adelaide
(08) 8232 8844

Disclaimer: All information contained therein is gathered from relevant third parties sources. We cannot guarantee or give any warranty about the information provided. Interested parties must rely solely on their own enquiries.

Homemaker Centre. The street also serves as a gateway to the Barossa Valley, benefiting from strong passing trade and tourism traffic.

Key Features Include:

- 104.6 sqm lettable area
- Main Street exposure
- Flexible leasing terms
- Complimentary Tenancy mix
- Shared on-site customer parking
- Internal amenities
- Located across from the Gawler Medical Clinic
- Zoned Township Main Street

*Approximately

To arrange an inspection please do not hesitate to contact Rino Pancione or Mark Tettis.

** All information provided has been obtained from sources we believe to be accurate, however, we cannot guarantee the information is accurate and we accept no liability for any errors or omissions (including but not limited to a property's land size, floor plans and size, building age and condition). Interested parties should make their own enquiries and obtain their own legal advice.

RLA 231 015

More About this Property

Property ID	8CMH94
Property Type	Retail
Building Area	104.6 m2

Rino Pancione 0417 822 987

Principal | rino.pancione@ljhcommercialadelaide.com.au

Mark Tettis 0433 139 892

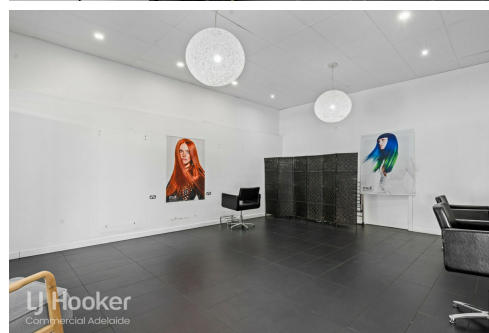
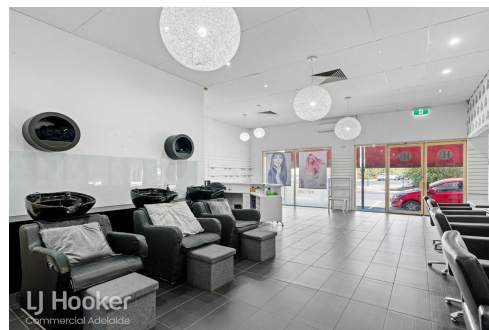
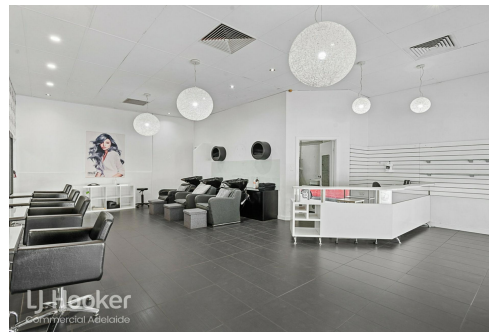
Sales & Leasing - Commercial | mark.tettis@ljhcommercialadelaide.com.au

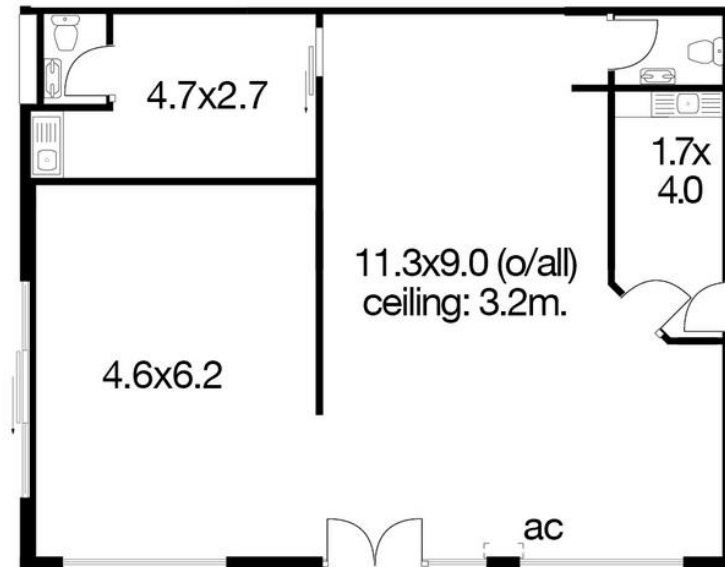
Adelaide (08) 8232 8844

81 Flinders Street, ADELAIDE SA 5000

adelaide.ljhcommercial.com.au |

commercialadelaide@ljhcommercialadelaide.com.au





Tenancy 6, 5-9 Murray Street, Gawler

Area 104.6sqm

LJ Hooker
Commercial
Adelaide

LJ Hooker Commercial

Adelaide
(08) 8232 8844

Disclaimer: All information contained therein is gathered from relevant third parties sources.
We cannot guarantee or give any warranty about the information provided. Interested parties must rely solely on their own enquiries.