

## Edgeworth, 2/7 Aluminium Close

### Industrial Shed with Office

Nestled within a bustling industrial area

This Fantastic 229m2 property offers

- High Roller door access to unit
- Amenities
- Security system
- Mezzanine Office area with kitchenette
- Carparking Available

#### For Lease

\$35,000+GST pa

#### Building Area

229sqm

#### Contact

**Paul Campbell**

0417 678 593

pcampbell.admiral@ljh.com.au



**LJ Hooker Warners Bay**  
(02) 4915 3800

**Disclaimer:** All information contained therein is gathered from relevant third parties sources. We cannot guarantee or give any warranty about the information provided. Interested parties must rely solely on their own enquiries.

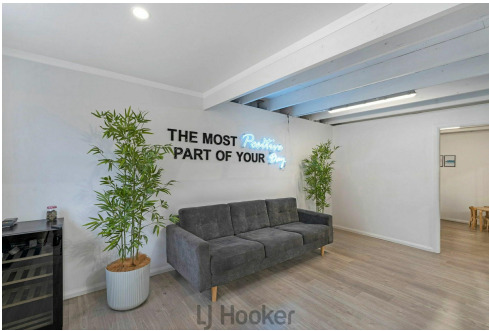
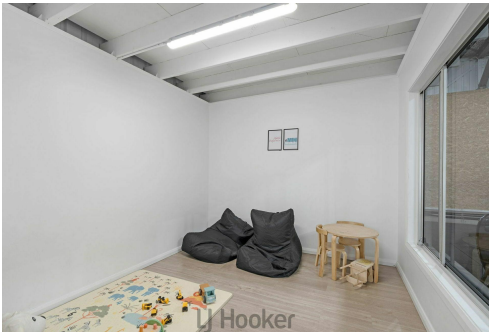
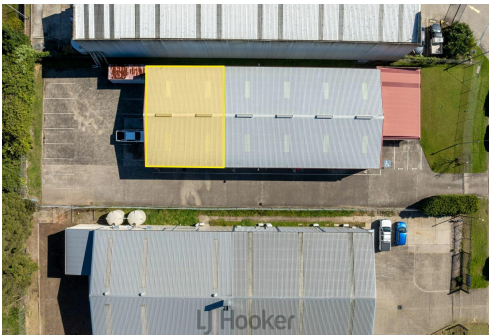


# More About this Property

Property ID	YGFHN8
Property Type	Other
Building Area	229 m2

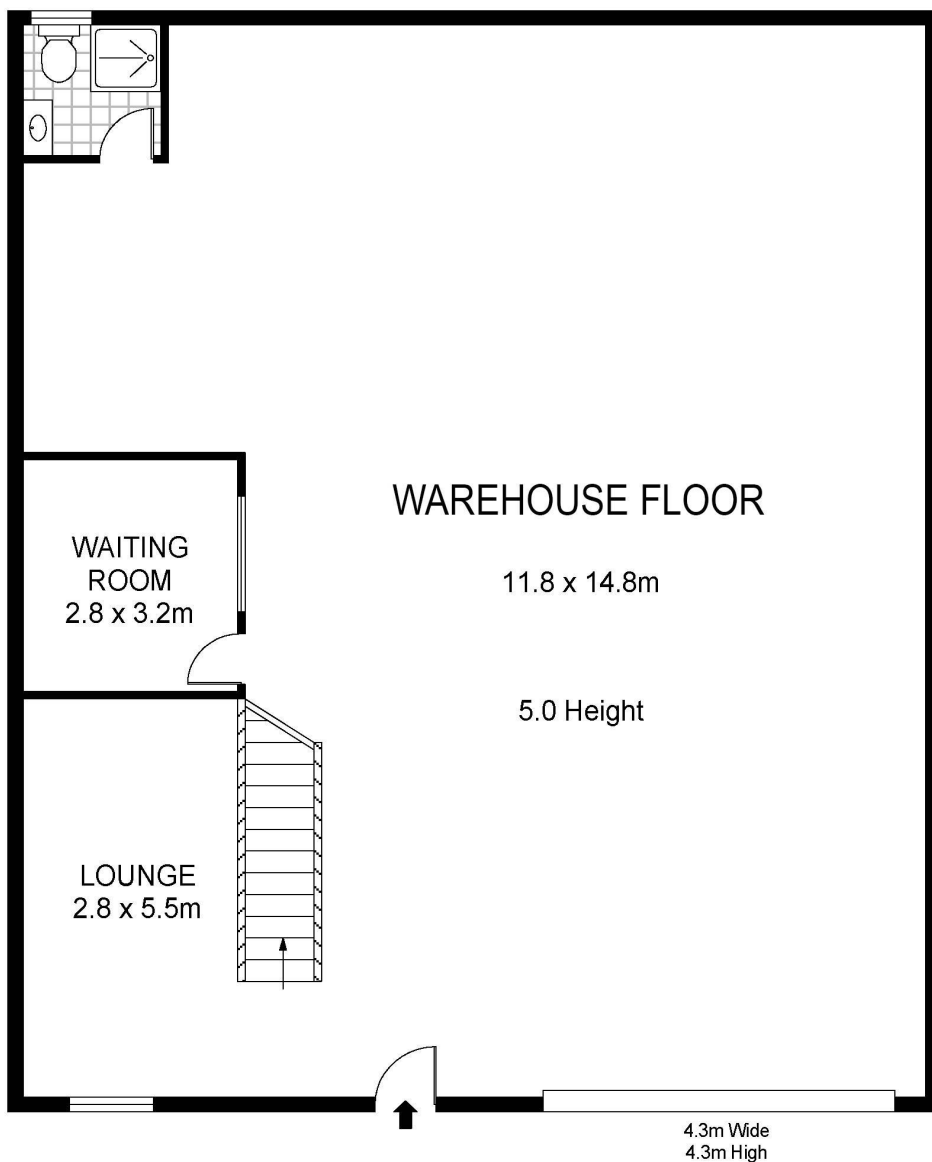
**Paul Campbell 0417 678 593**  
Chairman of the Board | [pcampbell.admiral@ljh.com.au](mailto:pcampbell.admiral@ljh.com.au)

**LJ Hooker Warners Bay (02) 4915 3800**  
Shop 12, 240-260 Hillsborough Rd, WARNERS BAY NSW 2282  
[warnersbay.ljhooker.com.au](http://warnersbay.ljhooker.com.au) | [warnersbay@ljhooker.com.au](mailto:warnersbay@ljhooker.com.au)



**Disclaimer:** All information contained therein is gathered from relevant third parties sources.  
We cannot guarantee or give any warranty about the information provided. Interested parties must rely solely on their own enquiries.

**LJ Hooker Warners Bay**  
**(02) 4915 3800**

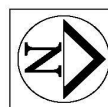


2/7 Aluminium Close  
Edgeworth



Total Internal Floor Area: 229 sqm

Scale in metres. Indicative only. Dimensions are approximate. All information contained herein is gathered from sources we believe to be reliable. However we cannot guarantee its accuracy and interested persons should rely on their own enquiries



**LJ Hooker Warners Bay**  
(02) 4915 3800

**Disclaimer:** All information contained therein is gathered from relevant third parties sources.  
We cannot guarantee or give any warranty about the information provided. Interested parties must rely solely on their own enquiries.