

Deakin, Equinox 2 - Ground Floor/70 Kent Street

Ground Floor Tenancy Available in Contemporary Office Development

Equinox 2 is one of four contemporary buildings, constructed in Equinox Business Park and is situated at 70 Kent Street in the heart of West Deakin office and commercial precinct.

This building occupies a prime position in Equinox Business Park ensuring tenants have plenty of exposure within the business park as well as having convenient access to Woden Town Centre and Canberra's CBD from the building. In addition, tenants can avail themselves of the convenience of basement and on-site parking facilities and indulge themselves in the advantages of a top-notch cafe; and bakery conveniently located within the business park.

Equinox Business Park presents an excellent opportunity for businesses seeking an



Disclaimer: All information contained therein is gathered from relevant third parties sources. We cannot guarantee or give any warranty about the information provided. Interested parties must rely solely on their own enquiries.

For Lease
Contact Agent

Building Area
158sqm

Contact
Greg Lyons
0439 338 883
glyons@ljhccanberra.com.au

David Cook
0481 051 212
dcook@ljhccanberra.com.au

Canberra
02) 6247 0222

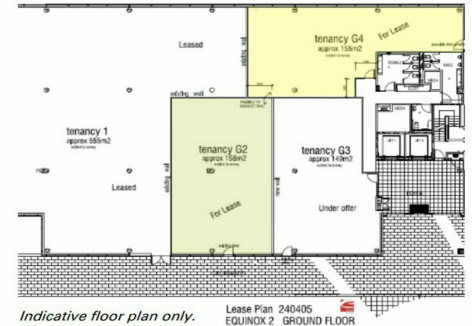
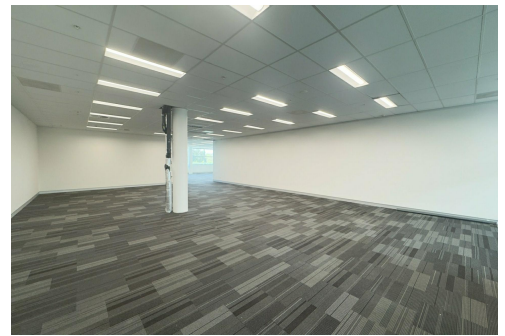
attractive and functional workspace.

The following areas are currently available for lease in Equinox 2 and can be taken as one whole tenancy of approximately 315 sqm or subdivided to offer:

Ground floor tenancy G2: 158 sqm

Ground floor tenancy G4: 155 sqm.

For more information, please contact David Cook on 0481 051 212 or Greg Lyons on 0438 338 883 today.



More About this Property

Property ID	47KHXW
Property Type	Offices
Building Area	158 m2

Greg Lyons 0439 338 883

Franchise Owner, Managing Director | glyons@ljhccanberra.com.au

David Cook 0481 051 212

Commercial Property Manager | dcook@ljhccanberra.com.au

Canberra 02) 6247 0222

36 Woolley Street, DICKSON ACT 2602

canberra.ljhcommercial.com.au | glyons@ljhccanberra.com.au