



Darwin City, Level 3/75 Woods Street

CBD 3rd Floor Tenancy

Now leasing at \$360m2 PA + GST + Outgoings. Top floor quality office spaces with great view and attractive rent. Tenancies of 109m2 and 203m2 available.

You get the best of both worlds with these affordable options - found on the fringe of the Darwin CBD opposite parkland and only about 300m from the Post office. Each self-contained tenancy comes complete with fitout and is cooled with independent air-conditioning. Tenancies feature own amenities, ample parking and disabled access.

*Fit-out included.

*Darwin CBD.

*Close to Post Office.

*Self-contained spaces.

*Ample parking.

*Disabled Access.

*Independent air-conditioning

*Separate staff and customer toilets.

For Lease

\$360m2 PA + GST + Outgoings

Building Area

312sqm

Contact

Brendan Dunn

0418 898 855

bdunn@ljhcd.com.au

John Grant

0429 982 540

jgrant@ljhc.com.au



North NT

(08) 8924 0977

Disclaimer: All information contained therein is gathered from relevant third parties sources. We cannot guarantee or give any warranty about the information provided. Interested parties must rely solely on their own enquiries.

For further information or to arrange an inspection, please contact the Agent or Email:
darwin@ljhc.com.au

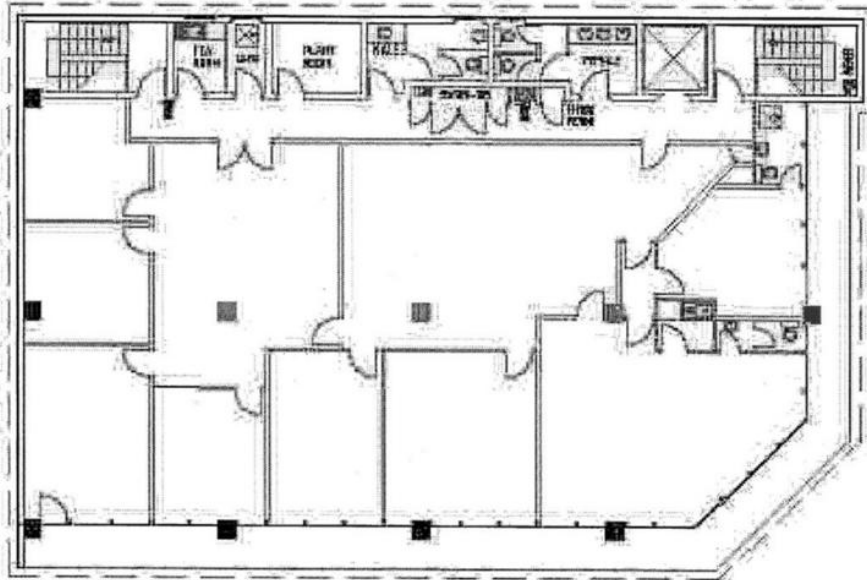
More About this Property

Property ID	V6RGWU
Property Type	Offices
Building Area	312 m ²

Brendan Dunn 0418 898 855
General Manager | bdunn@ljhcd.com.au
John Grant 0429 982 540
Commercial Sales Consultant | jgrant@ljhc.com.au

North NT (08) 8924 0977
Suite 1/25 Parap Road, PARAP NT 0820
northnt.ljhcommercial.com.au | reception@ljhookerdarwin.com.au





A number line from 0 to 5 with a box labeled m^2 above the segment from 0 to 1. The text "SCALE IN METRES" is written above the line.

WINLOW HOUSE
BUILDING PLANS
THIRD FLOOR



Disclaimer: All information contained therein is gathered from relevant third parties sources. We cannot guarantee or give any warranty about the information provided. Interested parties must rely solely on their own enquiries.