



Crows Nest, 2/21 Willoughby Road

Perfect Location at the top of Willoughby Road

Vacant for the first time in more than 40 Years, this prime office space is close to everything!

With 50 Sqm partitioned over 3 rooms, this space is well suited to medical, or consulting having been a dental surgery in the past.

Features:

- Parking at rear
- 100 Meters to Bus Terminus
- 400 Meters to Metro
- Countless eateries at your door step
- Woolworths 100 Meters away
- Customer parking within 100 Meters

For Lease

First Floor Office - Prime Location

Building Area

50sqm

Contact

Stewart Kirkby

0418 672 566

skirkby@ljhookerlanecove.com



Disclaimer: All information contained therein is gathered from relevant third parties sources.

We cannot guarantee or give any warranty about the information provided. Interested parties must rely solely on their own enquiries.

LJ Hooker Lane Cove
(02) 9428 1877

More About this Property

Property ID	20Y1F6A
Property Type	Offices
Building Area	50 m2

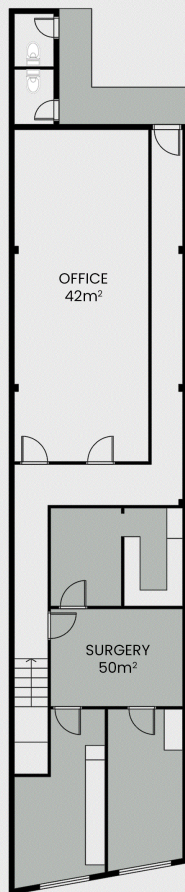
Stewart Kirkby 0418 672 566
Licensee & Principal | skirkby@ljhookerlanecove.com

LJ Hooker Lane Cove (02) 9428 1877
113 Longueville Road, LANE COVE NSW 2066
lanecove.ljhooker.com.au | lanecove@ljhlc.com.au



LJ Hooker Lane Cove
(02) 9428 1877

Disclaimer: All information contained therein is gathered from relevant third parties sources.
We cannot guarantee or give any warranty about the information provided. Interested parties must rely solely on their own enquiries.



RETAIL SPACE 110m²
COMMERCIAL SPACE 92m²



LJ Hooker Lane Cove
(02) 9428 1877

Disclaimer: All information contained therein is gathered from relevant third parties sources.
We cannot guarantee or give any warranty about the information provided. Interested parties must rely solely on their own enquiries.