

2/376 Princes Highway, Corrimal

## High-Exposure Corner Site

- \*Only Showroom for Lease at this stage.

Prominent Princes Highway position with constant passing traffic and standout signage opportunity. Ideal for showroom or light workshop use, capturing strong local trade with easy customer access and convenience.

- Corner exposure on one of Corrimal's busiest thoroughfares
- Broad window frontage for display and branding
- Sealed flooring; practical, easy-care presentation
- Plentiful street parking at the door
- Short walk to town centre amenities and public transport
- Flexible lease terms
- Available now, inspections by appointment

### FOR LEASE

\$2,600 per month (GST exclusive)

### BUILDING AREA

70sqm

### AGENTS

Chris Tudzarov

0451 714 441

[chris.tudzarov@ljhwollongong.com.au](mailto:chris.tudzarov@ljhwollongong.com.au)

Con Papadopoulos

0408 604 040

[con.papadopoulos@ljhwollongong.com.au](mailto:con.papadopoulos@ljhwollongong.com.au)

### AGENCY

LJ Hooker Wollongong | Corrimal |

Shellharbour

(02) 4229 8600

All information contained therein is gathered from relevant third parties sources. We cannot guarantee or give any warranty about the information provided. Interested parties must rely solely on their own enquiries.



## MORE DETAILS

Property ID	VGPHQZ
Property Type	Retail Showrooms/Bulky Goods
Building Area	70 m2

### **Chris Tudzarov 0451 714 441**

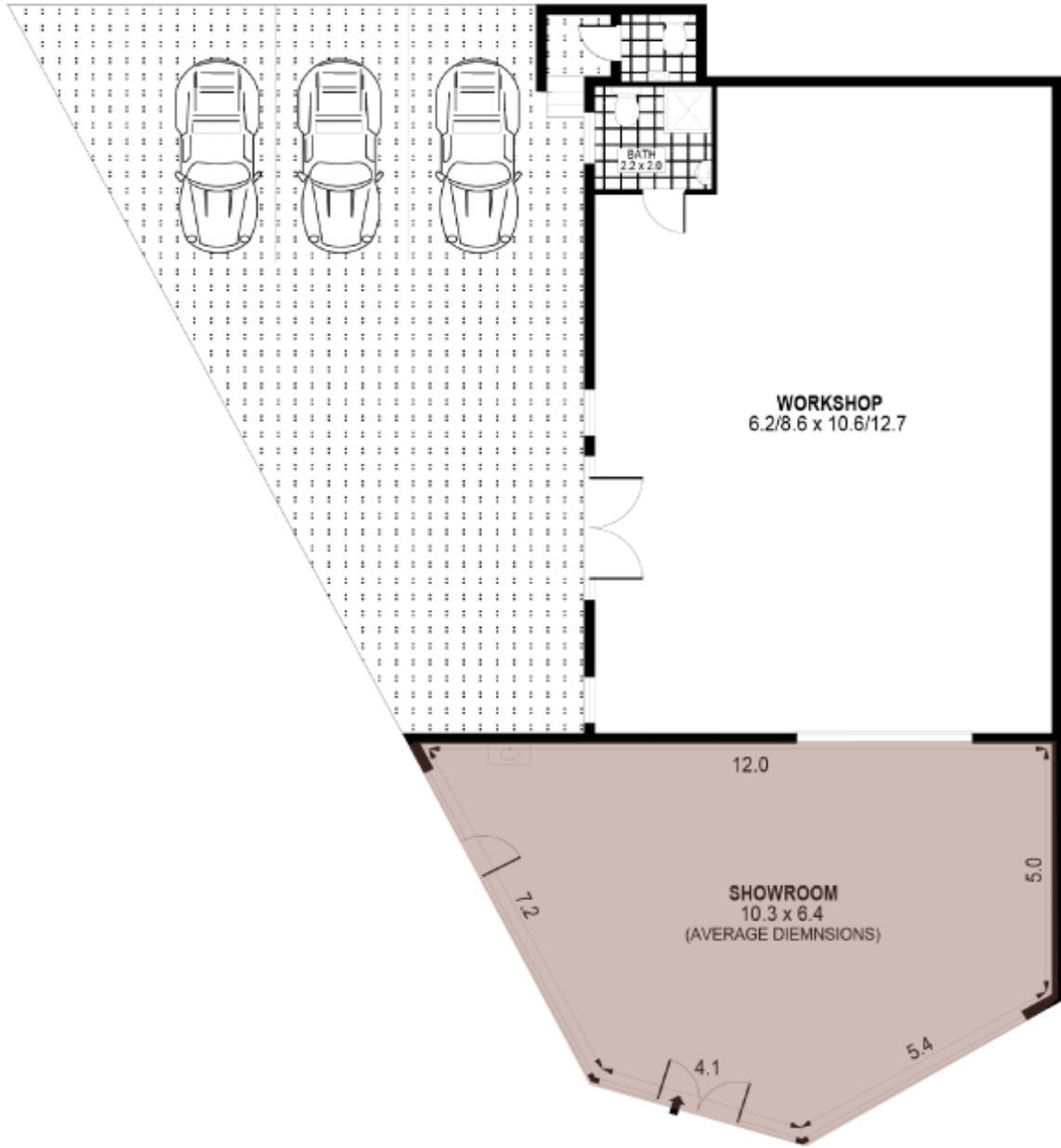
Commercial Sales & Leasing | [chris.tudzarov@ljhwollongong.com.au](mailto:chris.tudzarov@ljhwollongong.com.au)

### **Con Papadopoulos 0408 604 040**

Commercial Property Manager |  
[con.papadopoulos@ljhwollongong.com.au](mailto:con.papadopoulos@ljhwollongong.com.au)

### **LJ Hooker Wollongong | Corrimal | Shellharbour (02) 4229 8600**

69 Kembla Street, WOLLONGONG NSW 2500  
[wollongong.ljhooker.com.au](http://wollongong.ljhooker.com.au) | [wollongong@ljhooker.com.au](mailto:wollongong@ljhooker.com.au)



SCALE (METRES)



SHOWROOM : 69m<sup>2</sup>  
WORKSHOP : 108m<sup>2</sup>

PLANS SHOWN ONLY INDICATIVE OF LAYOUT. DIMENSIONS ARE APPROXIMATE.  
Ref. No: 07649

376 PRINCES HIGHWAY

CORRIMAL

All information contained therein is gathered from relevant third parties sources.  
We cannot guarantee or give any warranty about the information provided.  
Interested parties must rely solely on their own enquiries.

