

Coffs Harbour, Shop 105/92-98 Harbour Drive

HIGH PROFILE SHOP OPPOSITE COFFS CENTRAL - 51M2

Shop 105 comprises a prime retail premises which an approximate gross leasable area of 51m2.

Shop 105 occupies a prime position fronting popular Harbour Drive, Coffs Harbour's premier retail strip and features an as new fit out.

Situated within the Landmark building known as "The Vault", it occupies one of the best positions in Harbour Drive and is on the sunny side of the street!

Shop 105 features a floor to ceiling glazed shop front from the footpath to the extra high ceiling.

For Lease
\$39,500 + GST

Building Area
51sqm

Contact
Deb Grimley
0434 301 550
dgrimley@ljhcoffs.com



Coffs Harbour
(02) 6651 6711

Disclaimer: All information contained therein is gathered from relevant third parties sources. We cannot guarantee or give any warranty about the information provided. Interested parties must rely solely on their own enquiries.

A quality operator is being sought to take advantage of the fabulous location to compliment existing tenants including Coffs Newsagency, The Flight centre Group and Westlawn Finance to name a few.

All day multi-level car parking is situated directly across the street at the rear of Coffs Central and the nearby Woolworths car park.

Shop 105 enjoys the following features:

- Prime retail position
- Popular busy location
- High profile
- Heavy pedestrian and vehicular traffic flows
- New fit out
- Affordable rental

The gross annual asking rental of \$39,500 excluding GST, equates to \$774/m2.

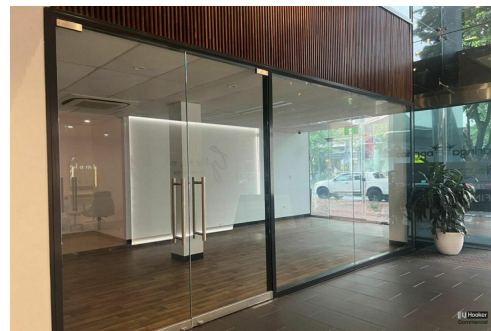
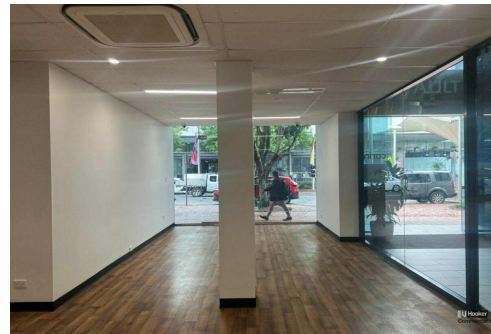
For all further details including available lease terms and conditions, leasing incentives, leasing packages, building plans etc. please contact one of LJ Hooker Commercial's Retail Leasing Specialists today:

Deb Grimley 0434 301 550 dgrimley@ljhcoffs.com

Troy Mitchell 0417 695 915 tmitchell@ljhcoffs.com

LJ Hooker Commercial Coffs Harbour office (02) 6651 6711 coffsharbour@ljhc.com.au

The leading specialist commercial agency servicing The Coffs Coast.



More About this Property

Property ID	N2FGVG
Property Type	Retail
Building Area	51 m ²

Deb Grimley 0434 301 550

Manager, Leasing | dgrimley@ljhcoffs.com

Coffs Harbour (02) 6651 6711

40 Harbour Drive, COFFS HARBOUR NSW 2450
coffsharbour.ljhcommercial.com.au | coffsharbour@ljhcoffs.com