

Campbelltown, Suite G.06/1 Centennial Drive

Professional suite in the popular VUE building

Conveniently located in Park Central within close proximity to Campbelltown Private and Public Hospitals and only metres from Macarthur train station and shopping centre.

VUE is serviced by a commercial lift with beautifully appointed foyers, lift lobbies and amenities. Optimum security includes 24 hour access control to building entries, lifts and car park via proximity card reader, CCTV car-park monitoring and intercom access for visitors.

The suite features;

- Reception/ Waiting area

 **LJ Hooker Commercial**

Disclaimer: All information contained therein is gathered from relevant third parties sources. We cannot guarantee or give any warranty about the information provided. Interested parties must rely solely on their own enquiries.

For Lease

Contact Agent

Building Area

67sqm

Contact

Cooper Meehan

0449 904 453

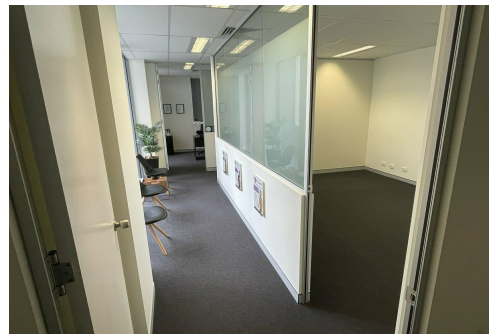
cooper.meehan@ljhooker.com.au

Macarthur

(02) 4620 6111

- Multiple consultation rooms
- Natural light
- Kitchenette
- Ducted air-conditioning

For further information or to arrange an inspection do not hesitate to contact Cooper Meehan on 0449 904 453.



More About this Property

Property ID	HHGGVV
Property Type	Offices
Building Area	67 m ²

Cooper Meehan 0449 904 453

Associate Director - Sales & Leasing | cooper.meehan@ljhooker.com.au

Macarthur (02) 4620 6111

Suite 5.02, 171-179 Queen Street, CAMPBELLTOWN NSW 2560
macarthur.ljhcommercial.com.au | macarthur@ljhooker.com.au