

11/641 Stuart Highway, Berrimah

## Compact & Modern in Berrimah Business Centre

641 Stuart Highway, "Berrimah Business Centre", is located in Berrimah Business Park, which is ideally located in the heart of the greater Darwin area, midway between the Darwin and Palmerston Central Business Districts. A key junction for the greater Darwin area, it has a very high volume of passing traffic each day and is surrounded by a large number of established businesses.

"Berrimah Business Centre", is a modern commercial complex that enjoys frontage to the Stuart Highway. The complex includes a central driveway which provides through access to Miles Road at the rear of the complex. The complex has a good cross section of professional occupants including medical services and professional services.

Unit 11 is a corner unit which has windows on two sides, high ceilings and great natural light. The tenancy has a modern, simple fitout and is entirely air conditioned with a ducted system.

Tenancy is available now, advertised Rent is for a 3 + 3 year Lease Term.

For more information or to arrange an inspection, contact Lee Doyle

### FOR LEASE

\$2,585 per month + GST + Outgoings

### BUILDING AREA

79sqm

### AGENTS

Lee Doyle  
0403 348 243  
ldoyle@ljhnc.com.au

Suvi Joutsalainen  
0439 622 884  
commercial1@ljhnc.com.au

### AGENCY

North NT  
(08) 8924 0977

All information contained therein is gathered from relevant third parties sources. We cannot guarantee or give any warranty about the information provided. Interested parties must rely solely on their own enquiries.

 **LJ Hooker Commercial**

on 0403 348 243 or Ryan Doyle on 0405 192 389.

## MORE DETAILS

Property ID	WBGWU
Property Type	Offices
Building Area	79 m2
Outgoings	\$6,251.00
Parking	2

### Lee Doyle 0403 348 243

Director | Commercial Sales & Leasing | [ldoyle@ljhnc.com.au](mailto:ldoyle@ljhnc.com.au)

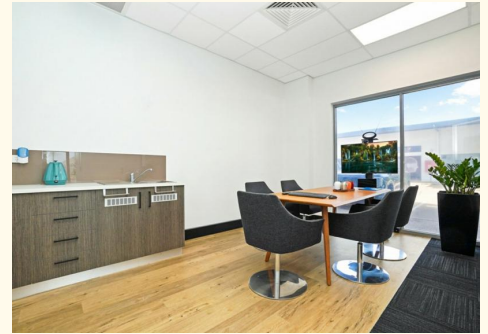
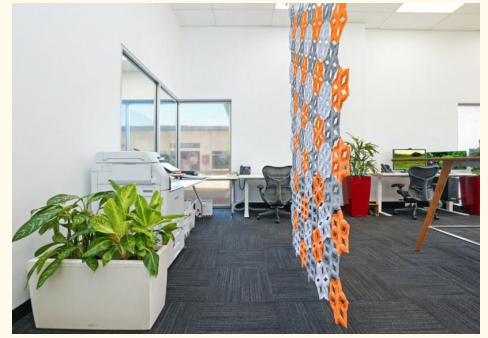
### Suvi Joutsalainen 0439 622 884

Senior Commercial Property Investment Management | [commercial1@ljhnc.com.au](mailto:commercial1@ljhnc.com.au)

### North NT (08) 8924 0977

Suite 1/25 Parap Road, PARAP NT 0820

[northnt.ljhcommercial.com.au](http://northnt.ljhcommercial.com.au) | [reception@ljhookerdarwin.com.au](mailto:reception@ljhookerdarwin.com.au)



All information contained therein is gathered from relevant third parties sources.  
We cannot guarantee or give any warranty about the information provided.  
Interested parties must rely solely on their own enquiries.