

Shop 5/60 Winnima Way, Berkeley

Perfect Start Up Space.

This bright and fresh commercial space is the perfect fit for a service based business or those looking to secure their first commercial space.

The main area has 66sqm of light filled open space, with modern polished concrete floor. Added to this is a separate office space and kitchenette area.

Maximum flexibility comes from the retail shop front along with rear lane access and off street parking. All adjacent to the Coles supermarket.

Key Features

- Light filled 48 sqm main space with polished concrete floor.
- Space suited to either office space or retail space.
- Large shop front window, with security roller shutter.
- 18 sqm internal consulting or storage room.
- Internal toilet and kitchen facilities.
- Off Street car parking spaces and separate rear lane access.
- Nearby to Berkeley Coles and Northcliffe Drive transport links .

FOR LEASE

\$280 per week + GST

BUILDING AREA

66sqm

AGENTS

Chris Tudzarov

0451 714 441

chris.tudzarov@ljhwollongong.com.au

Con Papadopoulos

0408 604 040

con.papadopoulos@ljhwollongong.com.au

AGENCY

LJ Hooker Wollongong | Corrimal |

Shellharbour

(02) 4229 8600

All information contained therein is gathered from relevant third parties sources.
We cannot guarantee or give any warranty about the information provided.
Interested parties must rely solely on their own enquiries.



MORE DETAILS

Property ID	V6PHQZ
Property Type	Retail Medical/Consulting Offices
Building Area	66 m2

Chris Tudzarov 0451 714 441

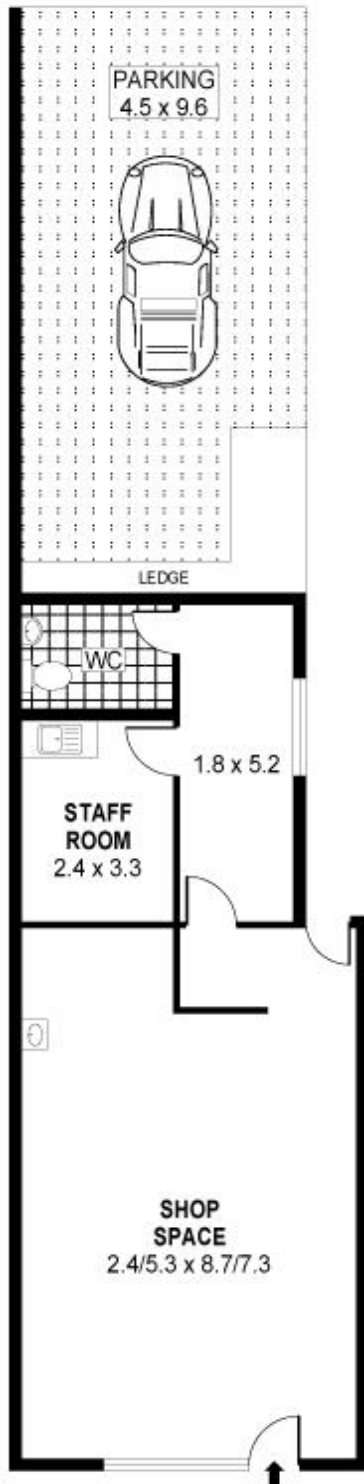
Commercial Sales & Leasing | chris.tudzarov@ljhwollongong.com.au

Con Papadopoulos 0408 604 040

Commercial Property Manager |
con.papadopoulos@ljhwollongong.com.au

LJ Hooker Wollongong | Corrimal | Shellharbour (02) 4229 8600

69 Kembla Street, WOLLONGONG NSW 2500
wollongong.ljhooker.com.au | wollongong@ljhooker.com.au



0 1 2 3 4 5 **SCALE (METRES)**

PLANS SHOWN ONLY INDICATIVE OF LAYOUT. DIMENSIONS ARE APPROXIMATE.
Ref. No: 99815

INT : 69m²
PARKING : 43m²

SHOP 5, BUILDING 1 WINNIMA WAY

BERKELEY