



## Belmore, 741 Canterbury Road

### Retail Shop and Garage, Dual Street Access with High Exposure

A prominent retail shop with total area of approx 114sqm and dual street access, conveniently located on Canterbury Road near the main shopping strip on busy Burwood Road and opposite Belmore South Public School. Providing excellent exposure with a high level of vehicle and pedestrian activity and suitable for a variety of uses, this premises is set among other long term businesses and within close proximity to all of Belmore's amenities.

- Retail Shop 82sqm approx, frontage on Canterbury Road
- Garage/workshop 32sqm approx, rear access from Wilson Lane
- Kitchenette, high ceilings
- Flexible lease terms
- Available from 30th July 2025

#### For Lease

\$650 per week plus GST

#### Building Area

114sqm

#### Contact

**Muhammad Sarmini**

0403 750 917

[muhammad@ljhbl.com.au](mailto:muhammad@ljhbl.com.au)



**LJ Hooker Belmore**  
(02) 9750 9244

**Disclaimer:** All information contained therein is gathered from relevant third parties sources. We cannot guarantee or give any warranty about the information provided. Interested parties must rely solely on their own enquiries.

Contact: Muhammad Sarmini on 0403 750 917 or 9750 9244

For Lease: \$650 per week plus GST

Email: [muhammad@ljhbl.com.au](mailto:muhammad@ljhbl.com.au)

## More About this Property

Property ID	8DFHRQ
Property Type	Retail
Building Area	114 m2

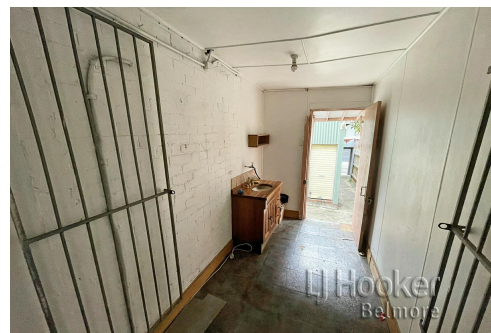
### Muhammad Sarmini 0403 750 917

Director | Selling Licensee-in-Charge | [muhammad@ljhbl.com.au](mailto:muhammad@ljhbl.com.au)

### LJ Hooker Belmore (02) 9750 9244

435-437 Burwood Road, BELMORE NSW 2192

[belmore.ljhooker.com.au](http://belmore.ljhooker.com.au) | [info@ljhbl.com.au](mailto:info@ljhbl.com.au)



**Disclaimer:** All information contained therein is gathered from relevant third parties sources. We cannot guarantee or give any warranty about the information provided. Interested parties must rely solely on their own enquiries.

**LJ Hooker Belmore**  
**(02) 9750 9244**