

Alice Springs, 11/16 Hartley Street

Ideal Office Space in the Heart of the CBD

- 337 square metres
- Wheel chair access
- Underground parking
- Onsite kitchenette
- Recently renovated
- Air-conditioned throughout

Available now!

For Lease

\$9,425.00/MTH+GST+OG

Building Area

377sqm

Contact

Jane Linsley

0418 791 015

jlinsley@ljhalicesprings.com.au



LJ Hooker Alice Springs
(08) 8950 6333

Disclaimer: All information contained therein is gathered from relevant third parties sources. We cannot guarantee or give any warranty about the information provided. Interested parties must rely solely on their own enquiries.

More About this Property

Property ID V2GFD5

Property Type Offices

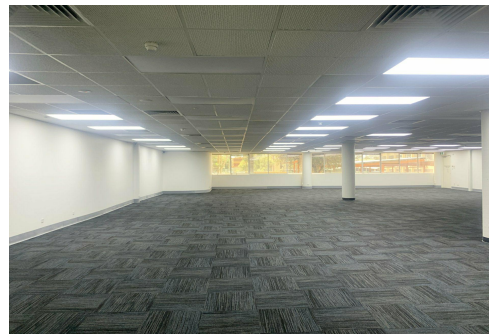
Building Area 377 m²

Jane Linsley 0418 791 015

Commercial Investment | Property manager Residential Investment |
Department Ma | jlinsley@ljhalicesprings.com.au

LJ Hooker Alice Springs (08) 8950 6333

Suite 2 52 Hartley Street, ALICE SPRINGS NT 0870
alicesprings.ljhooker.com.au | office@ljhalicesprings.com.au



LJ Hooker Alice Springs
(08) 8950 6333

Disclaimer: All information contained therein is gathered from relevant third parties sources.
We cannot guarantee or give any warranty about the information provided. Interested parties must rely solely on their own enquiries.